

**Statistical Analysis Primary School Sector:
Dungannon and South Tyrone Borough Council Area**

School by school enrolment over past nine years

**Total P1 – P7 Actual Enrolment ex Units at October 2010 Census
Controlled Schools**

DENI		Total P1-P7									
Ref No	School Name	Actual Enrolment ex Units at October Census									
		2002	2003	2004	2005	2006	2007	2008	2009	2010	% Change
501 2659	Clogher Regional Primary	31	28	25	30	24	20	19	17	12	-61.29%
501 2635	Augher Central Primary	42	40	42	33	32	33	37	38	45	7.14%
501 2632	Donaghmore Primary	44	50	45	44	54	52	44	49	49	11.36%
501 2636	Moy Regional Primary	54	50	48	42	36	34	34	39	49	-9.26%
501 2611	Lisferty Primary	53	45	52	47	54	45	52	50	50	-5.66%
501 2719	Newmills Primary	74	63	61	62	65	57	63	58	52	-29.73%
501 2538	Churchill Primary	45	54	58	53	57	54	66	66	56	24.44%
501 2657	Walker Memorial Primary	70	61	66	71	68	69	74	85	82	17.14%
501 2696	Carntall Primary	78	78	83	82	86	86	87	78	84	7.69%
501 6643	Richmond Primary		26	92	87	92	96	93	89	85	-7.61%
501 2621	Aughnacloy Regional Primary	108	109	104	97	95	103	99	105	115	6.48%
501 6195	Killyman Primary	85	85	85	85	89	92	109	116	129	51.76%
501 6088	Fivemiletown Primary	171	169	172	165	167	160	162	170	169	-1.17%
501 6391	Bush Primary	169	170	166	171	169	166	172	175	178	5.33%
501 2720	Dungannon Primary	173	186	161	178	222	211	198	188	184	6.36%
501 2646	Howard Primary	241	238	225	217	201	208	217	234	239	-0.83%
501 2629	Tamnamore Primary	46	43	32	29	28	23				see note*
501 2451	Benburb Primary	32	34	37	35	37	22	11			*see note

*Ballygawley PS and Innishmagh PS amalgamated in January 2004 to become Richmond PS.

*Tamnamore PS closed 31 August 2008 and amalgamated with Killyman PS. * Benburb PS closed 30 June 2009

Other Primary School Sector Provision

DENI		Total P1-P7									
Ref No	School Name	Actual Enrolment ex Units at October Census									
		2002	2003	2004	2005	2006	2007	2008	2009	2010	% Change
503 1080	Clintyclay Primary	37	35	34	30	34	31	30	29	32	-13.51%
503 2736	St Mary's Primary, Fivemiletown	41	38	33	35	36	36	36	39	35	-14.63%
503 2306	St Malachy's Primary, Glencull	52	52	47	40	39	36	34	40	38	-26.92%
503 2727	St Brigid's Primary, Augher	53	45	40	45	44	47	46	42	39	-26.42%
503 6463	St Joseph's Primary, Caledon	41	40	36	36	34	34	32	36	40	-2.44%
503 2592	St Mary's Primary, Lisbuoy	67	67	71	72	68	62	60	49	50	-25.37%
503 2697	St Patrick's Primary, A'adarragh	60	65	61	61	63	61	62	59	60	0.00%
503 2558	Laghey Primary	41	37	44	40	42	49	57	62	62	51.22%
503 2624	St Mac Carten's Convent Primary	84	79	79	83	74	65	66	66	63	-25.00%
503 2729	St John's Primary, Kingisland	102	101	93	87	66	66	72	67	65	-36.27%
503 2714	Aughamullan Primary	50	48	51	54	67	78	85	81	83	66.00%
503 2387	Derrylatinee Primary	88	91	85	86	89	95	96	96	90	2.27%

503 2463	Blessed Patrick O'Loughran	95	90	87	78	83	86	91	94	93	-2.11%
503 6363	St Mary's Primary, Aughnacloy	60	63	66	78	82	88	94	91	93	55.00%
503 2591	Roan Primary	64	67	69	71	74	80	82	87	99	54.69%
503 2735	St Mary's Primary, Ballygawley	94	94	87	88	94	111	108	111	116	23.40%
503 2698	St Brigid's Primary, Mountjoy	125	119	114	114	128	135	129	126	126	0.80%
504 6637	Gaelscoil Ui Neill	84	86	98	103	104	113	126	131	143	70.24%
503 2715	St John's Primary, Moy	180	177	172	182	189	197	189	182	177	-1.67%
503 6033	St Joseph's Primary, Galbally	164	166	176	177	180	179	170	170	180	9.76%
503 2678	St Patrick's Primary, Donaghmore	177	173	164	162	175	176	183	194	192	8.47%
506 6554	Windmill Integrated Primary	196	191	196	199	203	207	207	202	204	4.08%
503 2734	St Mary's Primary, Cabra	168	163	172	176	189	212	217	220	211	25.60%
503 6047	St Patrick's Primary, Annaghmore	218	216	239	224	218	216	216	222	217	-0.46%
503 2585	Edendork Primary	285	287	272	262	249	247	249	259	256	-10.18%
503 6590	Primate Dixon Memorial Primary	491	479	456	457	458	439	413	448	453	-7.74%
503 6504	St Patrick's Primary, Dungannon	506	501	510	538	577	600	631	658	682	34.78%

Demography

Births 2000 – 2008 by Wards

	2000	2001	2002	2003	2004	2005	2006	2007	2008	Average
Altmore	28	36	31	23	31	36	40	29	39	33
Augher	19	27	27	18	36	26	24	34	25	26
Aughnacloy	19	38	25	22	22	28	34	33	41	29
Ballygawley	31	30	30	36	34	43	37	35	36	35
Ballysaggart	38	43	26	34	38	41	36	51	54	40
Benburb	26	29	34	37	33	33	48	43	52	37
Caledon	32	25	28	19	34	29	24	29	24	27
Castlecaulfield	43	27	34	25	35	38	30	32	41	34
Clogher	28	30	29	25	29	21	28	29	25	27
Coalisland North	50	48	62	51	59	50	60	65	62	56
Coalisland South	37	47	35	35	49	55	41	42	58	44
Coalisland West & Newmills	30	44	39	52	46	42	38	50	48	43
Coolhill	36	28	38	27	42	40	53	47	47	40
Donaghmore	17	38	28	25	30	32	30	34	43	31
Drumglass	20	26	20	20	28	30	29	40	38	28
Fivemiletown	21	26	29	19	21	24	29	23	25	24
Killyman	27	19	27	18	30	32	30	43	44	30
Killymeal	24	16	22	37	38	35	44	40	45	33
Moy	28	48	35	34	48	43	46	62	47	43
Moygashel	22	33	26	21	25	23	32	33	30	27
Mullaghmore	20	29	37	32	31	30	37	39	39	33
Washing Bay	33	50	45	40	44	29	31	43	47	40

Source: Adapted from NINIS figures (www.ninis.nisra.gov.uk)

Dungannon & South Tyrone Borough Council Live Births: 1974 - 2010

Year	Live births DUNGANNON
1974	940
1975	924
1976	986
1977	874
1978	932
1979	951
1980	988
1981	950
1982	928
1983	998
1984	933
1985	967

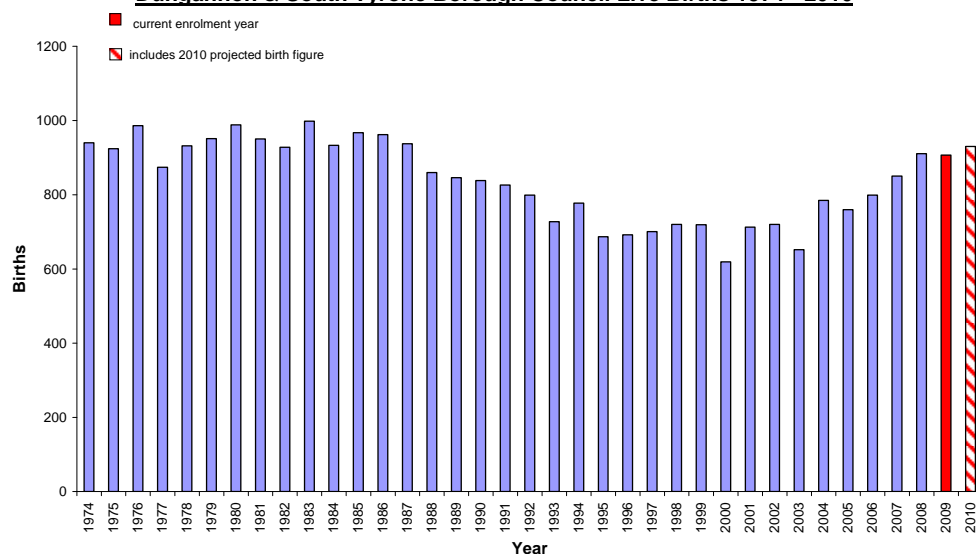
Year	Live births DUNGANNON
1986	962
1987	937
1988	860
1989	846
1990	838
1991	826
1992	799
1993	727
1994	777
1995	687
1996	692
1997	701

Year	Live births DUNGANNON
1998	720
1999	719
2000	619
2001	713
2002	720
2003	652
2004	785
2005	760
2006	799
2007	850
2008	911
2009	907
2010*	930

Source: Adapted from NISRA figures (www.nisra.gov.uk)

*Note that 2010 births are provisional from NISRA – Statistics Press Notice – Births in Northern Ireland (2010)

Dungannon & South Tyrone Borough Council Live Births 1974 - 2010



*Includes 2010

projected birth figure

Source: Adapted from NISRA figures (www.nisra.gov.uk)

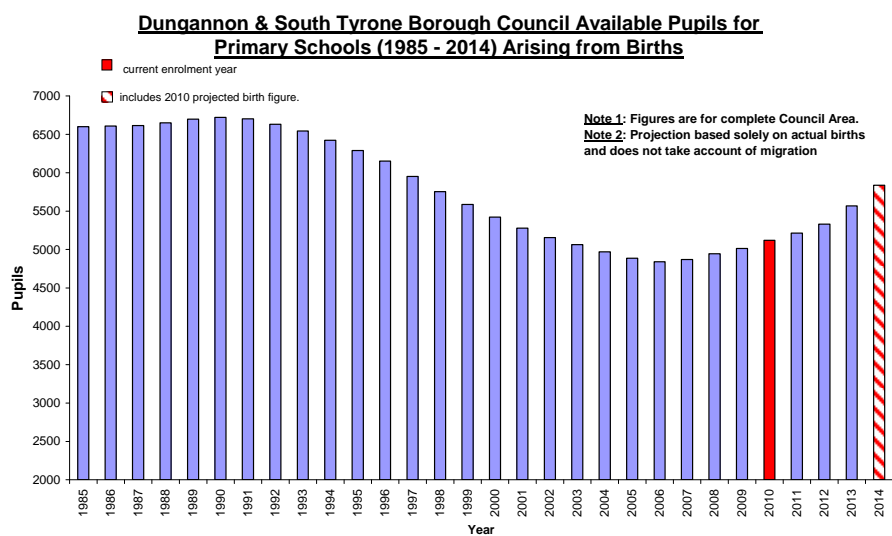
DUNGANNON Available Pupils for Primary School 1985 - 2014

YEAR	P7	P6	P5	P4	P3	P2	P1	TOTAL
1985	932	955	930	903	942	970	969	6600
1986	955	930	903	942	970	969	939	6607
1987	930	903	942	970	969	939	963	6615
1988	903	942	970	969	939	963	966	6651
1989	942	970	969	939	963	966	950	6698
1990	970	969	939	963	966	950	965	6721
1991	969	939	963	966	950	965	950	6701
1992	939	963	966	950	965	950	899	6630

1993	963	966	950	965	950	899	853	6544
1994	966	950	965	950	899	853	842	6423
1995	950	965	950	899	853	842	832	6290
1996	965	950	899	853	842	832	813	6152
1997	950	899	853	842	832	813	763	5951
1998	899	853	842	832	813	763	752	5753
1999	853	842	832	813	763	752	732	5587
2000	842	832	813	763	752	732	690	5423
2001	832	813	763	752	732	690	697	5278
2002	813	763	752	732	690	697	711	5156
2003	763	752	732	690	697	711	720	5063
2004	752	732	690	697	711	720	669	4969
2005	732	690	697	711	720	669	670	4887
2006	690	697	711	720	669	670	686	4841
2007	697	711	720	669	670	686	719	4870
2008	711	720	669	670	686	719	773	4946
2009	720	669	670	686	719	773	780	5015
2010	669	670	686	719	773	780	825	5120
2011	716	717	686	719	773	780	825	5214
2012	670	686	719	773	780	825	881	5331
2013	683	719	773	780	825	881	909	5567
2014	753	773	780	825	881	909	919	5837

Source: Based on NISRA figures (www.nisra.gov.uk)

These figures represent the children who would be available in the designated primary class in any particular year arising from the births. These figures do not include migrants or other changes such as new housing in the area.

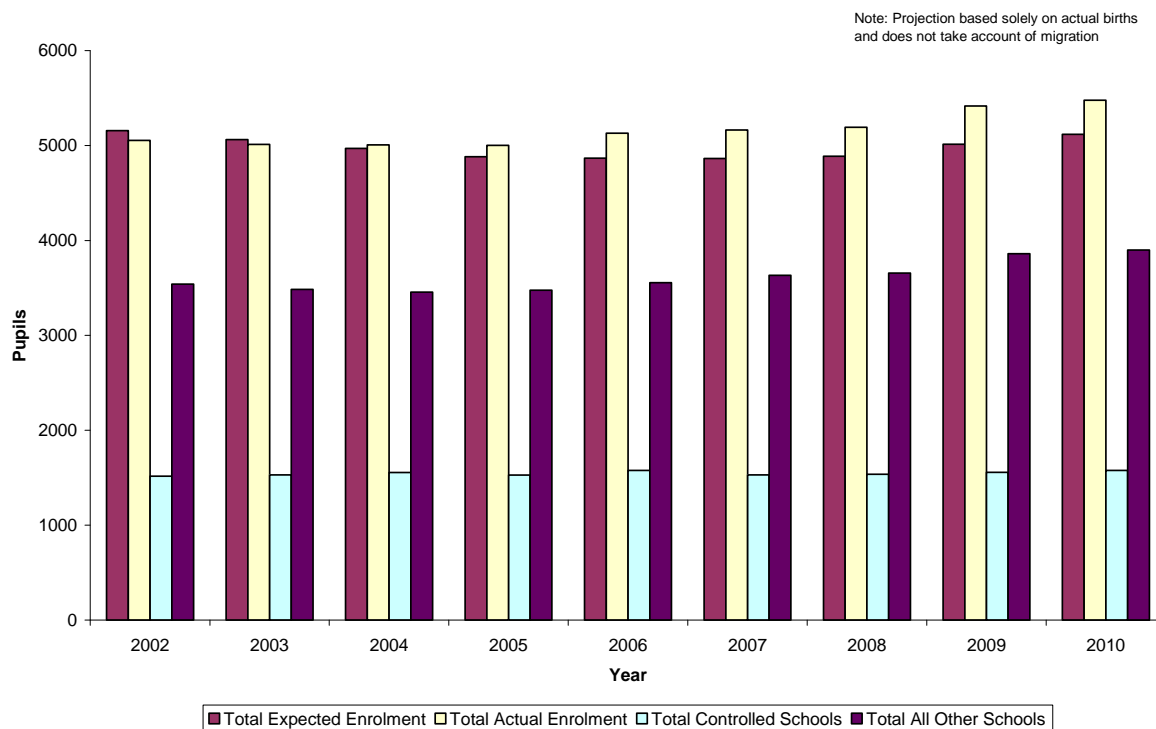


Source: Based on NISRA figures (www.nisra.gov.uk)

Projected enrolment based on actual births Vs Actual Enrolments 2002 - 2010

Dungannon	2002	2003	2004	2005	2006	2007	2008	2009	2010
Total Expected Enrolment	5156	5063	4969	4883	4868	4864	4886	5015	5120
Total Actual Enrolment	5055	5013	5008	5003	5131	5164	5192	5418	5477
Total Controlled Schools	1516	1529	1554	1528	1576	1531	1537	1557	1578
Total All Other Schools	3539	3484	3454	3475	3555	3633	3655	3861	3899

**Projected Based on Actual Births Vs Actual Enrolment for Primary Schools in Dungannon
DCA**



NOTE: We have not included a comparison chart for post-primary as pupils for post-primary schools come from across the district council boundaries. While there may be some transfers across council boundaries in the primary sector, these are of a more limited nature and are statistically less significant.

Pre-School Age Population Projections in Dungannon from NISRA 2006-based LGD projections

Age	2006	2007	2008	2009	2010	2011	2012	2013	2014	2015	2016	2017	2018	2019	2020	2021	% Change
0	777	830	882	919	952	982	1,005	1,023	1,044	1,069	1,092	1,114	1,134	1,150	1,162	1,170	50.58%
1	833	803	849	902	938	971	1,000	1,023	1,041	1,063	1,087	1,110	1,132	1,153	1,169	1,181	41.78%
2	743	840	805	849	901	938	971	1,000	1,022	1,041	1,063	1,088	1,111	1,133	1,153	1,170	57.47%
3	681	752	844	809	852	906	941	974	1,003	1,027	1,045	1,066	1,091	1,115	1,136	1,157	69.90%
Total	3,034	3,225	3,380	3,479	3,643	3,797	3,917	4,020	4,110	4,200	4,287	4,378	4,468	4,551	4,620	4,678	54.19%
		6.30%	4.81%	2.93%	4.71%	4.23%	3.16%	2.63%	2.24%	2.19%	2.07%	2.12%	2.06%	1.86%	1.52%	1.26%	

Source: Adapted from NISRA figures (www.nisra.gov.uk)

The following table shows the 3-year olds who will be available for pre-school enrolment in Dungannon & South Tyrone Borough Council Area from 2007 – 2021. The figures are calculated by adding 50% of the projected 3-year olds from two subsequent years (e.g. 2007 figures are calculated by adding 50% of 2006 and 50% of 2007).

Age	2006	2007	2008	2009	2010	2011	2012	2013	2014	2015	2016	2017	2018	2019	2020	2021	% Change
3	-	804	856	901	936	967	994	1014	1034	1057	1081	1103	1124	1142	1156	1166	45.12%
			6.53%	5.20%	3.89%	3.37%	2.74%	2.06%	1.92%	2.23%	2.27%	2.08%	1.90%	1.60%	1.23%	0.87%	

Source: Adapted from NISRA figures (www.nisra.gov.uk)

Primary School Age Population Projections in Dungannon from NISRA 2006-based LGD projections

Age	2006	2007	2008	2009	2010	2011	2012	2013	2014	2015	2016	2017	2018	2019	2020	2021	% Change
4	758	691	759	851	814	858	912	947	980	1,010	1,033	1,051	1,072	1,098	1,121	1,144	50.92%
5	667	775	699	769	861	825	869	921	958	991	1,020	1,043	1,062	1,084	1,109	1,132	69.72%
6	751	683	789	712	782	874	836	881	935	970	1,005	1,034	1,057	1,075	1,097	1,123	49.53%
7	750	743	676	780	705	773	865	828	872	925	962	995	1,024	1,048	1,067	1,088	45.07%
8	736	767	756	686	791	715	783	876	839	883	936	973	1,007	1,036	1,059	1,079	46.60%
9	783	752	778	767	696	802	723	793	887	849	894	948	985	1,018	1,048	1,072	36.91%
10	750	802	766	792	780	708	814	734	804	900	861	907	960	998	1,032	1,062	41.60%
Total	5,195	5,213	5,223	5,357	5,429	5,555	5,802	5,980	6,275	6,528	6,711	6,951	7,167	7,357	7,533	7,700	48.22%
		0.35%	0.19%	2.57%	1.34%	2.32%	4.45%	3.07%	4.93%	4.03%	2.80%	3.58%	3.11%	2.65%	2.39%	2.22%	

Source: Adapted from NISRA figures (www.nisra.gov.uk)

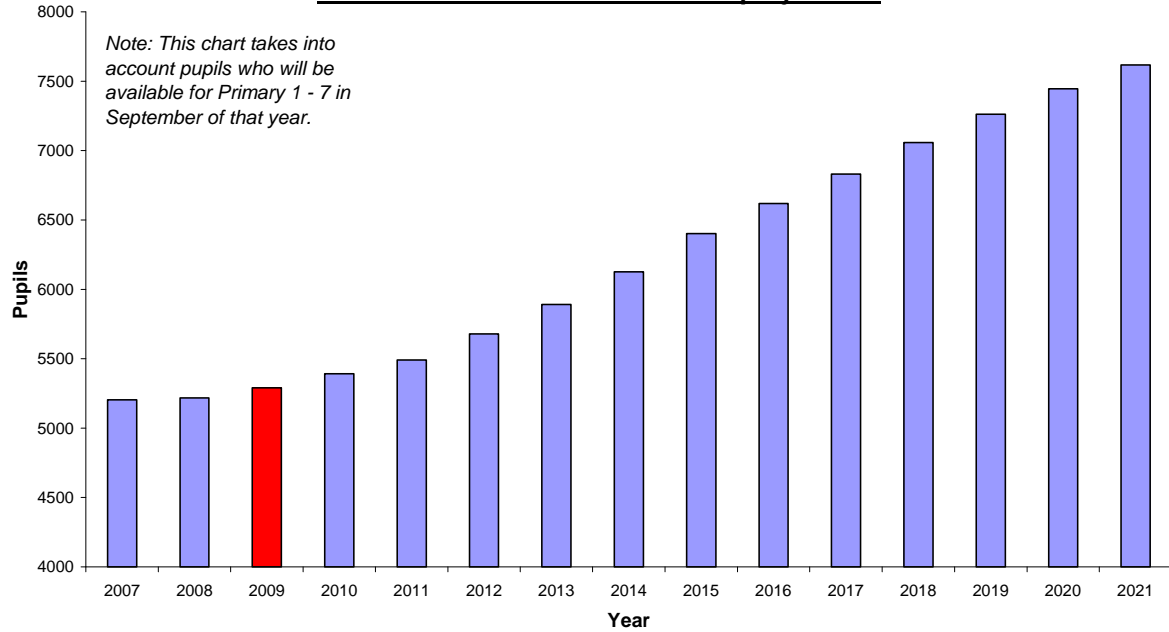
The following table shows the primary school aged children who will be available for primary school enrolment in Dungannon & South Tyrone Borough Council Area from 2007 – 2021. The figures are calculated by adding 50% of the projected children from two subsequent years (e.g. 2007 figures for 4 year olds are calculated by adding 50% of 4 year olds in 2006 and 50% of 4 year olds in 2007).

Age	2006	2007	2008	2009	2010	2011	2012	2013	2014	2015	2016	2017	2018	2019	2020	2021	% Change
4	-	725	725	805	833	836	885	930	964	995	1022	1042	1062	1085	1110	1133	56.31%
5	-	721	737	734	815	843	847	895	940	975	1006	1032	1053	1073	1097	1121	55.41%
6	-	717	736	751	747	828	855	859	908	953	988	1020	1046	1066	1086	1110	54.81%
7	-	747	710	728	743	739	819	847	850	899	944	979	1010	1036	1058	1078	44.34%
8	-	752	762	721	739	753	749	830	858	861	910	955	990	1022	1048	1069	42.25%
9	-	768	765	773	732	749	763	758	840	868	872	921	967	1002	1033	1060	38.11%
10	-	776	784	779	786	744	761	774	769	852	881	884	934	979	1015	1047	34.92%
Total	-	5204	5218	5290	5393	5492	5679	5891	6128	6402	6620	6831	7059	7262	7445	7617	46.36%
			0.27%	1.38%	1.95%	1.84%	3.40%	3.74%	4.01%	4.47%	3.41%	3.20%	3.34%	2.88%	2.52%	2.30%	

Source: Adapted from NISRA figures (www.nisra.gov.uk)

The following chart, based on the NISRA 2006-based projections, show the pupils who will be available for enrolment in primary schools in Dungannon & South Tyrone Borough Council Area from 2007 – 2021.

Dungannon Available Pupils for Primary Schools (2007 - 2021)
based on NISRA 2006-based LGD projections



Source: Based on NISRA figures (www.nisra.gov.uk)