

Statistical Analysis Primary School Sector:

Craigavon Borough Council Area

School by school enrolment over past nine years

Total P1 – P7 Actual Enrolment ex Units at October 2010 Census

Controlled Schools

DENI		Total P1-P7									
Ref No	School Name	Actual Enrolment ex Units at October Census									
		2002	2003	2004	2005	2006	2007	2008	2009	2010	% Change
501 1602	Bleary Primary	102	96	86	87	81	83	75	66	56	-45.10%
501 1165	Richmount Primary	115	123	119	108	105	102	98	95	91	-20.87%
501 1190	Tullygally Primary	113	124	117	118	115	103	91	89	91	-19.47%
501 1174	Birches Primary	75	71	73	72	65	77	90	101	108	44.00%
501 6065	Dickson Primary	140	143	145	121	120	118	120	133	140	0.00%
501 0992	Lurgan Model Primary	189	181	172	171	167	166	159	153	152	-19.58%
501 6080	Drumgor Primary	229	217	199	202	197	193	182	165	164	-28.38%
501 6117	Ballyoran Primary	247	237	223	219	218	207	211	176	169	-31.58%
501 6178	Donacloney Primary	131	135	149	153	175	192	194	204	213	62.60%
501 1127	Carrick Primary, Lurgan	273	273	266	264	260	253	231	237	234	-14.29%
501 1687	Maralin Village Primary	227	231	221	218	202	211	212	219	236	3.96%
501 1129	Hart Memorial Primary	284	282	262	254	260	254	253	238	242	-14.79%
501 6138	Bocombra Primary	260	259	259	254	255	264	270	277	291	11.92%
501 1189	Edenderry Primary, P'down	334	328	314	300	307	308	305	301	310	-7.19%
501 1598	Waringstown Primary	381	379	394	393	374	381	377	384	381	0.00%
501 1152	King's Park Primary	521	533	512	523	525	508	508	517	527	1.15%
501 6007	Millington Primary	584	548	554	540	554	557	556	558	571	-2.23%

Other Primary School Sector Provision

DENI		Total P1-P7									
Ref No	School Name	Actual Enrolment ex Units at October Census									
		2002	2003	2004	2005	2006	2007	2008	2009	2010	% Change
503 1164	St Mary's Primary, Maghery	90	99	94	92	77	72	70	73	81	-10.00%
503 6009	St Mary's Primary, Derrytrasna	83	83	76	73	60	70	74	89	91	9.64%
503 3324	St Patrick's Primary, Derrynaseer	143	139	131	124	123	104	97	87	92	-35.66%
503 1667	St Patrick's Primary, Magheralin	82	85	91	83	96	98	108	116	127	54.88%
503 6006	St Mary's Primary, Derrymore	113	104	108	118	128	124	131	141	147	30.09%
503 1160	St Teresa's Primary, Lurgan	244	230	227	219	230	209	180	182	172	-29.51%
506 6553	Portadown Integrated Primary School	193	197	192	192	198	198	104	206	207	7.25%
503 6586	Presentation Primary	68	65	71	87	112	152	183	199	210	208.82%
503 1168	St Patrick's Primary, A'common	233	226	217	215	227	220	220	206	210	-9.87%
504 6137	Seagoe Primary	237	245	239	230	248	250	244	257	261	10.13%
503 6101	St Brendan's Primary	322	307	311	310	324	339	349	335	356	10.56%

503 6173	St John the Baptist Primary	371	359	365	361	360	375	360	363	378	1.89%
503 1184	St Anthony's Primary	428	434	425	440	435	440	437	457	448	4.67%
503 1103	Tannaghmore Primary	704	707	703	695	696	664	648	646	632	-10.23%
503 6633	St Francis' Primary, Lurgan	673	660	660	656	672	684	693	686	711	5.65%

Demography

Births 2000 – 2008 by Wards

	2000	2001	2002	2003	2004	2005	2006	2007	2008	Average
Aghagallon	76	65	59	60	68	70	76	70	75	69
Annagh	32	30	27	45	38	32	36	52	47	38
Ballybay	34	28	17	34	34	36	38	44	51	35
Ballyoran	22	32	38	32	32	34	30	42	42	34
Bleary	50	58	56	63	51	58	48	60	48	55
Brownstown	37	45	32	32	30	46	41	37	32	37
Church	12	22	18	30	25	24	27	22	26	23
Corcrair	36	37	36	43	45	53	61	62	60	48
Court	48	40	34	35	39	45	41	53	51	43
Derrytrasna	57	72	70	83	79	76	87	83	74	76
Donaghcloney	32	33	32	25	38	40	58	45	64	41
Drumgask	67	57	62	72	73	95	94	95	88	78
Drumgor	42	51	42	33	40	46	56	52	51	46
Drumnamoe	46	35	36	32	44	26	33	29	26	34
Edenderry Craigavon	44	28	38	27	35	18	28	43	31	32
Kernan	54	93	55	62	85	85	75	88	99	77
Killycomain	22	29	26	22	33	32	22	21	28	26
Knocknashane	25	22	17	24	32	33	35	37	53	31
Magheralin	59	63	65	77	80	69	104	98	84	78
Mourneview	36	39	31	24	37	27	44	34	48	36
Parklake	28	37	32	20	39	40	51	68	74	43
Taghnevan	31	21	39	38	48	46	56	71	69	47
Tavanagh	25	38	23	26	24	33	30	32	41	30
The Birches	27	24	45	44	32	44	42	51	80	43
Waringstown	36	37	45	34	49	45	54	78	64	49
Woodville	57	63	55	53	46	40	57	49	64	54

Source: Adapted from NINIS figures (www.ninis.nisra.gov.uk)

Craigavon Borough Council Live Births: 1974 – 2010

Year	Live births CRAIGAVON
1974	1413
1975	1352
1976	1295
1977	1310
1978	1340
1979	1561
1980	1471
1981	1401
1982	1362
1983	1400
1984	1392
1985	1513

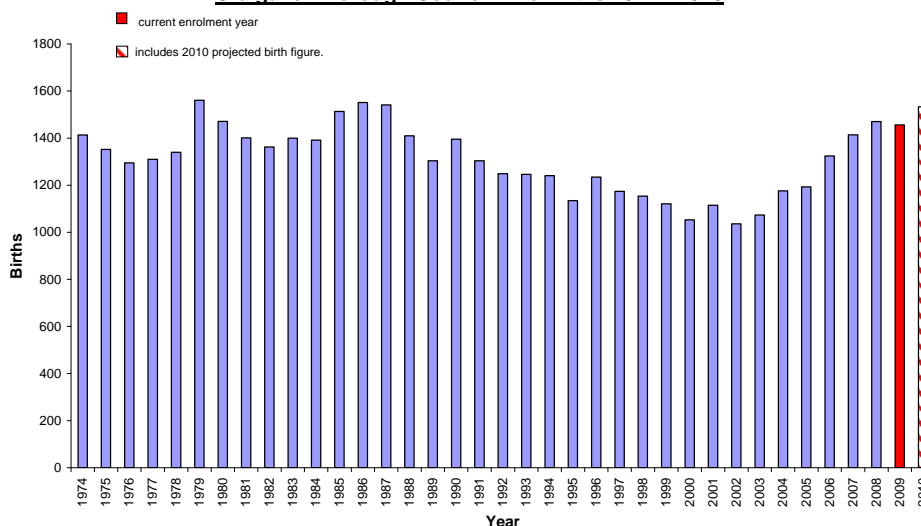
Year	Live births CRAIGAVON
1986	1551
1987	1541
1988	1410
1989	1304
1990	1396
1991	1304
1992	1249
1993	1246
1994	1240
1995	1134
1996	1234
1997	1174

Year	Live births CRAIGAVON
1998	1154
1999	1121
2000	1053
2001	1115
2002	1036
2003	1073
2004	1176
2005	1193
2006	1324
2007	1414
2008	1470
2009	1456
2010*	1533

Source: Adapted from NISRA figures (www.nisra.gov.uk)

*Note that 2010 births are provisional from NISRA – Statistics Press Notice – Births in Northern Ireland (2010)

Craigavon Borough Council Live Births 1974 - 2010



*Includes 2010 projected birth figure

Source: Adapted from NISRA figures (www.nisra.gov.uk)

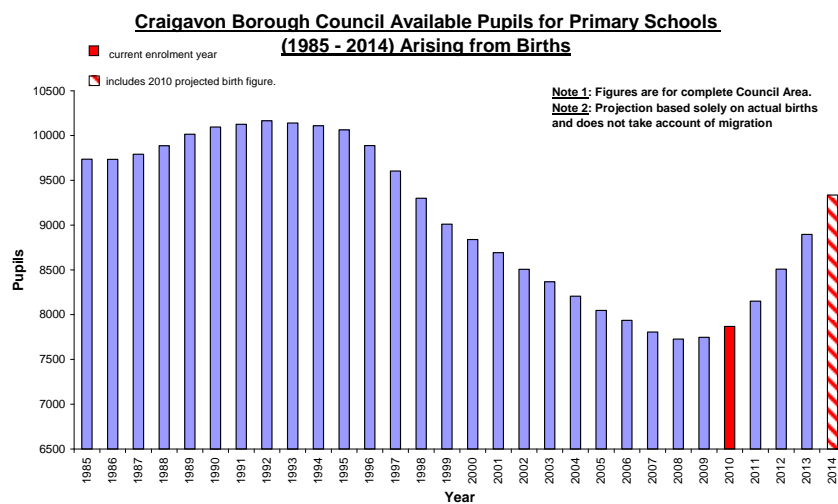
CRAIGAVON Available Pupils for Primary School 1985 - 2014

YEAR	P7	P6	P5	P4	P3	P2	P1	TOTAL
1985	1383	1324	1303	1325	1451	1516	1436	9736
1986	1324	1303	1325	1451	1516	1436	1382	9735
1987	1303	1325	1451	1516	1436	1382	1381	9793
1988	1325	1451	1516	1436	1382	1381	1396	9886
1989	1451	1516	1436	1382	1381	1396	1453	10014
1990	1516	1436	1382	1381	1396	1453	1532	10095
1991	1436	1382	1381	1396	1453	1532	1546	10125

1992	1382	1381	1396	1453	1532	1546	1476	10165
1993	1381	1396	1453	1532	1546	1476	1357	10140
1994	1396	1453	1532	1546	1476	1357	1350	10109
1995	1453	1532	1546	1476	1357	1350	1350	10063
1996	1532	1546	1476	1357	1350	1350	1277	9887
1997	1546	1476	1357	1350	1350	1277	1248	9603
1998	1476	1357	1350	1350	1277	1248	1243	9300
1999	1357	1350	1350	1277	1248	1243	1187	9011
2000	1350	1350	1277	1248	1243	1187	1184	8838
2001	1350	1277	1248	1243	1187	1184	1204	8692
2002	1277	1248	1243	1187	1184	1204	1164	8506
2003	1248	1243	1187	1184	1204	1164	1138	8367
2004	1243	1187	1184	1204	1164	1138	1087	8207
2005	1187	1184	1204	1164	1138	1087	1084	8048
2006	1184	1204	1164	1138	1087	1084	1076	7936
2007	1204	1164	1138	1087	1084	1076	1055	7807
2008	1164	1138	1087	1084	1076	1055	1125	7727
2009	1138	1087	1084	1076	1055	1125	1185	7748
2010	1087	1084	1076	1055	1125	1185	1259	7869
2011	1084	1076	1055	1125	1185	1259	1369	8151
2012	1076	1055	1125	1185	1259	1369	1442	8509
2013	1055	1125	1185	1259	1369	1442	1463	8896
2014	1125	1185	1259	1369	1442	1463	1495	9336

Source: Based on NISRA figures (www.nisra.gov.uk)

These figures represent the children who would be available in the designated primary class in any particular year arising from the births. These figures do not include migrants or other changes such as new housing in the area.

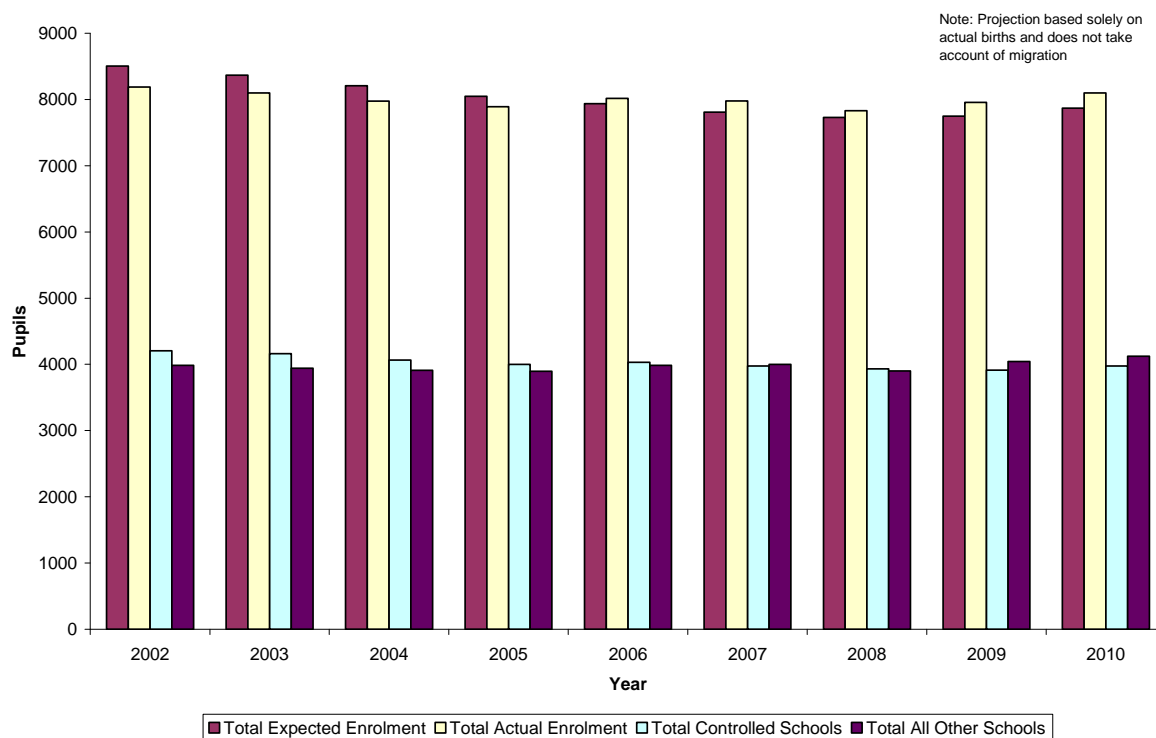


Source: Based on NISRA figures (www.nisra.gov.uk)

Projected enrolment based on actual births Vs Actual Enrolments 2002 - 2010

Craigavon	2002	2003	2004	2005	2006	2007	2008	2009	2010
Total Expected Enrolment	8506	8367	8207	8048	7936	7807	7727	7748	7869
Total Actual Enrolment	8189	8100	7975	7892	8015	7976	7830	7956	8099
Total Controlled Schools	4205	4160	4065	3997	4029	3977	3932	3913	3976
Total All Other Schools	3984	3940	3910	3895	3986	3999	3898	4043	4123

Projected Based on Actual Births Vs Actual Enrolment for Primary Schools in Craigavon DCA



NOTE: We have not included a comparison chart for post-primary as pupils for post-primary schools come from across the district council boundaries. While there may be some transfers across council boundaries in the primary sector, these are of a more limited nature and are statistically less significant.

Pre-School Age Population Projections in Craigavon from NISRA 2006-based LGD projections

Age	2006	2007	2008	2009	2010	2011	2012	2013	2014	2015	2016	2017	2018	2019	2020	2021	% Change
0	1,305	1,343	1,321	1,363	1,402	1,437	1,466	1,487	1,513	1,542	1,569	1,593	1,614	1,632	1,646	1,657	26.97%
1	1,226	1,306	1,343	1,320	1,361	1,400	1,435	1,463	1,484	1,510	1,539	1,566	1,590	1,611	1,629	1,644	34.09%
2	1,164	1,257	1,338	1,374	1,348	1,390	1,429	1,463	1,490	1,512	1,537	1,567	1,594	1,619	1,640	1,658	42.44%
3	1,053	1,167	1,260	1,339	1,375	1,348	1,389	1,429	1,463	1,491	1,513	1,538	1,567	1,595	1,619	1,640	55.75%
Total	4,748	5,073	5,262	5,396	5,486	5,575	5,719	5,842	5,950	6,055	6,158	6,264	6,365	6,457	6,534	6,599	38.98%
		6.84%	3.73%	2.55%	1.67%	1.62%	2.58%	2.15%	1.85%	1.76%	1.70%	1.72%	1.61%	1.45%	1.19%	0.99%	

Source: Adapted from NISRA figures (www.nisra.gov.uk)

The following table shows the 3-year olds who will be available for pre-school enrolment in Craigavon Borough Council Area from 2007 – 2021. The figures are calculated by adding 50% of the projected 3-year olds from two subsequent years (e.g. 2007 figures are calculated by adding 50% of 2006 and 50% of 2007).

Age	2006	2007	2008	2009	2010	2011	2012	2013	2014	2015	2016	2017	2018	2019	2020	2021	% Change
3	-	1110	1214	1300	1357	1362	1369	1409	1446	1477	1502	1526	1553	1581	1607	1630	46.80%
			9.32%	7.09%	4.42%	0.33%	0.51%	2.96%	2.63%	2.14%	1.69%	1.56%	1.77%	1.84%	1.64%	1.40%	

Source: Adapted from NISRA figures (www.nisra.gov.uk)

Primary School Age Population Projections in Craigavon from NISRA 2006-based LGD projections

Age	2006	2007	2008	2009	2010	2011	2012	2013	2014	2015	2016	2017	2018	2019	2020	2021	% Change
4	1,105	1,066	1,179	1,273	1,351	1,387	1,360	1,401	1,440	1,474	1,501	1,523	1,548	1,578	1,606	1,631	47.60%
5	1,147	1,119	1,078	1,191	1,284	1,364	1,399	1,371	1,412	1,451	1,486	1,513	1,535	1,561	1,591	1,619	41.15%
6	1,134	1,165	1,135	1,092	1,207	1,300	1,379	1,414	1,386	1,428	1,467	1,501	1,529	1,551	1,577	1,608	41.80%
7	1,182	1,148	1,180	1,148	1,104	1,219	1,314	1,394	1,429	1,400	1,441	1,481	1,516	1,543	1,566	1,592	34.69%
8	1,192	1,177	1,144	1,175	1,143	1,099	1,214	1,308	1,388	1,422	1,393	1,435	1,475	1,509	1,538	1,560	30.87%
9	1,254	1,197	1,182	1,148	1,178	1,147	1,103	1,217	1,310	1,390	1,426	1,397	1,438	1,478	1,513	1,540	22.81%
10	1,241	1,265	1,207	1,190	1,156	1,186	1,154	1,110	1,225	1,319	1,399	1,434	1,405	1,447	1,486	1,521	22.56%
Total	8,255	8,137	8,105	8,217	8,423	8,702	8,923	9,215	9,590	9,884	10,113	10,284	10,446	10,667	10,877	11,071	34.11%
		-1.43%	-0.39%	1.38%	2.51%	3.31%	2.54%	3.27%	4.07%	3.07%	2.32%	1.69%	1.58%	2.12%	1.97%	1.78%	

Source: Adapted from NISRA figures (www.nisra.gov.uk)

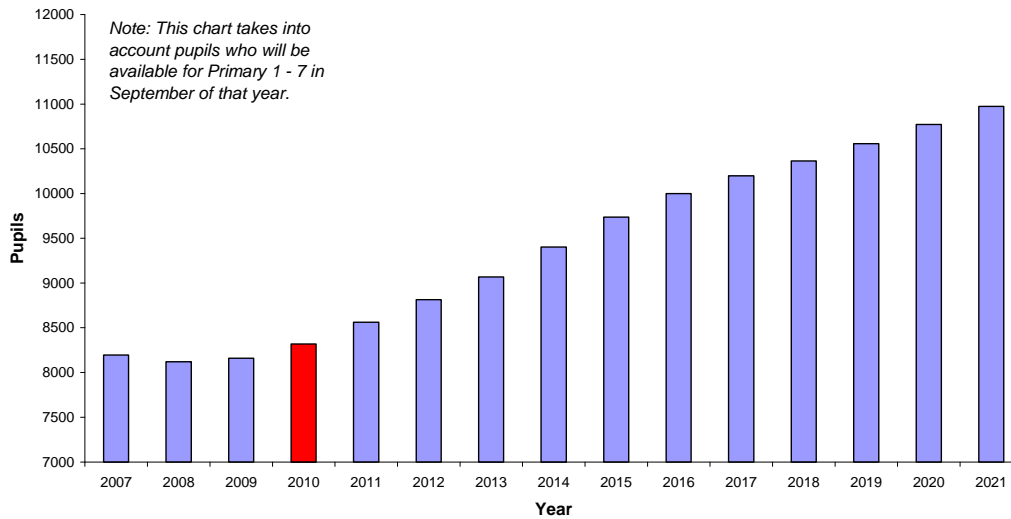
The following table shows the primary school aged children who will be available for primary school enrolment in Craigavon Borough Council area from 2007 – 2021. The figures are calculated by adding 50% of the projected children from two subsequent years (e.g. 2007 figures for 4 year olds are calculated by adding 50% of 4 year olds in 2006 and 50% of 4 year olds in 2007).

Age	2006	2007	2008	2009	2010	2011	2012	2013	2014	2015	2016	2017	2018	2019	2020	2021	% Change
4	-	1086	1123	1226	1312	1369	1374	1381	1421	1457	1488	1512	1536	1563	1592	1619	49.10%
5	-	1133	1099	1135	1238	1324	1382	1385	1392	1432	1469	1500	1524	1548	1576	1605	41.66%
6	-	1150	1150	1114	1150	1254	1340	1397	1400	1407	1448	1484	1515	1540	1564	1593	38.54%
7	-	1165	1164	1164	1126	1162	1267	1354	1412	1415	1421	1461	1499	1530	1555	1579	35.54%
8	-	1185	1161	1160	1159	1121	1157	1261	1348	1405	1408	1414	1455	1492	1524	1549	30.77%
9	-	1226	1190	1165	1163	1163	1125	1160	1264	1350	1408	1412	1418	1458	1496	1527	24.56%
10	-	1253	1236	1199	1173	1171	1170	1132	1168	1272	1359	1417	1420	1426	1467	1504	19.99%
Total	-	8196	8121	8161	8320	8563	8813	9069	9403	9737	9999	10199	10365	10557	10772	10974	33.89%
			-0.92%	0.49%	1.95%	2.91%	2.92%	2.91%	3.68%	3.56%	2.69%	2.00%	1.63%	1.85%	2.04%	1.88%	

Source: Adapted from NISRA figures (www.nisra.gov.uk)

The following chart, based on the NISRA 2006-based projections, show the pupils who will be available for enrolment in primary schools in Craigavon Borough Council Area from 2007 – 2021.

Craigavon Available Pupils for Primary Schools (2007 - 2021)
based on NISRA 2006-based LGD projections



Source: Based on NISRA figures (www.nisra.gov.uk)