

**Statistical Analysis Post Primary School Sector:
Dungannon and South Tyrone Borough Council Area**

Post Primary Schools

	2002	2003	2004	2005	2006	2007	2008	2009	2010
Controlled									
Aughnacloy College	119	145	165	177	187	197	179	176	186
Drumglass High	435	429	416	408	401	369	382	387	
Fivemiletown College	427	414	391	386	371	371	383	412	426
Maintained									
St Ciaran's High	794	760	810	795	783	786	776	779	783
St Joseph's College, Coalisland	523	515	500	504	454	453	414	378	356
St Patrick's College, Dungannon	561	536	553	553	521	547	581	600	632
Voluntary Grammar									
St Joseph's Donaghmore	494	500	500	495	501	515	506	527	555
St Patrick's Academy	1690	1685	1611	1565	1543	1480	1465	1420	1395
Dungannon Royal	651	646	654	654	647	650	656	646	658
Integrated									
Integrated College Dungannon	460	489	486	486	460	462	465	461	487
Special Schools									
Sperrinview School	70	71	69	71	78	83	84	87	87

Demography

Births 2000 – 2008 by Wards

	2000	2001	2002	2003	2004	2005	2006	2007	2008	Average
Altmore	28	36	31	23	31	36	40	29	39	33
Augher	19	27	27	18	36	26	24	34	25	26
Aughnacloy	19	38	25	22	22	28	34	33	41	29
Ballygawley	31	30	30	36	34	43	37	35	36	35
Ballysaggart	38	43	26	34	38	41	36	51	54	40
Benburb	26	29	34	37	33	33	48	43	52	37
Caledon	32	25	28	19	34	29	24	29	24	27
Castlecaulfield	43	27	34	25	35	38	30	32	41	34
Clogher	28	30	29	25	29	21	28	29	25	27
Coalisland North	50	48	62	51	59	50	60	65	62	56
Coalisland South	37	47	35	35	49	55	41	42	58	44
Coalisland West & Newmills	30	44	39	52	46	42	38	50	48	43
Coolhill	36	28	38	27	42	40	53	47	47	40
Donaghmore	17	38	28	25	30	32	30	34	43	31
Drumglass	20	26	20	20	28	30	29	40	38	28
Fivemiletown	21	26	29	19	21	24	29	23	25	24

Killyman	27	19	27	18	30	32	30	43	44	30
Killymeal	24	16	22	37	38	35	44	40	45	33
Moy	28	48	35	34	48	43	46	62	47	43
Moygashel	22	33	26	21	25	23	32	33	30	27
Mullaghmore	20	29	37	32	31	30	37	39	39	33
Washing Bay	33	50	45	40	44	29	31	43	47	40

Source: Adapted from NINIS figures (www.ninis.nisra.gov.uk)

Dungannon & South Tyrone Borough Council Live Births: 1974 - 2010

Year	Live births DUNGANNON
1974	940
1975	924
1976	986
1977	874
1978	932
1979	951
1980	988
1981	950
1982	928
1983	998
1984	933
1985	967

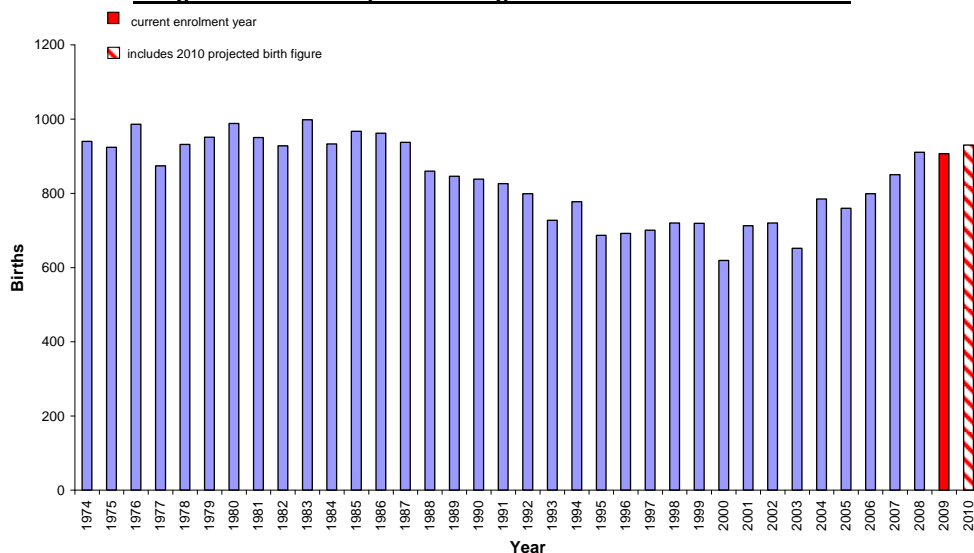
Year	Live births DUNGANNON
1986	962
1987	937
1988	860
1989	846
1990	838
1991	826
1992	799
1993	727
1994	777
1995	687
1996	692
1997	701

Year	Live births DUNGANNON
1998	720
1999	719
2000	619
2001	713
2002	720
2003	652
2004	785
2005	760
2006	799
2007	850
2008	911
2009	907
2010*	930

Source: Adapted from NISRA figures (www.nisra.gov.uk)

*Note that 2010 births are provisional from NISRA – Statistics Press Notice – Births in Northern Ireland (2010)

Dungannon & South Tyrone Borough Council Live Births 1974 - 2010



*Includes 2010

projected birth figure

Source: Adapted from NISRA figures (www.nisra.gov.uk)

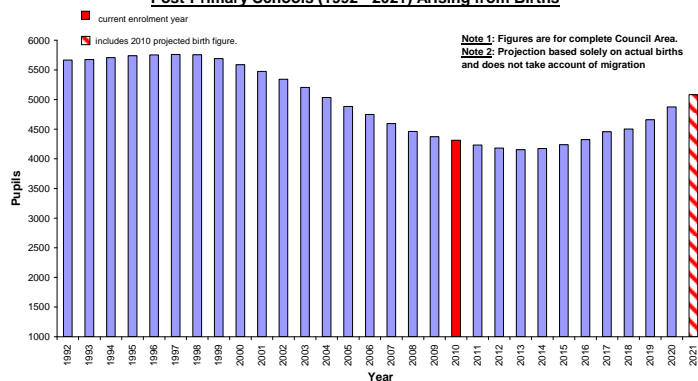
DUNGANNON Available Pupils for Post-Primary Schools 1992 - 2021

YEAR	Year 14	Year 13	Year 12	Year 11	Year 10	Year 9	Year 8	TOTAL
1992	438	516	930	903	942	970	969	5667
1993	449	502	903	942	970	969	939	5673
1994	437	488	942	970	969	939	963	5707
1995	424	508	970	969	939	963	966	5739
1996	443	524	969	939	963	966	950	5753
1997	456	523	939	963	966	950	965	5761
1998	455	507	963	966	950	965	950	5755
1999	441	520	966	950	965	950	899	5689
2000	453	521	950	965	950	899	853	5589
2001	454	513	965	950	899	853	842	5474
2002	447	521	950	899	853	842	832	5342
2003	453	513	899	853	842	832	813	5204
2004	446	485	853	842	832	813	763	5034
2005	422	461	842	832	813	763	752	4884
2006	401	455	832	813	763	752	732	4747
2007	396	449	813	763	752	732	690	4594
2008	391	439	763	752	732	690	697	4463
2009	382	412	752	732	690	697	711	4374
2010	359	406	732	690	697	711	720	4313
2011	353	395	690	697	711	720	669	4234
2012	344	372	697	711	720	669	670	4181
2013	324	376	711	720	669	670	686	4155
2014	327	384	720	669	670	686	719	4174
2015	334	389	669	670	686	719	773	4238
2016	338	361	670	686	719	773	780	4325
2017	314	362	686	719	773	780	825	4457
2018	337	387	686	719	773	780	825	4504
2019	315	370	719	773	780	825	881	4661
2020	321	388	773	780	825	881	909	4875
2021	354	417	780	825	881	909	919	5083

Source: Based on NISRA figures (www.nisra.gov.uk)

These figures represent the children who would be available in the designated post-primary class in any particular year arising from the births. These figures do not include migrants or other changes such as new housing in the area.

Dungannon & South Tyrone Borough Council Available Pupils for Post-Primary Schools (1992 - 2021) Arising from Births



Source: Based on NISRA figures (www.nisra.gov.uk)

Post-Primary School Age Population Projections in Dungannon from NISRA 2006-based LGD projections

Age	2006	2007	2008	2009	2010	2011	2012	2013	2014	2015	2016	2017	2018	2019	2020	2021	% Change
11	741	761	811	774	799	786	713	821	739	811	907	868	913	967	1,005	1,039	40.22%
12	790	748	765	815	778	801	788	716	824	741	813	911	871	916	971	1,008	27.59%
13	795	791	748	765	814	777	800	787	715	823	740	812	910	870	915	970	22.01%
14	827	809	800	756	772	821	783	807	795	722	829	746	820	916	876	922	11.49%
15	864	838	815	807	761	777	828	788	812	800	726	835	751	825	923	882	2.08%
16	850	876	846	822	813	767	784	833	794	819	805	731	841	757	830	928	9.18%
17	796	858	877	846	823	814	769	785	834	796	820	807	732	842	757	831	4.40%
Total	5,663	5,681	5,662	5,585	5,560	5,543	5,465	5,537	5,513	5,512	5,640	5,710	5,838	6,093	6,277	6,580	16.19%
		0.32%	-0.33%	-1.36%	-0.45%	-0.31%	-1.41%	1.32%	-0.43%	-0.02%	2.32%	1.24%	2.24%	4.37%	3.02%	4.83%	

Source: Adapted from NISRA figures (www.nisra.gov.uk)

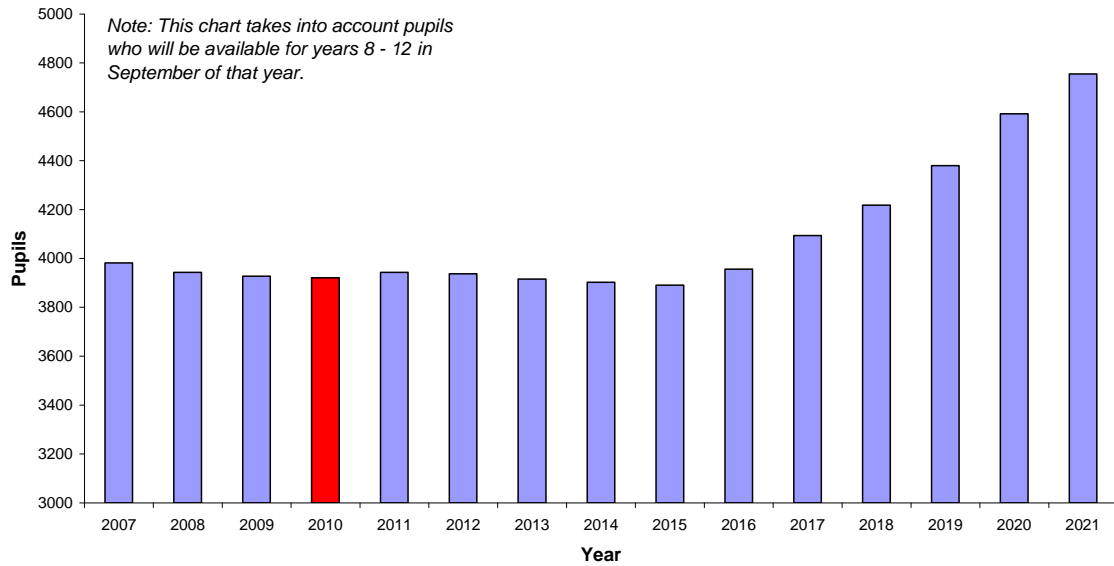
The following table shows the post-primary school aged children who will be available for post-primary school enrolment in Dungannon & South Tyrone Borough Council Area from 2007 – 2021. The figures are calculated by adding 50% of the projected children from two subsequent years (e.g. 2007 figures for 11 year olds are calculated by adding 50% of 11 year olds in 2006 and 50% of 11 year olds in 2007).

Age	2006	2007	2008	2009	2010	2011	2012	2013	2014	2015	2016	2017	2018	2019	2020	2021	% Change
11	-	751	786	793	787	793	750	767	780	775	859	888	891	940	986	1022	36.09%
12	-	769	757	790	797	790	795	752	770	783	777	862	891	894	944	990	28.67%
13	-	793	770	757	790	796	789	794	751	769	782	776	861	890	893	943	18.85%
14	-	818	805	778	764	797	802	795	801	759	776	788	783	868	896	899	9.90%
15	-	851	827	811	784	769	803	808	800	806	763	781	793	788	874	903	6.05%
16	-	863	861	834	818	790	776	809	814	807	812	768	786	799	794	879	1.85%
17	-	827	868	862	835	819	792	777	810	815	808	814	770	787	800	794	-3.99%
Total	-	5672	5672	5624	5573	5552	5504	5501	5525	5513	5576	5675	5774	5966	6185	6429	13.34%
			-0.01%	-0.85%	-0.91%	-0.38%	-0.86%	-0.05%	0.44%	-0.23%	1.15%	1.78%	1.74%	3.32%	3.68%	3.94%	
11 - 15	-	3982	3943	3928	3921	3943	3937	3916	3902	3891	3956	4094	4219	4380	4592	4756	19.42%
			-0.98%	-0.38%	-0.19%	0.57%	-0.15%	-0.55%	-0.34%	-0.28%	1.67%	3.48%	3.05%	3.82%	4.85%	3.56%	

Source: Adapted from NISRA figures (www.nisra.gov.uk)

The following chart, based on the NISRA 2006-based projections, show the pupils who will be available for enrolment in post-primary schools in Dungannon & South Tyrone Borough Council Area from 2007 – 2021.

Dungannon Available Pupils for Post-Primary Schools (2007 - 2021)
based on NISRA 2006-based LGD projections



Source: Based on NISRA figures (www.nisra.gov.uk)