

PLANNING & DEVELOPMENT

Statistical Analysis Post Primary School Sector: Armagh City and District Council Area

Post Primary Schools

	2002	2003	2004	2005	2006	2007	2008	2009	2010
Controlled									
Markethill High	478	481	471	472	451	455	469	473	483
City of Armagh High	440	412	397	373	369	316	290	278	245
Tandragee Junior High	270	263	252	237	234	227	249	251	252
Maintained									
St Brigid's Boys' High	314	323	302	280	233	233	207	216	218
St Catherine's College	990	1032	1017	1036	1039	1076	1087	1125	1155
St Patrick's High, Keady	1023	1035	1026	1041	1040	1022	1022	1004	1045
Voluntary Grammar									
St Patrick's Grammar School	750	750	750	780	772	750	796	783	803
Armagh Royal	682	679	666	659	654	657	684	679	682
Integrated									
Armagh Integrated College	-	-	50	107	153	140	61	Closed	Closed
Special Schools	2002	2003	2004	2005	2006	2007	2008	2009	2010
Lisanally School	95	95	102	96	94	94	96	99	99

Demography

Births 2000 – 2008 by Wards

	2000	2001	2002	2003	2004	2005	2006	2007	2008	Average
Abbey Park	31	36	29	37	37	40	44	39	44	37
Ballymartrim	16	38	28	27	26	26	24	42	35	29
Callan Bridge	46	37	33	37	30	43	37	50	62	42
Carrigatuke	22	38	39	39	25	34	42	42	30	35
Charlemount	35	42	29	29	28	34	28	30	42	33
Demesne	44	34	41	37	40	49	44	40	36	41
Derrynoose	62	55	61	52	45	55	67	63	55	57
Downs	45	37	42	42	40	48	42	47	46	43
Hamiltonsbawn	31	37	44	43	28	56	58	42	41	42
Hockley	21	16	23	22	26	24	23	34	21	23
Keady	35	23	30	18	28	32	23	34	30	28
Killeen	18	34	33	45	44	45	29	44	35	36
Killylea	28	35	27	29	33	30	31	32	45	32
Laurelvale	26	39	35	42	49	45	56	56	50	44
Loughgall	22	27	23	29	35	31	55	33	49	34
Markethill	30	23	33	31	37	35	45	41	42	35
Milford	20	22	20	28	26	17	39	38	47	29
Observatory	27	23	27	28	28	26	35	29	32	28
Poyntzpass	29	32	23	25	39	46	35	46	37	35
Rich Hill	36	34	38	36	31	29	39	29	39	35
Tandragee	38	29	41	64	33	39	38	34	40	40
The Mall	27	22	15	23	20	23	21	17	26	22

Source: Adapted from NINIS figures (www.ninis.nisra.gov.uk)

PLANNING & DEVELOPMENT

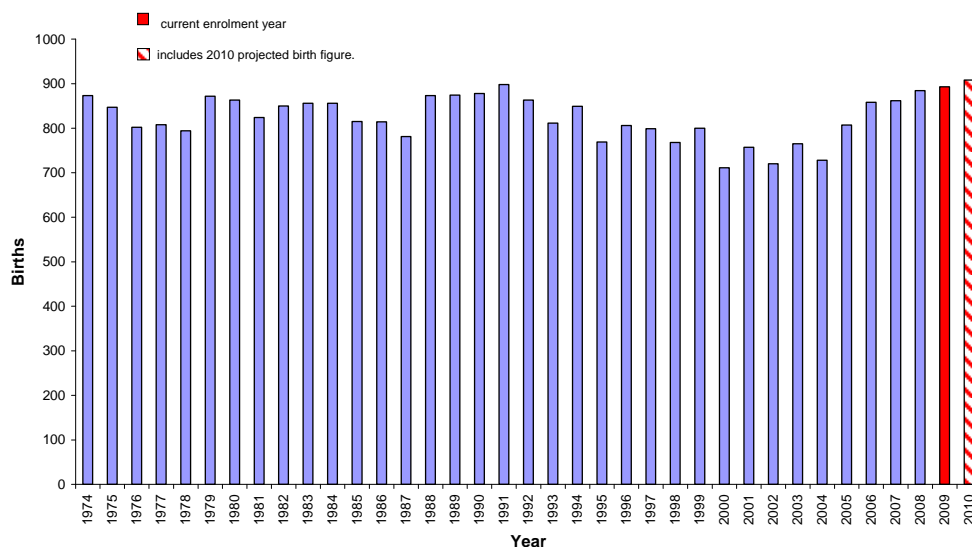
Armagh Live Births – 1974 – 2010

Year	Live births ARMAGH	Year	Live births ARMAGH	Year	Live births ARMAGH
1974	873	1986	814	1998	768
1975	847	1987	781	1999	800
1976	802	1988	873	2000	711
1977	808	1989	874	2001	757
1978	794	1990	878	2002	720
1979	872	1991	898	2003	765
1980	863	1992	863	2004	728
1981	824	1993	811	2005	807
1982	850	1994	849	2006	858
1983	856	1995	769	2007	862
1984	856	1996	806	2008	884
1985	815	1997	799	2009	893
				2010*	908

Source: Adapted from NISRA figures (www.nisra.gov.uk)

*Note that 2010 births are provisional from NISRA – Statistics Press Notice – Births in Northern Ireland (2010)

Armagh City & District Council Live Births 1974 - 2010



*Includes 2010 projected birth figure

Source: Adapted from NISRA figures (www.nisra.gov.uk)

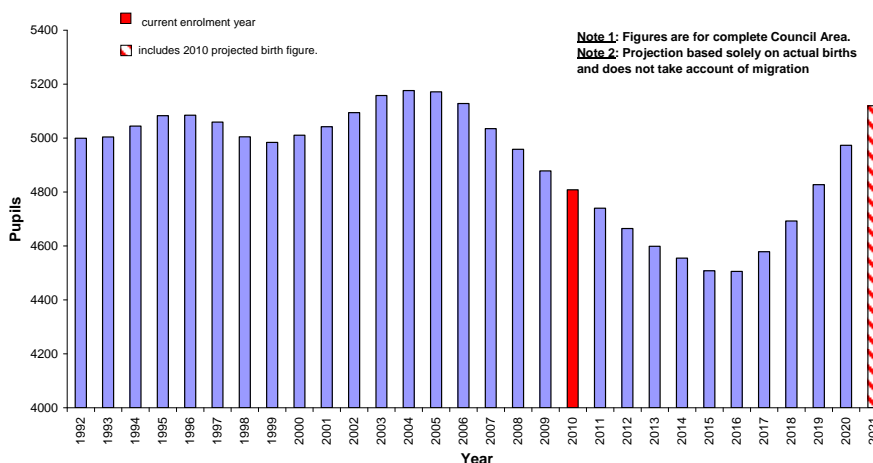
ARMAGH Available Pupils for Post-Primary Schools 1992 - 2021

YEAR	Year 14	Year 13	Year 12	Year 11	Year 10	Year 9	Year 8	TOTAL
1992	404	445	805	801	833	868	844	4999
1993	388	435	801	833	868	844	837	5004
1994	378	433	833	868	844	837	853	5045
1995	376	450	868	844	837	853	856	5083
1996	392	468	844	837	853	856	836	5085
1997	408	455	837	853	856	836	815	5059

PLANNING & DEVELOPMENT

1998	396	452	853	856	836	815	798	5005
1999	393	461	856	836	815	798	827	4985
2000	401	462	836	815	798	827	874	5011
2001	402	451	815	798	827	874	876	5042
2002	393	440	798	827	874	876	888	5095
2003	383	431	827	874	876	888	881	5158
2004	375	447	874	876	888	881	837	5176
2005	389	472	876	888	881	837	830	5172
2006	411	473	888	881	837	830	809	5128
2007	412	480	881	837	830	809	788	5035
2008	417	475	837	830	809	788	803	4959
2009	414	452	830	809	788	803	784	4878
2010	393	448	809	788	803	784	784	4808
2011	390	437	788	803	784	784	756	4740
2012	380	425	803	784	784	756	734	4665
2013	370	433	784	784	756	734	739	4599
2014	377	423	784	756	734	739	743	4555
2015	368	423	756	734	739	743	747	4509
2016	368	408	734	739	743	747	768	4505
2017	355	396	739	743	747	768	833	4579
2018	345	399	743	747	768	833	860	4693
2019	347	401	747	768	833	860	873	4828
2020	349	403	768	833	860	873	889	4974
2021	351	414	833	860	873	889	901	5120

**Armagh City & District Council Available Pupils for Post-Primary Schools
(1992 - 2021) Arising from Births**



Source: Based on NISRA figures (www.nisra.gov.uk)

These figures represent the children who would be available in the designated post-primary class in any particular year arising from the births. These figures do not include migrants or other changes such as new housing in the area.

PLANNING & DEVELOPMENT

Post-Primary School Age Population Projections in Armagh from NISRA 2006-based LGD projections

Age	2006	2007	2008	2009	2010	2011	2012	2013	2014	2015	2016	2017	2018	2019	2020	2021	% Change
11	859	834	823	876	890	849	801	805	809	838	889	918	935	921	931	939	9.31%
12	858	869	842	830	885	898	856	807	812	816	845	897	926	942	929	939	9.44%
13	844	860	870	844	831	886	899	857	808	813	817	846	898	927	943	930	10.19%
14	924	844	860	870	843	830	885	898	856	807	812	816	845	896	925	942	1.95%
15	910	930	848	863	874	846	833	888	901	859	810	815	819	848	900	928	1.98%
16	949	921	939	857	872	882	854	841	896	910	867	818	824	826	855	907	-4.43%
17	871	910	884	901	824	839	848	823	810	865	878	838	790	796	797	826	-5.17%
Total	6,215	6,168	6,066	6,041	6,019	6,030	5,976	5,919	5,892	5,908	5,918	5,948	6,037	6,156	6,280	6,411	3.15%
		-0.76%	-1.65%	-0.41%	-0.36%	0.18%	-0.90%	-0.95%	-0.46%	0.27%	0.17%	0.51%	1.50%	1.97%	2.01%	2.09%	

Source: Adapted from NISRA figures (www.nisra.gov.uk)

The following table shows the post-primary school aged children who will be available for post-primary school enrolment in Armagh City & District Council Area from 2007 – 2021. The figures are calculated by adding 50% of the projected children from two subsequent years (e.g. 2007 figures for 11 year olds are calculated by adding 50% of 11 year olds in 2006 and 50% of 11 year olds in 2007).

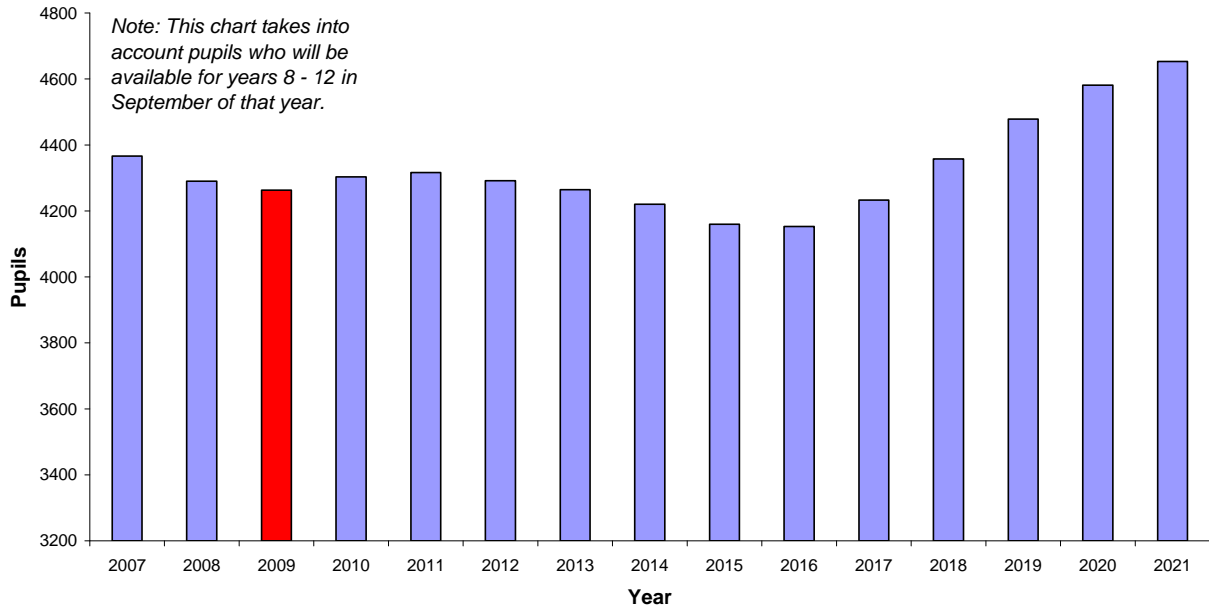
Age	2006	2007	2008	2009	2010	2011	2012	2013	2014	2015	2016	2017	2018	2019	2020	2021	% Change
11	-	847	829	850	883	870	825	803	807	824	864	904	927	928	926	935	10.45%
12	-	864	856	836	858	892	877	832	810	814	831	871	912	934	936	934	8.16%
13	-	852	865	857	838	859	893	878	833	811	815	832	872	913	935	937	9.92%
14	-	884	852	865	857	837	858	892	877	832	810	814	831	871	911	934	5.60%
15	-	920	889	856	869	860	840	861	895	880	835	813	817	834	874	914	-0.65%
16	-	935	930	898	865	877	868	848	869	903	889	843	821	825	841	881	-5.78%
17	-	891	897	893	863	832	844	836	817	838	872	858	814	793	797	812	-8.87%
Total	-	6192	6117	6054	6030	6025	6003	5948	5906	5900	5913	5933	5993	6097	6218	6346	2.49%
			-1.20%	-1.04%	-0.39%	-0.09%	-0.36%	-0.92%	-0.71%	-0.09%	0.22%	0.34%	1.00%	1.74%	1.99%	2.05%	
11 - 15	-	4366	4290	4263	4303	4316	4292	4265	4221	4160	4153	4233	4358	4479	4581	4653	6.57%
			-1.74%	-0.63%	0.94%	0.30%	-0.57%	-0.63%	-1.03%	-1.45%	-0.16%	1.91%	2.95%	2.78%	2.29%	1.57%	

Source: Adapted from NISRA figures (www.nisra.gov.uk)

PLANNING & DEVELOPMENT

The following chart, based on the NISRA 2006-based projections, show the pupils who will be available for enrolment in post-primary schools in Armagh City & District Council Area from 2007 – 2021.

Armagh Available Pupils for Post-Primary Schools (2007 - 2021)
based on NISRA 2006-based LGD projections



Source: Based on NISRA figures (www.nisra.gov.uk)