

## Newry and Mourne District Council Area

### Current school provision summary including all school sectors:

#### Pre- School Education

The following table provides a summary of the funded pre-school provision at October 2010 census date in the Newry and Mourne District Council Area:

Sector	Number of groups	Number of funded places October 2010
Pre-school playgroups	26	496
Irish Medium	5	50

#### Nursery Education

The following table provides a summary of funded nursery provision at October 2010 census date in the Newry and Mourne District Council Area:

Sector	Number of groups	Number of funded places October 2010
Controlled	2 Nursery Schools	133
	2 Nursery Units	52
Maintained	2 Nursery Schools	131
	10 Nursery Units	443
Integrated	-	-
Irish Medium	-	-

#### Primary

The following table provides an overview of the primary school provision at October 2010 census date in the Newry and Mourne District Council Area:

Sector	Number of Schools	Number of P1 to P7 excluding Special Units October 2010	Number of P1 to P7 including Special Units October 2010
Controlled	10	1254	1261
Maintained	44	8054	8117
Integrated	1	91	-
Irish Medium	1	109	-

## Post-Primary

The following table provides an overview of the post-primary school provision at October 2010 census date in the Newry and Mourne District Council Area:

Sector	Number of Schools	Number of pupils October 2010
Controlled	3	1408
Maintained	6	4176
Integrated	-	-
Vol. Grammar	5	4121
Irish Medium	-	-

## Special Schools

The following table provides an overview of the special school provision at October 2010 census date in the Newry and Mourne District Council Area:

Sector	Number of Schools	Number of pupils October 2010
Controlled	1	122

## School by school enrolment over past nine years

### Total P1 – P7 Actual Enrolment ex Units at October 2010 Census

#### Controlled Schools

DENI	School Name	Total P1-P7									
		Actual Enrolment ex Units at October Census									
Ref No		2002	2003	2004	2005	2006	2007	2008	2009	2010	% Change
501 1124	Kingsmills Primary	58	59	47	51	44	51	48	51	49	-15.52%
501 1137	Newtownhamilton Primary	76	74	73	81	66	61	64	61	61	-19.74%
501 1179	Bessbrook Primary	72	72	77	78	78	75	72	66	63	-12.50%
501 1019	Mullaglass Primary	77	76	62	64	64	62	65	68	69	-10.39%
501 1520	Dromore Road Primary	75	68	68	68	86	81	81	77	82	9.33%
501 1175	Cortamlet Primary	51	59	57	58	64	62	80	79	83	62.75%
505 6013	Kilbroney Integrated Primary	87	89	92	94	94	105	105	108	91	4.60%
501 1684	Annalong Primary	136	126	118	118	130	141	132	133	138	1.47%
501 6098	Brackenagh West Primary	130	132	137	140	141	149	149	153	157	20.77%
501 6451	Windsor Hill Primary	192	184	186	175	179	177	162	163	156	-18.75%
501 1649	Kilkeel Primary	520	515	487	482	460	455	420	410	396	-23.85%

### Other Primary School Sector Provision

DENI		Total P1-P7									
Ref No	School Name	Actual Enrolment ex Units at October Census									
		2002	2003	2004	2005	2006	2007	2008	2009	2010	% Change
503 1146	Anamar Primary	46	41	36	32	35	34	34	39	40	-13.04%
503 1107	St Teresa's Primary, Tullyherron	38	42	42	42	40	39	37	42	42	10.53%
503 1070	St Michael's Primary, N'hamilton	75	66	64	61	62	51	46	46	45	-40.00%
503 1301	Clontifleece Primary	55	59	61	61	56	50	54	42	46	-16.36%
503 6130	St Laurence's Primary, Beleeks	42	47	49	55	56	57	57	55	50	19.05%
503 1135	St Olivers' Primary, C'rovaddy	42	49	52	51	47	45	49	61	57	35.71%
503 6001	St Mary's Primary, G'drumman	77	69	75	73	72	70	69	64	69	-10.39%
503 3003	St Paul's Primary, Cabra	67	60	60	57	62	58	63	62	72	7.46%
503 1169	St Brigid's Primary, Drumilly	49	56	62	59	65	69	65	68	74	51.02%
503 1516	Moneydarragh Primary	90	86	90	92	90	82	81	76	75	-16.67%
503 0975	St Malachy's Primary, Ballymoyer	74	88	82	78	88	87	80	80	77	4.05%
503 6605	St Patrick's Primary, D'greenagh	50	54	57	66	74	69	71	81	77	54.00%
503 1325	St Joseph's Primary, Ballymartin	108	112	113	113	103	93	99	90	94	-12.96%
503 6122	Jonesborough Primary	105	97	86	79	81	80	84	94	97	-7.62%
503 1589	Grange Primary	121	124	119	122	124	110	106	96	98	-19.01%
503 0972	St Oliver Plunkett's Primary, Forkhill	112	116	117	112	109	120	114	111	104	-7.14%
504 6597	Bunscoil an luir	71	75	75	76	84	103	104	109	109	53.52%
503 1318	Killowen Primary	95	101	109	106	103	118	121	127	115	21.05%
503 1695	St Mary's Primary, Barr	87	97	104	103	101	108	108	116	115	32.18%
503 1154	Killeen Primary	113	110	100	103	104	104	108	106	118	4.42%
503 1694	Holy Cross Primary	88	80	84	86	91	101	107	114	119	35.23%
503 1086	Clonalig Primary	129	139	133	125	125	123	125	131	131	1.55%
503 6572	St Colman's Primary, Saval	127	144	129	137	136	144	146	156	153	20.47%
503 1163	St Brigid's Primary, G'drummond	136	140	144	157	161	154	148	154	155	13.97%
503 1088	Dromintee Primary	133	148	152	152	159	158	164	169	161	21.05%
503 6673	St Bronagh's Rostrevor*					202	198	183	172	172	-14.85%
503 1387	Rostrevor Con of Mercy*	114	101	96	91						
503 1386	St Mary's Boys Primary' Rostrevor*	121	114	117	119						
503 6545	St Colmans' Primary, Kilkeel	236	233	206	183	177	163	157	159	174	-26.27%
503 6099	St Patrick's Primary, Cullyhanna	192	186	191	187	181	175	178	180	174	-9.38%
503 1188	St Joseph's Primary, Meigh	177	181	172	178	180	180	179	177	179	1.13%
503 1213	St Clare's Convent Primary, Newry	275	248	244	221	219	224	219	211	205	-25.45%
503 1576	St Colman's Abbey Primary, Newry	312	285	273	254	248	219	206	212	213	-31.73%
503 1558	Ballyholland Primary	201	195	199	192	207	208	209	213	224	11.44%
503 6110	St Joseph's Primary, Bessbrook	277	269	267	263	233	239	219	215	232	-16.25%
503 6064	St Malachy's Primary, C'croppan	232	231	241	244	249	249	257	255	248	6.90%
503 6433	St Malachy's Primary, Carnagat	422	392	383	354	324	309	290	262	263	-37.68%
503 1697	St Patrick's Primary, Mayobridge	252	262	256	249	233	252	247	255	275	9.13%
503 1148	St Patrick's Primary, Crossmaglen	248	222	230	214	231	262	253	263	276	11.29%
503 6087	St Mary's Primary, Mullabawn	235	247	256	254	263	264	279	271	278	18.30%
503 3025	St Patrick's Primary, Ballymaghery	263	258	263	268	266	277	271	268	289	9.89%
503 1176	St Peter's Primary, Cloughreagh	254	255	274	281	285	285	302	302	303	19.29%
503 1158	St Patrick's Primary, Newry	307	305	307	329	309	303	298	307	305	-0.65%
503 6409	St Ronan's Primary, Newry	384	384	381	381	388	383	384	390	383	-0.26%
503 1130	Cloghogue Primary	389	402	416	411	404	400	402	392	388	-0.26%
503 1340	St Joseph's Convent Primary, Newry	449	451	454	466	456	452	461	431	400	-10.91%

503 1609	Carrick Primary, Warrenpoint	334	323	342	356	373	374	377	393	403	20.66%
503 6583	St Dallan's Primary, Warrenpoint	637	632	625	634	635	618	574	541	486	-23.70%
503 1658	St John's Primary, Glenn	52	46	44	39	28	25	24	20		Closed

\*Rostrevor Convent of Mercy Primary School and St. Mary's Boys Primary School, Rostrevor amalgamated in September 2006 to become St Bronagh's Primary School, Rostrevor. St. John's Glenn closed August 2010

## Post Primary Schools

	2002	2003	2004	2005	2006	2007	2008	2009	2010
<b>Controlled</b>									
Kilkeel High	802	799	799	780	763	730	728	711	721
Newry High	529	560	540	552	545	526	521	515	505
Newtownhamilton High	152	161	171	174	179	177	177	186	182
<b>Maintained</b>									
St Columban's College	403	380	355	336	297	277	255	254	238
St Joseph's Boys' High, Newry	457	466	444	431	442	446	434	430	446
St Joseph's High, Crossmaglen	567	577	553	521	531	547	573	577	605
St Mark's High, Warrenpoint	820	812	830	861	859	838	826	871	877
St Mary's High, Newry	535	535	514	537	529	542	565	574	546
St Paul's High, Bessbrook	1290	1290	1290	1329	1379	1400	1404	1445	1464
<b>Voluntary Grammar</b>									
Abbey Grammar School	875	866	866	865	843	855	873	880	887
Our Lady's Grammar School	860	860	860	860	857	860	847	861	861
St Colman's College	853	854	861	866	866	875	886	919	940
Sacred Heart Grammar School	870	870	866	866	851	845	838	836	846
St Louis Grammar Kilkeel	570	569	568	572	573	570	577	586	587
<b>Special Schools</b>									
Rathore School	99	91	95	95	94	106	108	112	122

## Demography

### Births 2000 – 2008 by Wards

	2000	2001	2002	2003	2004	2005	2006	2007	2008	Average
Annalong	40	33	43	30	36	42	33	42	45	38
Ballybot	26	36	26	20	25	17	32	25	29	26
Bessbrook	35	28	35	31	29	35	40	39	40	35
Binnian	35	40	38	39	36	44	40	57	48	42
Burren & Kilbroney	60	57	55	57	69	75	73	53	91	66
Camlough	43	61	41	48	67	57	47	72	50	54
Clonallan	63	78	76	65	71	62	59	57	58	65
Creggan	46	49	45	62	68	57	59	56	54	55
Crossmaglen	42	50	42	41	27	60	50	55	43	46
Daisy Hill	51	73	44	51	53	63	48	49	59	55
Derryleckagh	53	68	60	56	84	77	76	84	74	70
Derrymore	60	54	47	59	50	54	43	55	55	53
Donaghmore	40	38	61	40	54	45	52	49	46	47
Drumalane	38	45	49	50	43	46	50	48	54	47
Drumgullion	43	55	37	42	46	23	45	43	44	42
Fathom	37	39	48	60	44	44	43	50	35	44
Forkhill	54	55	67	55	74	57	78	78	79	66
Kilkeel Central	46	47	41	47	39	39	47	53	68	47
Kilkeel South	42	39	43	47	36	37	28	34	32	38
Lisnacree	30	28	37	33	35	47	38	37	39	36
Mayobridge	48	40	58	57	65	65	56	73	84	61
Newtownhamilton	38	46	44	25	50	51	45	46	68	46
Rostrevor	29	33	32	40	14	21	29	33	35	30
Seaview	38	40	32	40	24	27	30	34	36	33
Silver Bridge	45	53	72	59	69	56	62	64	68	61
Spelga	41	42	48	37	65	58	55	66	63	53
St Marys'	22	36	25	29	22	19	24	28	33	26
St Patricks'	49	56	47	37	43	40	42	45	63	47
Tullyhappy	45	41	37	50	46	53	54	59	60	49
Windsor Hill	40	36	31	28	26	36	34	36	40	34

Source: Adapted from NINIS figures ([www.ninis.nisra.gov.uk](http://www.ninis.nisra.gov.uk))

## PLANNING & DEVELOPMENT

### Religious Make-up of Area by Ward

Wards	Catholic				Other Than Catholic			
	All Ages	11 to Under 18	4 to Under 11	Birth to Under 4	All Ages	11 to Under 18	4 to Under 11	Birth to Under 4
Annalong	39.71%	46.30%	45.54%	38.07%	60.29%	53.70%	54.46%	61.93%
Ballybot	91.34%	93.51%	91.51%	87.29%	8.66%	6.49%	8.49%	12.71%
Bessbrook	60.19%	71.76%	70.11%	63.87%	39.81%	28.24%	29.89%	36.13%
Binnian	45.61%	52.15%	45.35%	43.75%	54.39%	47.85%	54.65%	56.25%
Burren and Kilbroney	90.73%	91.89%	96.33%	90.38%	9.27%	8.11%	3.67%	9.62%
Camlough	92.67%	95.72%	92.66%	84.80%	7.33%	4.28%	7.34%	15.20%
Clonallan	85.06%	87.42%	91.00%	87.67%	14.94%	12.58%	9.00%	12.33%
Creggan	89.67%	92.31%	88.62%	81.01%	10.33%	7.69%	11.38%	18.99%
Crossmaglen	90.75%	93.20%	89.13%	77.17%	9.25%	6.80%	10.87%	22.83%
Daisy Hill	89.88%	88.83%	88.39%	86.49%	10.12%	11.17%	11.61%	13.51%
Derryleckagh	85.10%	93.47%	88.44%	78.54%	14.90%	6.53%	11.56%	21.46%
Derrymore	83.25%	89.68%	84.66%	74.44%	16.75%	10.32%	15.34%	25.56%
Donaghmore	59.77%	65.44%	64.45%	62.43%	40.23%	34.56%	35.55%	37.57%
Drumalane	90.72%	91.46%	91.58%	93.24%	9.28%	8.54%	8.42%	6.76%
Drumgullion	83.58%	89.37%	87.98%	80.32%	16.42%	10.63%	12.02%	19.68%
Fathom	94.17%	96.44%	95.62%	88.75%	5.83%	3.56%	4.38%	11.25%
Forkhill	91.84%	92.35%	91.30%	87.78%	8.16%	7.65%	8.70%	12.22%
Kilkeel Central	21.37%	20.48%	18.39%	22.64%	78.63%	79.52%	81.61%	77.36%
Kilkeel South	55.42%	61.62%	66.34%	62.59%	44.58%	38.38%	33.66%	37.41%
Lisnacree	61.46%	68.82%	63.21%	64.29%	38.54%	31.18%	36.79%	35.71%
Mayobridge	82.49%	89.17%	84.59%	85.39%	17.51%	10.83%	15.41%	14.61%
Newtownhamilton	61.59%	67.59%	61.30%	55.63%	38.41%	32.41%	38.70%	44.37%
Rostrevor	84.54%	92.43%	91.38%	89.63%	15.46%	7.57%	8.62%	10.37%
Seaview	84.75%	92.46%	88.65%	86.98%	15.25%	7.54%	11.35%	13.02%
Silver Bridge	94.28%	96.46%	98.37%	84.40%	5.72%	3.54%	1.63%	15.60%
Spelga	80.20%	83.57%	85.13%	77.60%	19.80%	16.43%	14.87%	22.40%
St Mary's	85.67%	86.59%	90.16%	86.09%	14.33%	13.41%	9.84%	13.91%
St Patrick's	89.73%	91.77%	96.02%	88.07%	10.27%	8.23%	3.98%	11.93%
Tullyhappy	49.27%	53.82%	52.24%	49.03%	50.73%	46.18%	47.76%	50.97%
Windsor Hill	68.52%	74.15%	74.51%	68.46%	31.48%	25.85%	25.49%	31.54%

Source: Adapted from NISRA figures ([www.nisra.gov.uk](http://www.nisra.gov.uk))

## PLANNING & DEVELOPMENT

### Newry & Mourne Council Live Births 1974 - 2010

Year	Live births NEWRY
1974	1515
1975	1503
1976	1564
1977	1511
1978	1649
1979	1777
1980	1756
1981	1685
1982	1742
1983	1671
1984	1663
1985	1670

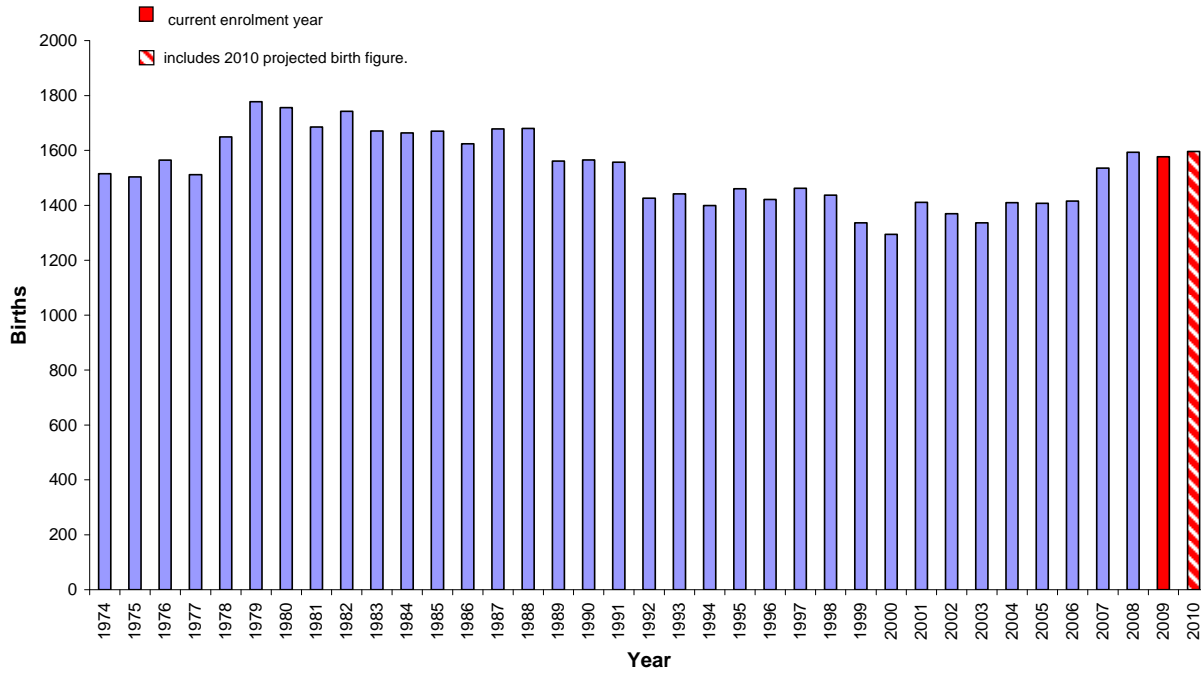
Year	Live births NEWRY
1986	1624
1987	1678
1988	1680
1989	1561
1990	1565
1991	1557
1992	1426
1993	1441
1994	1399
1995	1460
1996	1421
1997	1462

Year	Live births NEWRY
1998	1437
1999	1336
2000	1294
2001	1411
2002	1369
2003	1336
2004	1409
2005	1407
2006	1415
2007	1535
2008	1593
2009	1577
2010*	<b>1596</b>

Source: Adapted from NISRA figures ([www.nisra.gov.uk](http://www.nisra.gov.uk))

\*Note that 2010 births are provisional from NISRA – Statistics Press Notice – Births in Northern Ireland (2010)

### Newry & Mourne District Council Live Births 1974 - 2010



\*Includes 2010 projected birth figure

Source: Adapted from NISRA figures ([www.nisra.gov.uk](http://www.nisra.gov.uk))

## PLANNING & DEVELOPMENT

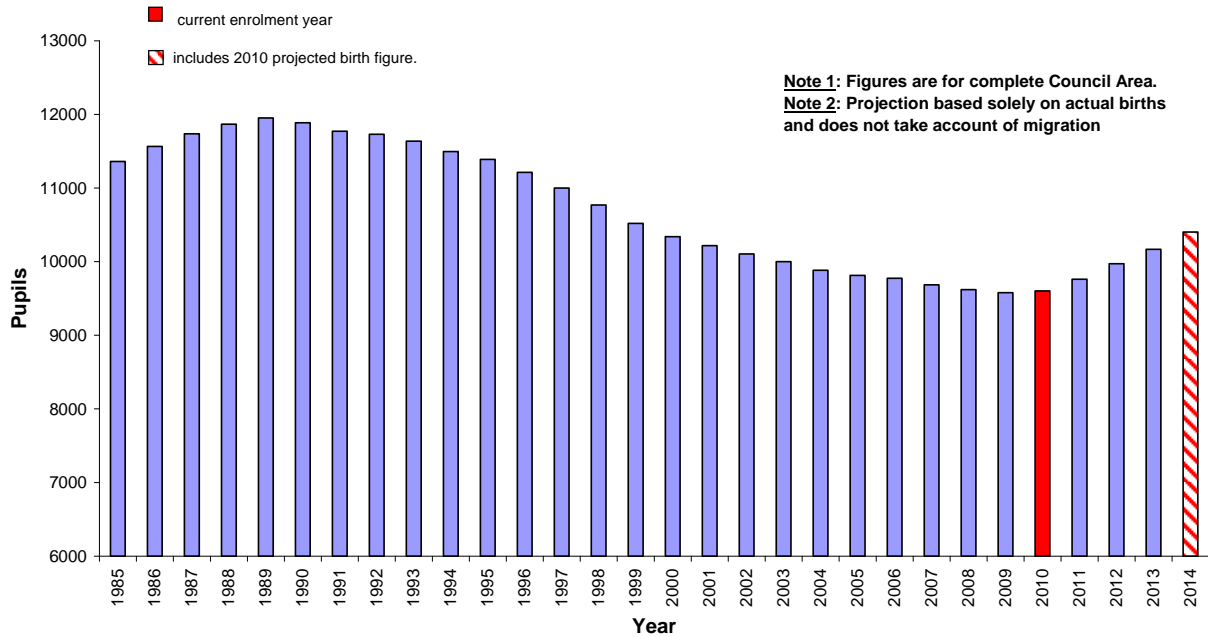
<b><u>NEWRY Available Pupils for Primary School 1985 - 2014</u></b>								
<b>YEAR</b>	<b>P7</b>	<b>P6</b>	<b>P5</b>	<b>P4</b>	<b>P3</b>	<b>P2</b>	<b>P1</b>	<b>TOTAL</b>
<b>1985</b>	1509	1534	1538	1580	1713	1767	1721	<b>11360</b>
<b>1986</b>	1534	1538	1580	1713	1767	1721	1714	<b>11565</b>
<b>1987</b>	1538	1580	1713	1767	1721	1714	1707	<b>11738</b>
<b>1988</b>	1580	1713	1767	1721	1714	1707	1667	<b>11867</b>
<b>1989</b>	1713	1767	1721	1714	1707	1667	1667	<b>11954</b>
<b>1990</b>	1767	1721	1714	1707	1667	1667	1647	<b>11888</b>
<b>1991</b>	1721	1714	1707	1667	1667	1647	1651	<b>11772</b>
<b>1992</b>	1714	1707	1667	1667	1647	1651	1679	<b>11731</b>
<b>1993</b>	1707	1667	1667	1647	1651	1679	1621	<b>11638</b>
<b>1994</b>	1667	1667	1647	1651	1679	1621	1563	<b>11494</b>
<b>1995</b>	1667	1647	1651	1679	1621	1563	1561	<b>11388</b>
<b>1996</b>	1647	1651	1679	1621	1563	1561	1492	<b>11213</b>
<b>1997</b>	1651	1679	1621	1563	1561	1492	1434	<b>11000</b>
<b>1998</b>	1679	1621	1563	1561	1492	1434	1420	<b>10769</b>
<b>1999</b>	1621	1563	1561	1492	1434	1420	1430	<b>10519</b>
<b>2000</b>	1563	1561	1492	1434	1420	1430	1441	<b>10339</b>
<b>2001</b>	1561	1492	1434	1420	1430	1441	1442	<b>10218</b>
<b>2002</b>	1492	1434	1420	1430	1441	1442	1450	<b>10106</b>
<b>2003</b>	1434	1420	1430	1441	1442	1450	1387	<b>10001</b>
<b>2004</b>	1420	1430	1441	1442	1450	1387	1315	<b>9883</b>
<b>2005</b>	1430	1441	1442	1450	1387	1315	1353	<b>9815</b>
<b>2006</b>	1441	1442	1450	1387	1315	1353	1390	<b>9776</b>
<b>2007</b>	1442	1450	1387	1315	1353	1390	1353	<b>9688</b>
<b>2008</b>	1450	1387	1315	1353	1390	1353	1373	<b>9619</b>
<b>2009</b>	1387	1315	1353	1390	1353	1373	1408	<b>9577</b>
<b>2010</b>	1315	1353	1390	1353	1373	1408	1411	<b>9602</b>
<b>2011</b>	1353	1390	1353	1373	1408	1411	1475	<b>9762</b>
<b>2012</b>	1390	1353	1373	1408	1411	1475	1564	<b>9973</b>
<b>2013</b>	1353	1373	1408	1411	1475	1564	1585	<b>10168</b>
<b>2014</b>	1373	1408	1411	1475	1564	1585	1587	<b>10402</b>

*Source: Based on NISRA figures ([www.nisra.gov.uk](http://www.nisra.gov.uk))*

These figures represent the children who would be available in the designated primary class in any particular year arising from the births. These figures do not include migrants or other changes such as new housing in the area.

## PLANNING & DEVELOPMENT

### Newry & Mourne District Council Available Pupils for Primary Schools (1985 - 2014) Arising from Births



*Source: Based on NISRA figures ([www.nisra.gov.uk](http://www.nisra.gov.uk))*

### NEWRY Available Pupils for Post-Primary Schools 1992 - 2021

YEAR	Year 14	Year 13	Year 12	Year 11	Year 10	Year 9	Year 8	TOTAL
1992	709	828	1538	1580	1713	1767	1721	<b>9855</b>
1993	721	830	1580	1713	1767	1721	1714	<b>10044</b>
1994	723	853	1713	1767	1721	1714	1707	<b>10196</b>
1995	743	925	1767	1721	1714	1707	1667	<b>10242</b>
1996	805	954	1721	1714	1707	1667	1667	<b>10233</b>
1997	830	929	1714	1707	1667	1667	1647	<b>10160</b>
1998	809	925	1707	1667	1667	1647	1651	<b>10072</b>
1999	805	922	1667	1667	1647	1651	1679	<b>10037</b>
2000	802	900	1667	1647	1651	1679	1621	<b>9966</b>
2001	783	900	1647	1651	1679	1621	1563	<b>9844</b>
2002	783	889	1651	1679	1621	1563	1561	<b>9747</b>
2003	774	892	1679	1621	1563	1561	1492	<b>9581</b>
2004	776	907	1621	1563	1561	1492	1434	<b>9352</b>
2005	789	875	1563	1561	1492	1434	1420	<b>9133</b>
2006	762	844	1561	1492	1434	1420	1430	<b>8941</b>
2007	735	843	1492	1434	1420	1430	1441	<b>8793</b>
2008	734	805	1434	1420	1430	1441	1442	<b>8704</b>
2009	701	774	1420	1430	1441	1442	1450	<b>8656</b>
2010	674	767	1430	1441	1442	1450	1387	<b>8588</b>
2011	667	772	1441	1442	1450	1387	1315	<b>8472</b>
2012	672	778	1442	1450	1387	1315	1353	<b>8395</b>
2013	677	778	1450	1387	1315	1353	1390	<b>8349</b>

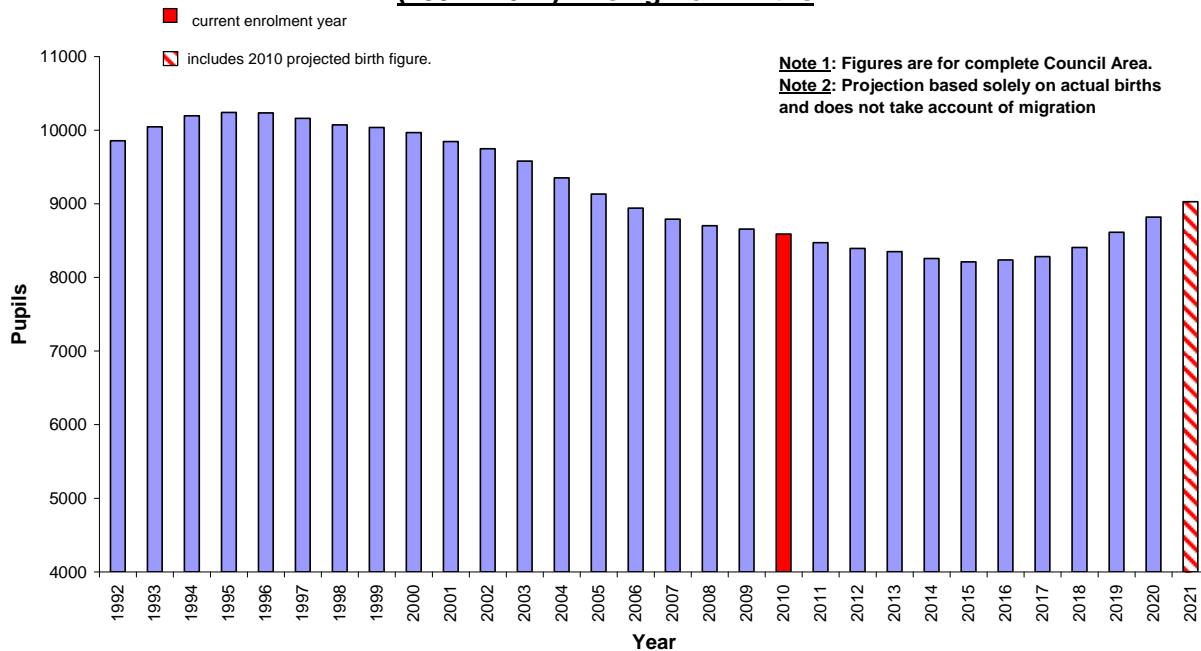
## PLANNING & DEVELOPMENT

<b>2014</b>	678	783	1387	1315	1353	1390	1353	<b>8257</b>
<b>2015</b>	681	749	1315	1353	1390	1353	1373	<b>8212</b>
<b>2016</b>	652	710	1353	1390	1353	1373	1408	<b>8237</b>
<b>2017</b>	618	730	1390	1353	1373	1408	1411	<b>8282</b>
<b>2018</b>	636	751	1353	1373	1408	1411	1475	<b>8405</b>
<b>2019</b>	653	730	1373	1408	1411	1475	1564	<b>8614</b>
<b>2020</b>	636	741	1408	1411	1475	1564	1585	<b>8820</b>
<b>2021</b>	645	760	1411	1475	1564	1585	1587	<b>9027</b>

Source: Based on NISRA figures ([www.nisra.gov.uk](http://www.nisra.gov.uk))

These figures represent the children who would be available in the designated post-primary class in any particular year arising from the births. These figures do not include migrants or other changes such as new housing in the area.

### Newry & Mourne District Council Available Pupils for Post-Primary Schools (1992 - 2021) Arising from Births



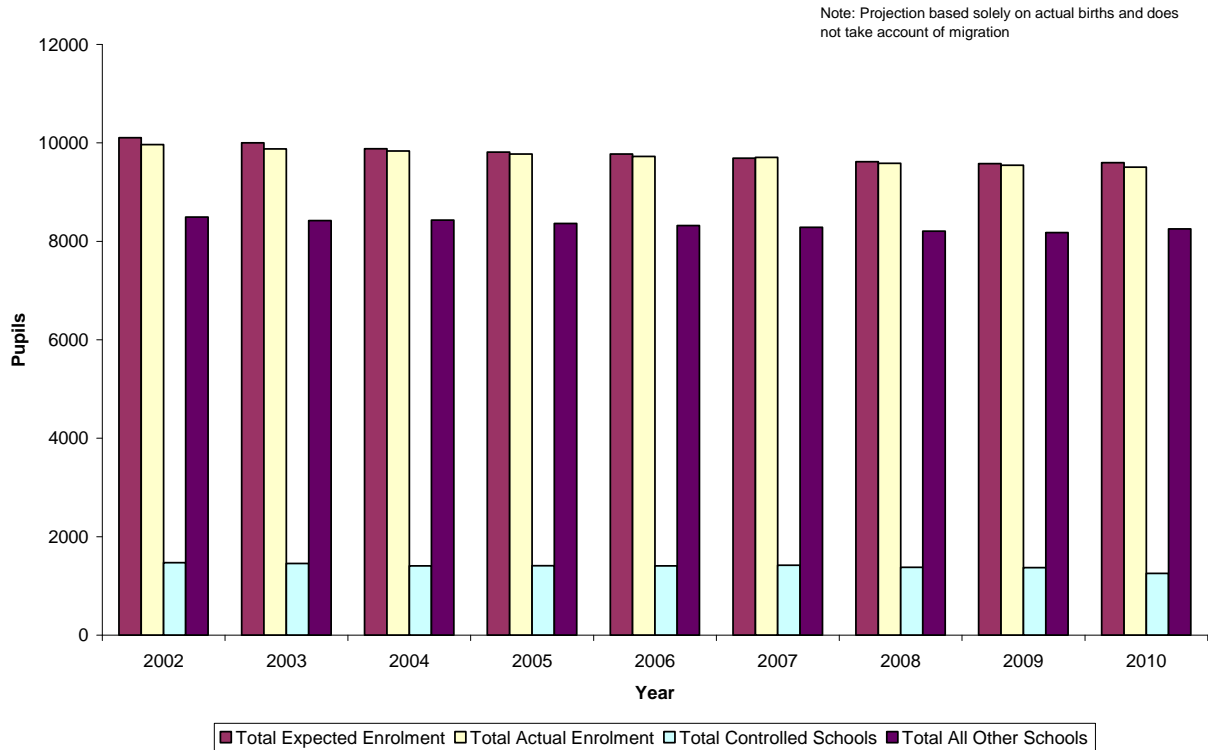
Source: Based on NISRA figures ([www.nisra.gov.uk](http://www.nisra.gov.uk))

## PLANNING & DEVELOPMENT

### Projected enrolment based on actual births Vs Actual Enrolments 2002 - 2010

Newry	2002	2003	2004	2005	2006	2007	2008	2009	2010
<b>Total Expected Enrolment</b>	10106	10001	9883	9815	9776	9688	9619	9577	9602
<b>Total Actual Enrolment</b>	9967	9876	9836	9775	9725	9705	9587	9547	9508
<b>Total Controlled Schools</b>	1474	1454	1404	1409	1406	1419	1378	1369	1254
<b>Total All Other Schools</b>	8493	8422	8432	8366	8319	8286	8209	8178	8254

**Projected Based on Actual Births Vs Actual Enrolment for Primary Schools in Newry & Mourne DCA**



NOTE: We have not included a comparison chart for post-primary as pupils for post-primary schools come from across the district council boundaries. While there may be some transfers across council boundaries in the primary sector, these are of a more limited nature and are statistically less significant.

## PLANNING & DEVELOPMENT

### Pre-School Age Population Projections in Newry from NISRA 2006-based LGD projections

Age	2006	2007	2008	2009	2010	2011	2012	2013	2014	2015	2016	2017	2018	2019	2020	2021	% Change
0	1,434	1,515	1,618	1,665	1,710	1,750	1,781	1,804	1,831	1,861	1,886	1,905	1,917	1,923	1,923	1,917	33.68%
1	1,466	1,472	1,544	1,648	1,695	1,740	1,779	1,810	1,834	1,860	1,890	1,916	1,935	1,947	1,953	1,952	33.15%
2	1,430	1,476	1,479	1,550	1,653	1,700	1,744	1,784	1,815	1,839	1,866	1,895	1,921	1,940	1,952	1,958	36.92%
3	1,378	1,456	1,495	1,496	1,568	1,672	1,718	1,763	1,802	1,834	1,857	1,884	1,915	1,941	1,960	1,972	43.11%
<b>Total</b>	<b>5,708</b>	<b>5,919</b>	<b>6,136</b>	<b>6,359</b>	<b>6,626</b>	<b>6,862</b>	<b>7,022</b>	<b>7,161</b>	<b>7,282</b>	<b>7,394</b>	<b>7,499</b>	<b>7,600</b>	<b>7,688</b>	<b>7,751</b>	<b>7,788</b>	<b>7,799</b>	<b>36.63%</b>
		<b>3.70%</b>	<b>3.67%</b>	<b>3.63%</b>	<b>4.20%</b>	<b>3.56%</b>	<b>2.33%</b>	<b>1.98%</b>	<b>1.69%</b>	<b>1.54%</b>	<b>1.42%</b>	<b>1.35%</b>	<b>1.16%</b>	<b>0.82%</b>	<b>0.48%</b>	<b>0.14%</b>	

*Source: Adapted from NISRA figures (www.nisra.gov.uk)*

The following table shows the 3-year olds who will be available for pre-school enrolment in Newry & Mourne District Council Area from 2007 – 2021. The figures are calculated by adding 50% of the projected 3-year olds from two subsequent years (e.g. 2007 figures are calculated by adding 50% of 2006 and 50% of 2007).

Age	2006	2007	2008	2009	2010	2011	2012	2013	2014	2015	2016	2017	2018	2019	2020	2021	% Change
3	-	1475	1567	1642	1688	1730	1766	1793	1818	1846	1874	1896	1911	1920	1923	1920	30.21%
			<b>6.24%</b>	<b>4.79%</b>	<b>2.80%</b>	<b>2.52%</b>	<b>2.05%</b>	<b>1.53%</b>	<b>1.39%</b>	<b>1.57%</b>	<b>1.49%</b>	<b>1.17%</b>	<b>0.82%</b>	<b>0.47%</b>	<b>0.16%</b>	<b>-0.16%</b>	

*Source: Adapted from NISRA figures (www.nisra.gov.uk)*

## PLANNING & DEVELOPMENT

### Primary School Age Population Projections in Newry from NISRA 2006-based LGD projections

Age	2006	2007	2008	2009	2010	2011	2012	2013	2014	2015	2016	2017	2018	2019	2020	2021	% Change
4	1,447	1,403	1,475	1,513	1,513	1,586	1,690	1,737	1,782	1,821	1,852	1,876	1,903	1,934	1,960	1,979	36.77%
5	1,370	1,469	1,419	1,491	1,529	1,529	1,601	1,706	1,753	1,798	1,838	1,870	1,893	1,921	1,952	1,978	44.38%
6	1,376	1,380	1,477	1,425	1,498	1,535	1,535	1,608	1,713	1,759	1,804	1,845	1,876	1,900	1,927	1,959	42.37%
7	1,406	1,392	1,393	1,488	1,436	1,509	1,546	1,546	1,619	1,724	1,771	1,816	1,857	1,888	1,913	1,940	37.98%
8	1,459	1,415	1,398	1,398	1,493	1,441	1,514	1,551	1,550	1,624	1,729	1,776	1,822	1,862	1,895	1,919	31.53%
9	1,452	1,467	1,420	1,402	1,402	1,498	1,445	1,517	1,555	1,555	1,627	1,734	1,781	1,827	1,867	1,899	30.79%
10	1,460	1,452	1,466	1,418	1,400	1,400	1,496	1,444	1,516	1,554	1,553	1,626	1,732	1,779	1,824	1,865	27.74%
<b>Total</b>	<b>9,970</b>	<b>9,978</b>	<b>10,048</b>	<b>10,135</b>	<b>10,271</b>	<b>10,498</b>	<b>10,827</b>	<b>11,109</b>	<b>11,488</b>	<b>11,835</b>	<b>12,174</b>	<b>12,543</b>	<b>12,864</b>	<b>13,111</b>	<b>13,338</b>	<b>13,539</b>	<b>35.80%</b>
		<b>0.08%</b>	<b>0.70%</b>	<b>0.87%</b>	<b>1.34%</b>	<b>2.21%</b>	<b>3.13%</b>	<b>2.60%</b>	<b>3.41%</b>	<b>3.02%</b>	<b>2.86%</b>	<b>3.03%</b>	<b>2.56%</b>	<b>1.92%</b>	<b>1.73%</b>	<b>1.51%</b>	

*Source: Adapted from NISRA figures (www.nisra.gov.uk)*

The following table shows the primary school aged children who will be available for primary school enrolment in Newry & Mourne District Council Area from 2007 – 2021. The figures are calculated by adding 50% of the projected children from two subsequent years (e.g. 2007 figures for 4 year olds are calculated by adding 50% of 4 year olds in 2006 and 50% of 4 year olds in 2007).

Age	2006	2007	2008	2009	2010	2011	2012	2013	2014	2015	2016	2017	2018	2019	2020	2021	% Change
4	-	1425	1439	1494	1513	1550	1638	1714	1760	1802	1837	1864	1890	1919	1947	1970	38.21%
5	-	1420	1444	1455	1510	1529	1565	1654	1730	1776	1818	1854	1882	1907	1937	1965	38.43%
6	-	1378	1429	1451	1462	1517	1535	1572	1661	1736	1782	1825	1861	1888	1914	1943	41.00%
7	-	1399	1393	1441	1462	1473	1528	1546	1583	1672	1748	1794	1837	1873	1901	1927	37.71%
8	-	1437	1407	1398	1446	1467	1478	1533	1551	1587	1677	1753	1799	1842	1879	1907	32.71%
9	-	1460	1444	1411	1402	1450	1472	1481	1536	1555	1591	1681	1758	1804	1847	1883	29.02%
10	-	1456	1459	1442	1409	1400	1448	1470	1480	1535	1554	1590	1679	1756	1802	1845	26.68%
<b>Total</b>	-	<b>9974</b>	<b>10013</b>	<b>10092</b>	<b>10203</b>	<b>10385</b>	<b>10663</b>	<b>10968</b>	<b>11299</b>	<b>11662</b>	<b>12005</b>	<b>12359</b>	<b>12704</b>	<b>12988</b>	<b>13225</b>	<b>13439</b>	<b>34.74%</b>
			<b>0.39%</b>	<b>0.78%</b>	<b>1.10%</b>	<b>1.78%</b>	<b>2.68%</b>	<b>2.87%</b>	<b>3.01%</b>	<b>3.21%</b>	<b>2.94%</b>	<b>2.95%</b>	<b>2.79%</b>	<b>2.24%</b>	<b>1.82%</b>	<b>1.62%</b>	

*Source: Adapted from NISRA figures (www.nisra.gov.uk)*

## PLANNING & DEVELOPMENT

### Post-Primary School Age Population Projections in Newry from NISRA 2006-based LGD projections

Age	2006	2007	2008	2009	2010	2011	2012	2013	2014	2015	2016	2017	2018	2019	2020	2021	% Change
11	1,476	1,472	1,462	1,475	1,427	1,409	1,408	1,504	1,452	1,523	1,561	1,561	1,633	1,741	1,788	1,833	24.19%
12	1,423	1,482	1,477	1,465	1,478	1,429	1,411	1,411	1,506	1,454	1,526	1,564	1,563	1,637	1,743	1,791	25.86%
13	1,474	1,426	1,484	1,478	1,466	1,479	1,429	1,411	1,411	1,507	1,454	1,527	1,565	1,563	1,637	1,744	18.32%
14	1,499	1,473	1,425	1,482	1,477	1,463	1,477	1,426	1,409	1,410	1,505	1,452	1,525	1,563	1,560	1,636	9.14%
15	1,602	1,509	1,481	1,431	1,489	1,483	1,470	1,483	1,433	1,415	1,415	1,512	1,457	1,532	1,568	1,567	-2.18%
16	1,559	1,608	1,512	1,483	1,433	1,491	1,485	1,472	1,485	1,434	1,416	1,417	1,513	1,459	1,533	1,570	0.71%
17	1,466	1,526	1,570	1,477	1,449	1,402	1,459	1,454	1,440	1,454	1,405	1,389	1,388	1,483	1,430	1,503	2.52%
<b>Total</b>	<b>10,499</b>	<b>10,496</b>	<b>10,411</b>	<b>10,291</b>	<b>10,219</b>	<b>10,156</b>	<b>10,139</b>	<b>10,161</b>	<b>10,136</b>	<b>10,197</b>	<b>10,282</b>	<b>10,422</b>	<b>10,644</b>	<b>10,978</b>	<b>11,259</b>	<b>11,644</b>	<b>10.91%</b>
		-0.03%	-0.81%	-1.15%	-0.70%	-0.62%	-0.17%	0.22%	-0.25%	0.60%	0.83%	1.36%	2.13%	3.14%	2.56%	3.42%	

*Source: Adapted from NISRA figures (www.nisra.gov.uk)*

The following table shows the post-primary school aged children who will be available for post-primary school enrolment in Newry & Mourne District Council Area from 2007 – 2021. The figures are calculated by adding 50% of the projected children from two subsequent years (e.g. 2007 figures for 11 year olds are calculated by adding 50% of 11 year olds in 2006 and 50% of 11 year olds in 2007).

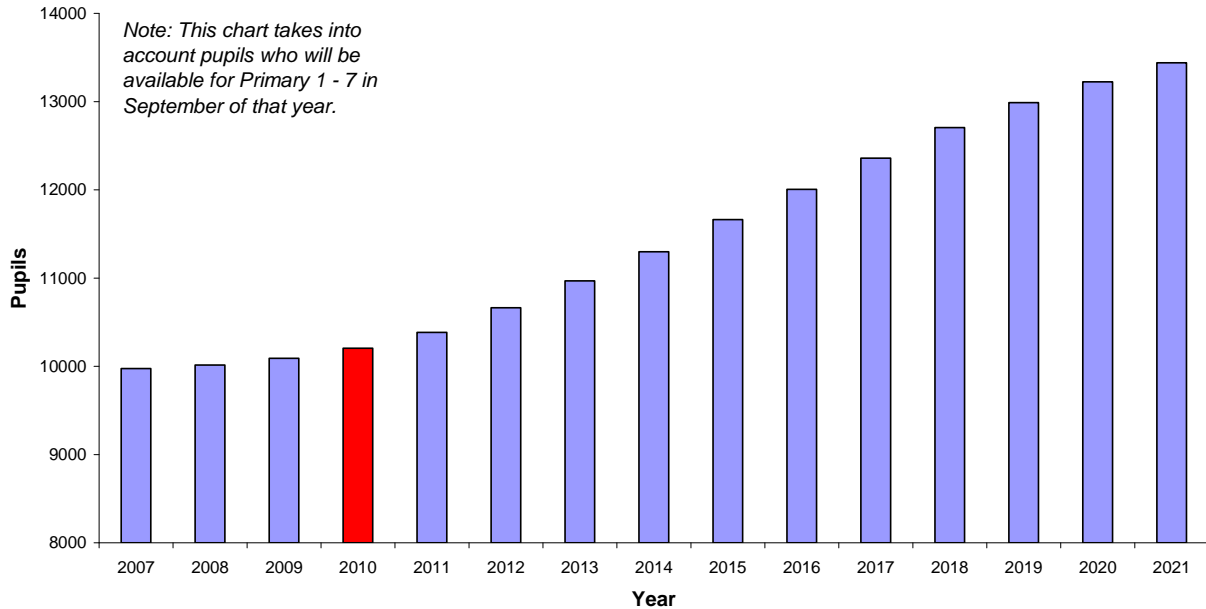
Age	2006	2007	2008	2009	2010	2011	2012	2013	2014	2015	2016	2017	2018	2019	2020	2021	% Change
11	-	1474	1467	1469	1451	1418	1409	1456	1478	1488	1542	1561	1597	1687	1765	1811	22.83%
12	-	1453	1480	1471	1472	1454	1420	1411	1459	1480	1490	1545	1564	1600	1690	1767	21.65%
13	-	1450	1455	1481	1472	1473	1454	1420	1411	1459	1481	1491	1546	1564	1600	1691	16.59%
14	-	1486	1449	1454	1480	1470	1470	1452	1418	1410	1458	1479	1489	1544	1562	1598	7.54%
15	-	1556	1495	1456	1460	1486	1477	1477	1458	1424	1415	1464	1485	1495	1550	1568	0.77%
16	-	1584	1560	1498	1458	1462	1488	1479	1479	1460	1425	1417	1465	1486	1496	1552	-2.02%
17	-	1496	1548	1524	1463	1426	1431	1457	1447	1447	1430	1397	1389	1436	1457	1467	-1.97%
<b>Total</b>	-	<b>10498</b>	<b>10454</b>	<b>10351</b>	<b>10255</b>	<b>10188</b>	<b>10148</b>	<b>10150</b>	<b>10149</b>	<b>10167</b>	<b>10240</b>	<b>10352</b>	<b>10533</b>	<b>10811</b>	<b>11119</b>	<b>11452</b>	<b>9.09%</b>
			-0.42%	-0.98%	-0.93%	-0.66%	-0.39%	0.02%	-0.01%	0.18%	0.72%	1.10%	1.75%	2.64%	2.84%	3.00%	
11 - 15	-	7418	7346	7330	7334	7300	7229	7215	7223	7260	7385	7539	7680	7890	8166	8434	13.69%
			-0.98%	-0.21%	0.05%	-0.46%	-0.97%	-0.19%	0.11%	0.51%	1.72%	2.08%	1.87%	2.73%	3.50%	3.28%	

*Source: Adapted from NISRA figures (www.nisra.gov.uk)*

## PLANNING & DEVELOPMENT

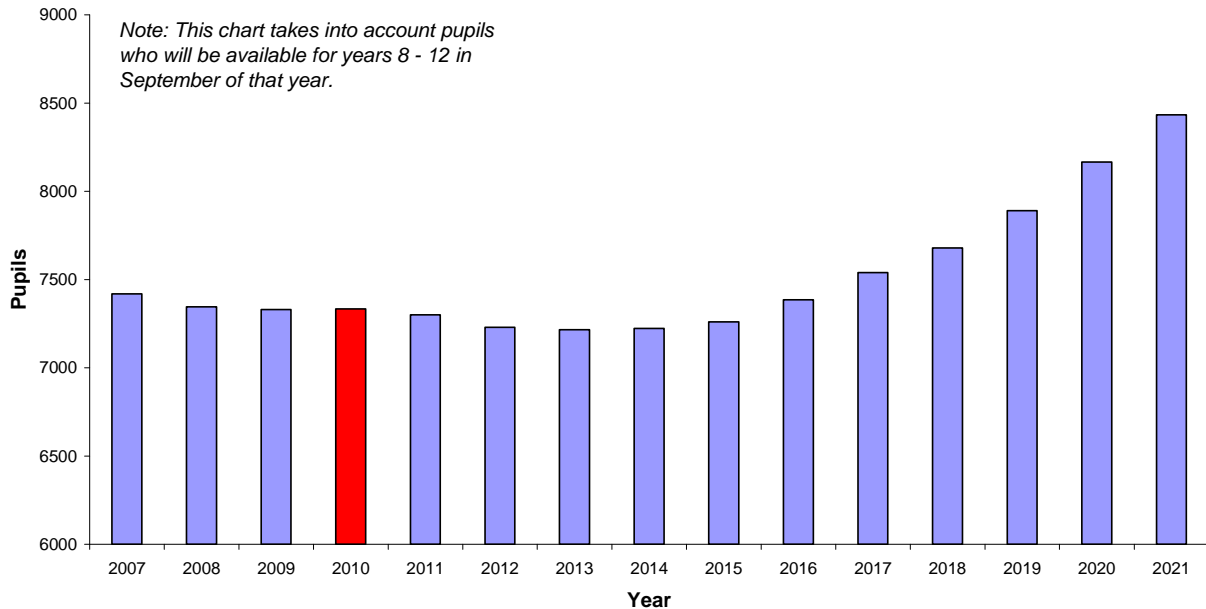
The following two charts, based on the NISRA 2006-based projections, show the pupils who will be available for enrolment in primary and post-primary schools in Newry & Mourne Council Area from 2007 – 2021.

### Newry Available Pupils for Primary Schools (2007 - 2021) based on NISRA 2006-based LGD projections



Source: Based on NISRA figures ([www.nisra.gov.uk](http://www.nisra.gov.uk))

### Newry Available Pupils for Post-Primary Schools (2007 - 2021) based on NISRA 2006-based LGD projections



Source: Based on NISRA figures ([www.nisra.gov.uk](http://www.nisra.gov.uk))