

## Dungannon and South Tyrone Borough Council Area

### Current school provision summary including all school sectors:

#### Pre- School Education

The following table provides a summary of the funded pre-school provision at October 2010 census date in the Dungannon and South Tyrone Borough Council Area:

Sector	Number of groups	Number of funded places October 2010
Pre-school playgroups	19	480
Irish Medium	1	18

#### Nursery Education

The following table provides a summary of funded nursery provision at October 2010 census date in the Dungannon and South Tyrone Borough Council Area:

Sector	Number of groups	Number of funded places October 2010
Controlled	2 Nursery Schools	78
Maintained	1 Nursery School	52
	2 Nursery Units	104
Integrated	1 Nursery Unit	26
Irish Medium	-	-

#### Primary

The following table provides an overview of the primary school provision at October 2010 census date in the Dungannon and South Tyrone Borough Council Area:

Sector	Number of Schools	Number of P1 to P7 excluding Special Units October 2010	Number of P1 to P7 including Special Units October 2010
Controlled	16	1578	1602
Maintained	25	3552	3586
Integrated	1	204	-
Irish Medium	1	143	-

## Post-Primary

The following table provides an overview of the post-primary school provision at October 2010 census date in the Dungannon and South Tyrone Borough Council Area:

Sector	Number of Schools	Number of pupils October 2010
Controlled	3	994
Maintained	3	1771
Integrated	1	487
Vol. Grammar	3	2608
Irish Medium	-	-

## Special Schools

The following table provides an overview of the special school provision at October 2010 census date in the Dungannon and South Tyrone Borough Council Area:

Sector	Number of Schools	Number of pupils October 2010
Controlled	1	87

## School by school enrolment over past nine years

### Total P1 – P7 Actual Enrolment ex Units at October 2010 Census Controlled Schools

DENI	School Name	Total P1-P7									
		Actual Enrolment ex Units at October Census									
Ref No		2002	2003	2004	2005	2006	2007	2008	2009	2010	% Change
501 2659	Clogher Regional Primary	31	28	25	30	24	20	19	17	12	-61.29%
501 2635	Augher Central Primary	42	40	42	33	32	33	37	38	45	7.14%
501 2632	Donaghmore Primary	44	50	45	44	54	52	44	49	49	11.36%
501 2636	Moy Regional Primary	54	50	48	42	36	34	34	39	49	-9.26%
501 2611	Lisfearthy Primary	53	45	52	47	54	45	52	50	50	-5.66%
501 2719	Newmills Primary	74	63	61	62	65	57	63	58	52	-29.73%
501 2538	Churchill Primary	45	54	58	53	57	54	66	66	56	24.44%
501 2657	Walker Memorial Primary	70	61	66	71	68	69	74	85	82	17.14%
501 2696	Carntall Primary	78	78	83	82	86	86	87	78	84	7.69%
501 6643	Richmond Primary		26	92	87	92	96	93	89	85	-7.61%
501 2621	Aughnacloy Regional Primary	108	109	104	97	95	103	99	105	115	6.48%
501 6195	Killyman Primary	85	85	85	85	89	92	109	116	129	51.76%
501 6088	Fivemiletown Primary	171	169	172	165	167	160	162	170	169	-1.17%
501 6391	Bush Primary	169	170	166	171	169	166	172	175	178	5.33%
501 2720	Dungannon Primary	173	186	161	178	222	211	198	188	184	6.36%
501 2646	Howard Primary	241	238	225	217	201	208	217	234	239	-0.83%
501 2629	Tamnamore Primary	46	43	32	29	28	23				see note*
501 2451	Benburb Primary	32	34	37	35	37	22	11			*see note

\*Ballygawley PS and Innishmagh PS amalgamated in January 2004 to become Richmond PS.

\*Tamnamore PS closed 31 August 2008 and amalgamated with Killyman PS. \* Benburb PS closed 30 June 2009

### Other Primary School Sector Provision

DENI		Total P1-P7									
Ref No	School Name	Actual Enrolment ex Units at October Census									
		2002	2003	2004	2005	2006	2007	2008	2009	2010	% Change
503 1080	Clintyclay Primary	37	35	34	30	34	31	30	29	32	-13.51%
503 2736	St Mary's Primary, Fivemiletown	41	38	33	35	36	36	36	39	35	-14.63%
503 2306	St Malachy's Primary, Glencull	52	52	47	40	39	36	34	40	38	-26.92%
503 2727	St Brigid's Primary, Augher	53	45	40	45	44	47	46	42	39	-26.42%
503 6463	St Joseph's Primary, Caledon	41	40	36	36	34	34	32	36	40	-2.44%
503 2592	St Mary's Primary, Lisbuoy	67	67	71	72	68	62	60	49	50	-25.37%
503 2697	St Patrick's Primary, A'adarragh	60	65	61	61	63	61	62	59	60	0.00%
503 2558	Laghey Primary	41	37	44	40	42	49	57	62	62	51.22%
503 2624	St Mac Carten's Convent Primary	84	79	79	83	74	65	66	66	63	-25.00%
503 2729	St John's Primary, Kingsland	102	101	93	87	66	66	72	67	65	-36.27%
503 2714	Aughamullan Primary	50	48	51	54	67	78	85	81	83	66.00%
503 2387	Derrylatinee Primary	88	91	85	86	89	95	96	96	90	2.27%
503 2463	Blessed Patrick O'Loughran	95	90	87	78	83	86	91	94	93	-2.11%
503 6363	St Mary's Primary, Aughnacloy	60	63	66	78	82	88	94	91	93	55.00%
503 2591	Roan Primary	64	67	69	71	74	80	82	87	99	54.69%
503 2735	St Mary's Primary, Ballygawley	94	94	87	88	94	111	108	111	116	23.40%
503 2698	St Brigid's Primary, Mountjoy	125	119	114	114	128	135	129	126	126	0.80%
504 6637	Gaelscoil Ui Neill	84	86	98	103	104	113	126	131	143	70.24%
503 2715	St John's Primary, Moy	180	177	172	182	189	197	189	182	177	-1.67%
503 6033	St Joseph's Primary, Galbally	164	166	176	177	180	179	170	170	180	9.76%
503 2678	St Patrick's Primary, Donaghmore	177	173	164	162	175	176	183	194	192	8.47%
506 6554	Windmill Integrated Primary	196	191	196	199	203	207	207	202	204	4.08%
503 2734	St Mary's Primary, Cabra	168	163	172	176	189	212	217	220	211	25.60%
503 6047	St Patrick's Primary, Annaghmore	218	216	239	224	218	216	216	222	217	-0.46%
503 2585	Edendork Primary	285	287	272	262	249	247	249	259	256	-10.18%
503 6590	Primate Dixon Memorial Primary	491	479	456	457	458	439	413	448	453	-7.74%
503 6504	St Patrick's Primary, Dungannon	506	501	510	538	577	600	631	658	682	34.78%

### Post Primary Schools

	2002	2003	2004	2005	2006	2007	2008	2009	2010
<b>Controlled</b>									
Aughnacloy College	119	145	165	177	187	197	179	176	186
Drumglass High	435	429	416	408	401	369	382	387	
Fivemiletown College	427	414	391	386	371	371	383	412	426
<b>Maintained</b>									
St Ciaran's High	794	760	810	795	783	786	776	779	783
St Joseph's College, Coalisland	523	515	500	504	454	453	414	378	356
St Patrick's College, Dungannon	561	536	553	553	521	547	581	600	632
<b>Voluntary Grammar</b>									
St Joseph's Donaghmore	494	500	500	495	501	515	506	527	555
St Patrick's Academy	1690	1685	1611	1565	1543	1480	1465	1420	1395
Dungannon Royal	651	646	654	654	647	650	656	646	658
<b>Integrated</b>									

Integrated College Dungannon	460	489	486	486	460	462	465	461	487
<b>Special Schools</b>									
Sperrinview School	70	71	69	71	78	83	84	87	87

## Demography

### Births 2000 – 2008 by Wards

	2000	2001	2002	2003	2004	2005	2006	2007	2008	Average
Altmore	28	36	31	23	31	36	40	29	39	<b>33</b>
Augher	19	27	27	18	36	26	24	34	25	<b>26</b>
Aughnacloy	19	38	25	22	22	28	34	33	41	<b>29</b>
Ballygawley	31	30	30	36	34	43	37	35	36	<b>35</b>
Ballysaggart	38	43	26	34	38	41	36	51	54	<b>40</b>
Benburb	26	29	34	37	33	33	48	43	52	<b>37</b>
Caledon	32	25	28	19	34	29	24	29	24	<b>27</b>
Castlecaulfield	43	27	34	25	35	38	30	32	41	<b>34</b>
Clogher	28	30	29	25	29	21	28	29	25	<b>27</b>
Coalisland North	50	48	62	51	59	50	60	65	62	<b>56</b>
Coalisland South	37	47	35	35	49	55	41	42	58	<b>44</b>
Coalisland West & Newmills	30	44	39	52	46	42	38	50	48	<b>43</b>
Coolhill	36	28	38	27	42	40	53	47	47	<b>40</b>
Donaghmore	17	38	28	25	30	32	30	34	43	<b>31</b>
Drumglass	20	26	20	20	28	30	29	40	38	<b>28</b>
Fivemiletown	21	26	29	19	21	24	29	23	25	<b>24</b>
Killyman	27	19	27	18	30	32	30	43	44	<b>30</b>
Killymeal	24	16	22	37	38	35	44	40	45	<b>33</b>
Moy	28	48	35	34	48	43	46	62	47	<b>43</b>
Moygashel	22	33	26	21	25	23	32	33	30	<b>27</b>
Mullaghmore	20	29	37	32	31	30	37	39	39	<b>33</b>
Washing Bay	33	50	45	40	44	29	31	43	47	<b>40</b>

Source: Adapted from NINIS figures ([www.ninis.nisra.gov.uk](http://www.ninis.nisra.gov.uk))

**Religious Make-up of Area by Ward  
2001 Census**

Wards	Catholic				Other Than Catholic			
	All Ages	11 to Under 18	4 to Under 11	Birth to Under 4	All Ages	11 to Under 18	4 to Under 11	Birth to Under 4
<b>Altmore</b>	79.32%	83.67%	84.27%	74.47%	20.68%	16.33%	15.73%	25.53%
<b>Augher</b>	55.18%	67.66%	62.77%	50.00%	44.82%	32.34%	37.23%	50.00%
<b>Aughnacloy</b>	26.33%	31.93%	25.22%	23.89%	73.67%	68.07%	74.78%	76.11%
<b>Ballygawley</b>	69.81%	71.57%	71.49%	75.95%	30.19%	28.43%	28.51%	24.05%
<b>Ballysaggart</b>	73.56%	82.54%	71.62%	61.54%	26.44%	17.46%	28.38%	38.46%
<b>Benburb</b>	49.80%	51.27%	51.47%	58.41%	50.20%	48.73%	48.53%	41.59%
<b>Caledon</b>	44.76%	55.24%	55.51%	52.85%	55.24%	44.76%	44.49%	47.15%
<b>Castlecaulfield</b>	52.55%	59.81%	60.62%	52.27%	47.45%	40.19%	39.38%	47.73%
<b>Clogher</b>	57.39%	67.52%	71.29%	53.23%	42.61%	32.48%	28.71%	46.77%
<b>Coalisland North</b>	93.84%	95.60%	96.97%	93.05%	6.16%	4.40%	3.03%	6.95%
<b>Coalisland South</b>	87.71%	88.99%	86.12%	85.35%	12.29%	11.01%	13.88%	14.65%
<b>Coalisland West &amp; Newmills</b>	68.88%	78.21%	73.62%	57.03%	31.12%	21.79%	26.38%	42.97%
<b>Coolhill</b>	19.20%	17.47%	15.38%	23.94%	80.80%	82.53%	84.62%	76.06%
<b>Donaghmore</b>	67.65%	70.70%	70.99%	74.80%	32.35%	29.30%	29.01%	25.20%
<b>Drumglass</b>	80.48%	82.94%	84.62%	82.83%	19.52%	17.06%	15.38%	17.17%
<b>Fivemiletown</b>	18.60%	20.21%	13.90%	16.49%	81.40%	79.79%	86.10%	83.51%
<b>Killyman</b>	13.25%	20.49%	13.73%	10.78%	86.75%	79.51%	86.27%	89.22%
<b>Killymeal</b>	38.86%	47.20%	38.36%	38.64%	61.14%	52.80%	61.64%	61.36%
<b>Moy</b>	54.79%	55.82%	68.42%	74.00%	45.21%	44.18%	31.58%	26.00%
<b>Moygashel</b>	15.00%	18.42%	18.93%	23.85%	85.00%	81.58%	81.07%	76.15%
<b>Mullaghmore</b>	83.27%	95.41%	85.19%	81.58%	16.73%	4.59%	14.81%	18.42%
<b>Washing Bay</b>	92.23%	94.68%	90.85%	84.35%	7.77%	5.32%	9.15%	15.65%

Source: Adapted from NISRA figures ([www.nisra.gov.uk](http://www.nisra.gov.uk))

## Dungannon & South Tyrone Borough Council Live Births: 1974 - 2010

Year	Live births DUNGANNON
1974	940
1975	924
1976	986
1977	874
1978	932
1979	951
1980	988
1981	950
1982	928
1983	998
1984	933
1985	967

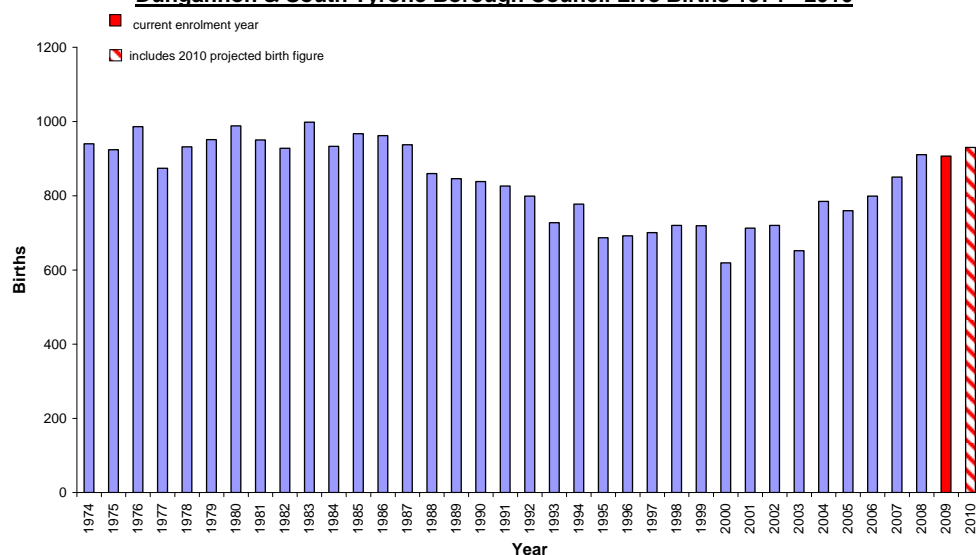
Year	Live births DUNGANNON
1986	962
1987	937
1988	860
1989	846
1990	838
1991	826
1992	799
1993	727
1994	777
1995	687
1996	692
1997	701

Year	Live births DUNGANNON
1998	720
1999	719
2000	619
2001	713
2002	720
2003	652
2004	785
2005	760
2006	799
2007	850
2008	911
2009	907
2010*	<b>930</b>

Source: Adapted from NISRA figures ([www.nisra.gov.uk](http://www.nisra.gov.uk))

\*Note that 2010 births are provisional from NISRA – Statistics Press Notice – Births in Northern Ireland (2010)

### Dungannon & South Tyrone Borough Council Live Births 1974 - 2010



\*Includes 2010

projected birth figure

Source: Adapted from NISRA figures ([www.nisra.gov.uk](http://www.nisra.gov.uk))

### DUNGANNON Available Pupils for Primary School 1985 - 2014

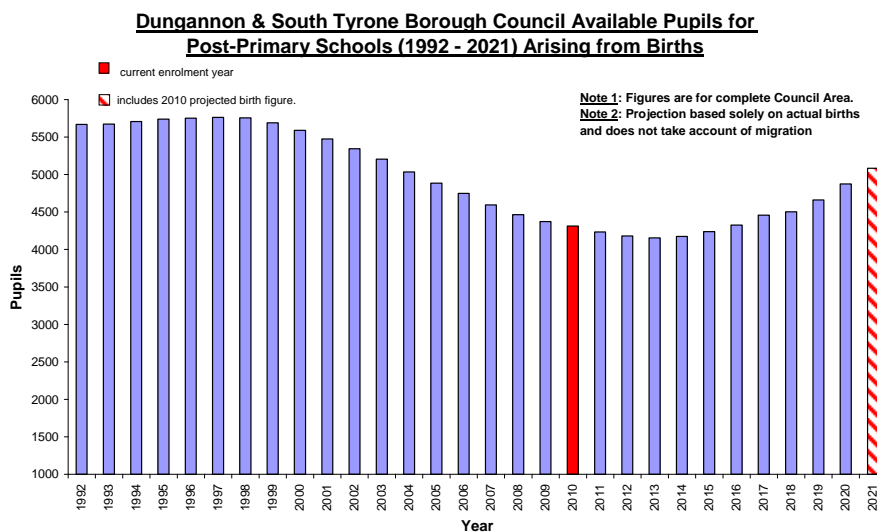
YEAR	P7	P6	P5	P4	P3	P2	P1	TOTAL
1985	932	955	930	903	942	970	969	<b>6600</b>
1986	955	930	903	942	970	969	939	<b>6607</b>
1987	930	903	942	970	969	939	963	<b>6615</b>
1988	903	942	970	969	939	963	966	<b>6651</b>
1989	942	970	969	939	963	966	950	<b>6698</b>
1990	970	969	939	963	966	950	965	<b>6721</b>
1991	969	939	963	966	950	965	950	<b>6701</b>



<b>1992</b>	438	516	930	903	942	970	969	<b>5667</b>
<b>1993</b>	449	502	903	942	970	969	939	<b>5673</b>
<b>1994</b>	437	488	942	970	969	939	963	<b>5707</b>
<b>1995</b>	424	508	970	969	939	963	966	<b>5739</b>
<b>1996</b>	443	524	969	939	963	966	950	<b>5753</b>
<b>1997</b>	456	523	939	963	966	950	965	<b>5761</b>
<b>1998</b>	455	507	963	966	950	965	950	<b>5755</b>
<b>1999</b>	441	520	966	950	965	950	899	<b>5689</b>
<b>2000</b>	453	521	950	965	950	899	853	<b>5589</b>
<b>2001</b>	454	513	965	950	899	853	842	<b>5474</b>
<b>2002</b>	447	521	950	899	853	842	832	<b>5342</b>
<b>2003</b>	453	513	899	853	842	832	813	<b>5204</b>
<b>2004</b>	446	485	853	842	832	813	763	<b>5034</b>
<b>2005</b>	422	461	842	832	813	763	752	<b>4884</b>
<b>2006</b>	401	455	832	813	763	752	732	<b>4747</b>
<b>2007</b>	396	449	813	763	752	732	690	<b>4594</b>
<b>2008</b>	391	439	763	752	732	690	697	<b>4463</b>
<b>2009</b>	382	412	752	732	690	697	711	<b>4374</b>
<b>2010</b>	359	406	732	690	697	711	720	<b>4313</b>
<b>2011</b>	353	395	690	697	711	720	669	<b>4234</b>
<b>2012</b>	344	372	697	711	720	669	670	<b>4181</b>
<b>2013</b>	324	376	711	720	669	670	686	<b>4155</b>
<b>2014</b>	327	384	720	669	670	686	719	<b>4174</b>
<b>2015</b>	334	389	669	670	686	719	773	<b>4238</b>
<b>2016</b>	338	361	670	686	719	773	780	<b>4325</b>
<b>2017</b>	314	362	686	719	773	780	825	<b>4457</b>
<b>2018</b>	337	387	686	719	773	780	825	<b>4504</b>
<b>2019</b>	315	370	719	773	780	825	881	<b>4661</b>
<b>2020</b>	321	388	773	780	825	881	909	<b>4875</b>
<b>2021</b>	354	417	780	825	881	909	919	<b>5083</b>

Source: Based on NISRA figures ([www.nisra.gov.uk](http://www.nisra.gov.uk))

These figures represent the children who would be available in the designated post-primary class in any particular year arising from the births. These figures do not include migrants or other changes such as new housing in the area.

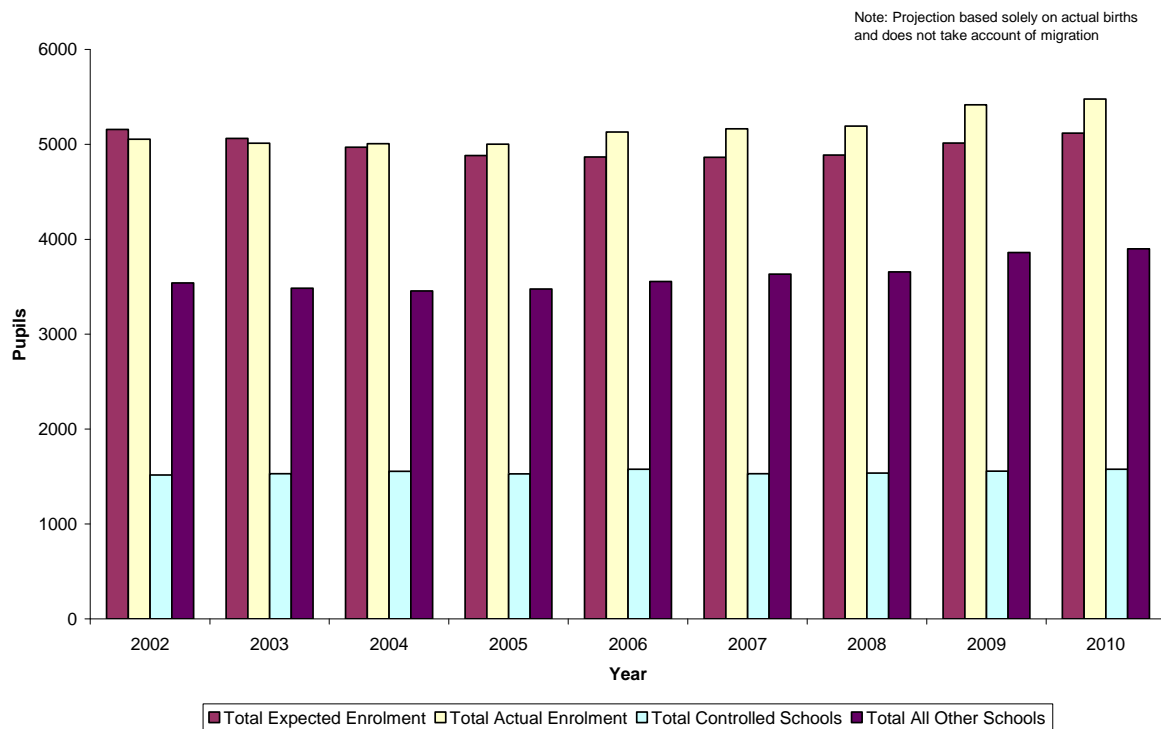


Source: Based on NISRA figures ([www.nisra.gov.uk](http://www.nisra.gov.uk))

## Projected enrolment based on actual births Vs Actual Enrolments 2002 - 2010

Dungannon	2002	2003	2004	2005	2006	2007	2008	2009	2010
<b>Total Expected Enrolment</b>	5156	5063	4969	4883	4868	4864	4886	5015	5120
<b>Total Actual Enrolment</b>	5055	5013	5008	5003	5131	5164	5192	5418	5477
<b>Total Controlled Schools</b>	1516	1529	1554	1528	1576	1531	1537	1557	1578
<b>Total All Other Schools</b>	3539	3484	3454	3475	3555	3633	3655	3861	3899

**Projected Based on Actual Births Vs Actual Enrolment for Primary Schools in Dungannon  
DCA**



NOTE: We have not included a comparison chart for post-primary as pupils for post-primary schools come from across the district council boundaries. While there may be some transfers across council boundaries in the primary sector, these are of a more limited nature and are statistically less significant.

### Pre-School Age Population Projections in Dungannon from NISRA 2006-based LGD projections

Age	2006	2007	2008	2009	2010	2011	2012	2013	2014	2015	2016	2017	2018	2019	2020	2021	% Change
0	777	830	882	919	952	982	1,005	1,023	1,044	1,069	1,092	1,114	1,134	1,150	1,162	1,170	50.58%
1	833	803	849	902	938	971	1,000	1,023	1,041	1,063	1,087	1,110	1,132	1,153	1,169	1,181	41.78%
2	743	840	805	849	901	938	971	1,000	1,022	1,041	1,063	1,088	1,111	1,133	1,153	1,170	57.47%
3	681	752	844	809	852	906	941	974	1,003	1,027	1,045	1,066	1,091	1,115	1,136	1,157	69.90%
<b>Total</b>	<b>3,034</b>	<b>3,225</b>	<b>3,380</b>	<b>3,479</b>	<b>3,643</b>	<b>3,797</b>	<b>3,917</b>	<b>4,020</b>	<b>4,110</b>	<b>4,200</b>	<b>4,287</b>	<b>4,378</b>	<b>4,468</b>	<b>4,551</b>	<b>4,620</b>	<b>4,678</b>	<b>54.19%</b>
		<b>6.30%</b>	<b>4.81%</b>	<b>2.93%</b>	<b>4.71%</b>	<b>4.23%</b>	<b>3.16%</b>	<b>2.63%</b>	<b>2.24%</b>	<b>2.19%</b>	<b>2.07%</b>	<b>2.12%</b>	<b>2.06%</b>	<b>1.86%</b>	<b>1.52%</b>	<b>1.26%</b>	

Source: Adapted from NISRA figures ([www.nisra.gov.uk](http://www.nisra.gov.uk))

The following table shows the 3-year olds who will be available for pre-school enrolment in Dungannon & South Tyrone Borough Council Area from 2007 – 2021. The figures are calculated by adding 50% of the projected 3-year olds from two subsequent years (e.g. 2007 figures are calculated by adding 50% of 2006 and 50% of 2007).

Age	2006	2007	2008	2009	2010	2011	2012	2013	2014	2015	2016	2017	2018	2019	2020	2021	% Change
3	-	804	856	901	936	967	994	1014	1034	1057	1081	1103	1124	1142	1156	1166	45.12%
			<b>6.53%</b>	<b>5.20%</b>	<b>3.89%</b>	<b>3.37%</b>	<b>2.74%</b>	<b>2.06%</b>	<b>1.92%</b>	<b>2.23%</b>	<b>2.27%</b>	<b>2.08%</b>	<b>1.90%</b>	<b>1.60%</b>	<b>1.23%</b>	<b>0.87%</b>	

Source: Adapted from NISRA figures ([www.nisra.gov.uk](http://www.nisra.gov.uk))

### Primary School Age Population Projections in Dungannon from NISRA 2006-based LGD projections

Age	2006	2007	2008	2009	2010	2011	2012	2013	2014	2015	2016	2017	2018	2019	2020	2021	% Change
4	758	691	759	851	814	858	912	947	980	1,010	1,033	1,051	1,072	1,098	1,121	1,144	50.92%
5	667	775	699	769	861	825	869	921	958	991	1,020	1,043	1,062	1,084	1,109	1,132	69.72%
6	751	683	789	712	782	874	836	881	935	970	1,005	1,034	1,057	1,075	1,097	1,123	49.53%
7	750	743	676	780	705	773	865	828	872	925	962	995	1,024	1,048	1,067	1,088	45.07%
8	736	767	756	686	791	715	783	876	839	883	936	973	1,007	1,036	1,059	1,079	46.60%
9	783	752	778	767	696	802	723	793	887	849	894	948	985	1,018	1,048	1,072	36.91%
10	750	802	766	792	780	708	814	734	804	900	861	907	960	998	1,032	1,062	41.60%
<b>Total</b>	<b>5,195</b>	<b>5,213</b>	<b>5,223</b>	<b>5,357</b>	<b>5,429</b>	<b>5,555</b>	<b>5,802</b>	<b>5,980</b>	<b>6,275</b>	<b>6,528</b>	<b>6,711</b>	<b>6,951</b>	<b>7,167</b>	<b>7,357</b>	<b>7,533</b>	<b>7,700</b>	<b>48.22%</b>
		0.35%	0.19%	2.57%	1.34%	2.32%	4.45%	3.07%	4.93%	4.03%	2.80%	3.58%	3.11%	2.65%	2.39%	2.22%	

Source: Adapted from NISRA figures ([www.nisra.gov.uk](http://www.nisra.gov.uk))

The following table shows the primary school aged children who will be available for primary school enrolment in Dungannon & South Tyrone Borough Council Area from 2007 – 2021. The figures are calculated by adding 50% of the projected children from two subsequent years (e.g. 2007 figures for 4 year olds are calculated by adding 50% of 4 year olds in 2006 and 50% of 4 year olds in 2007).

Age	2006	2007	2008	2009	2010	2011	2012	2013	2014	2015	2016	2017	2018	2019	2020	2021	% Change
4	-	725	725	805	833	836	885	930	964	995	1022	1042	1062	1085	1110	1133	56.31%
5	-	721	737	734	815	843	847	895	940	975	1006	1032	1053	1073	1097	1121	55.41%
6	-	717	736	751	747	828	855	859	908	953	988	1020	1046	1066	1086	1110	54.81%
7	-	747	710	728	743	739	819	847	850	899	944	979	1010	1036	1058	1078	44.34%
8	-	752	762	721	739	753	749	830	858	861	910	955	990	1022	1048	1069	42.25%
9	-	768	765	773	732	749	763	758	840	868	872	921	967	1002	1033	1060	38.11%
10	-	776	784	779	786	744	761	774	769	852	881	884	934	979	1015	1047	34.92%
<b>Total</b>	-	<b>5204</b>	<b>5218</b>	<b>5290</b>	<b>5393</b>	<b>5492</b>	<b>5679</b>	<b>5891</b>	<b>6128</b>	<b>6402</b>	<b>6620</b>	<b>6831</b>	<b>7059</b>	<b>7262</b>	<b>7445</b>	<b>7617</b>	<b>46.36%</b>
			0.27%	1.38%	1.95%	1.84%	3.40%	3.74%	4.01%	4.47%	3.41%	3.20%	3.34%	2.88%	2.52%	2.30%	

Source: Adapted from NISRA figures ([www.nisra.gov.uk](http://www.nisra.gov.uk))

### Post-Primary School Age Population Projections in Dungannon from NISRA 2006-based LGD projections

Age	2006	2007	2008	2009	2010	2011	2012	2013	2014	2015	2016	2017	2018	2019	2020	2021	% Change
11	741	761	811	774	799	786	713	821	739	811	907	868	913	967	1,005	1,039	40.22%
12	790	748	765	815	778	801	788	716	824	741	813	911	871	916	971	1,008	27.59%
13	795	791	748	765	814	777	800	787	715	823	740	812	910	870	915	970	22.01%
14	827	809	800	756	772	821	783	807	795	722	829	746	820	916	876	922	11.49%
15	864	838	815	807	761	777	828	788	812	800	726	835	751	825	923	882	2.08%
16	850	876	846	822	813	767	784	833	794	819	805	731	841	757	830	928	9.18%
17	796	858	877	846	823	814	769	785	834	796	820	807	732	842	757	831	4.40%
<b>Total</b>	<b>5,663</b>	<b>5,681</b>	<b>5,662</b>	<b>5,585</b>	<b>5,560</b>	<b>5,543</b>	<b>5,465</b>	<b>5,537</b>	<b>5,513</b>	<b>5,512</b>	<b>5,640</b>	<b>5,710</b>	<b>5,838</b>	<b>6,093</b>	<b>6,277</b>	<b>6,580</b>	<b>16.19%</b>
		0.32%	-0.33%	-1.36%	-0.45%	-0.31%	-1.41%	1.32%	-0.43%	-0.02%	2.32%	1.24%	2.24%	4.37%	3.02%	4.83%	

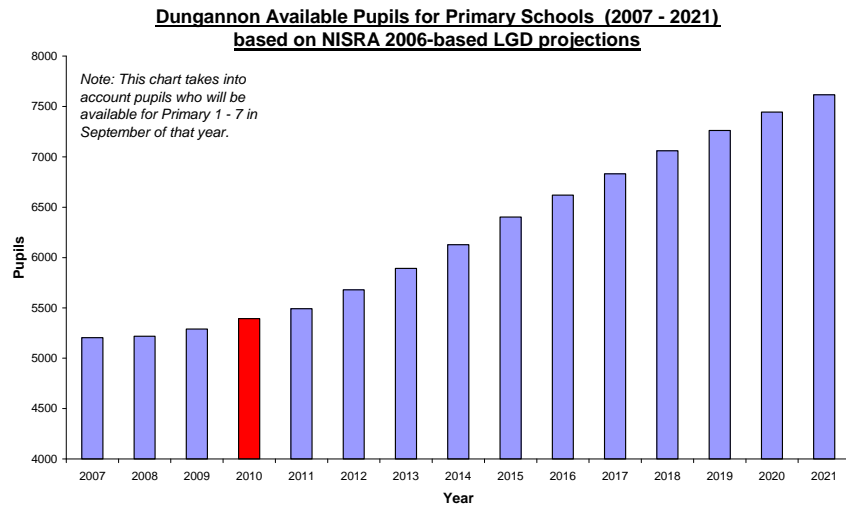
Source: Adapted from NISRA figures (www.nisra.gov.uk)

The following table shows the post-primary school aged children who will be available for post-primary school enrolment in Dungannon & South Tyrone Borough Council Area from 2007 – 2021. The figures are calculated by adding 50% of the projected children from two subsequent years (e.g. 2007 figures for 11 year olds are calculated by adding 50% of 11 year olds in 2006 and 50% of 11 year olds in 2007).

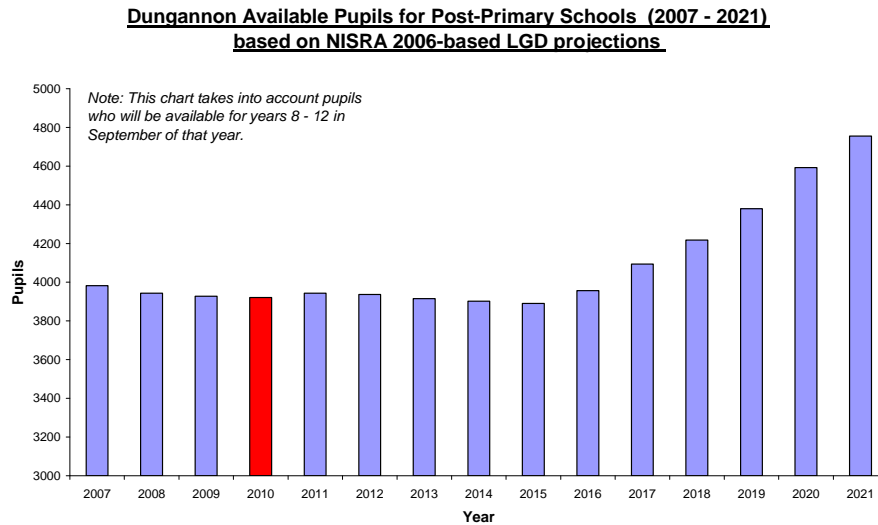
Age	2006	2007	2008	2009	2010	2011	2012	2013	2014	2015	2016	2017	2018	2019	2020	2021	% Change
11	-	751	786	793	787	793	750	767	780	775	859	888	891	940	986	1022	36.09%
12	-	769	757	790	797	790	795	752	770	783	777	862	891	894	944	990	28.67%
13	-	793	770	757	790	796	789	794	751	769	782	776	861	890	893	943	18.85%
14	-	818	805	778	764	797	802	795	801	759	776	788	783	868	896	899	9.90%
15	-	851	827	811	784	769	803	808	800	806	763	781	793	788	874	903	6.05%
16	-	863	861	834	818	790	776	809	814	807	812	768	786	799	794	879	1.85%
17	-	827	868	862	835	819	792	777	810	815	808	814	770	787	800	794	-3.99%
<b>Total</b>	-	<b>5672</b>	<b>5672</b>	<b>5624</b>	<b>5573</b>	<b>5552</b>	<b>5504</b>	<b>5501</b>	<b>5525</b>	<b>5513</b>	<b>5576</b>	<b>5675</b>	<b>5774</b>	<b>5966</b>	<b>6185</b>	<b>6429</b>	<b>13.34%</b>
			-0.01%	-0.85%	-0.91%	-0.38%	-0.86%	-0.05%	0.44%	-0.23%	1.15%	1.78%	1.74%	3.32%	3.68%	3.94%	
11 - 15	-	3982	3943	3928	3921	3943	3937	3916	3902	3891	3956	4094	4219	4380	4592	4756	19.42%
			-0.98%	-0.38%	-0.19%	0.57%	-0.15%	-0.55%	-0.34%	-0.28%	1.67%	3.48%	3.05%	3.82%	4.85%	3.56%	

Source: Adapted from NISRA figures (www.nisra.gov.uk)

The following two charts, based on the NISRA 2006-based projections, show the pupils who will available for enrolment in primary and post-primary schools in Dungannon & South Tyrone Borough Council Area from 2007 – 2021.



Source: Based on NISRA figures ([www.nisra.gov.uk](http://www.nisra.gov.uk))



Source: Based on NISRA figures ([www.nisra.gov.uk](http://www.nisra.gov.uk))