

Armagh City and District Council Area

Current school provision summary including all school sectors:

Pre- School Education

The following table provides a summary of the funded pre-school provision at October 2010 census date in the Armagh City and District Council Area:

Sector	Number of groups	Number of funded places October 2010
Pre-school playgroups	16	301
Irish Medium	-	-

Nursery Education

The following table provides a summary of funded nursery provision at October 2010 census date in the Armagh City and District Council Area:

Sector	Number of schools/units	Number of funded places October 2010
Controlled	3 nursery schools	158
	1 nursery unit	52
Maintained	1 nursery school	52
	3 nursery units	78
Integrated	1 Nursery unit	26

Primary

The following table provides an overview of the primary school provision at October 2010 census date in the Armagh City and District Council Area:

Sector	Number of Schools	Number of P1 to P7 excluding Special Units October 2010	Number of P1 to P7 including Special Units October 2010
Controlled	20	2531	2551
Maintained	20	2668	2678
Integrated	1	209	
Irish Medium	-	-	-

Post-Primary

The following table provides an overview of the post-primary school provision at October 2010 census date in the Armagh City and District Council Area:

Sector	Number of Schools	Number of pupils October 2010
Controlled	3	980
Maintained	3	2418
Integrated	-	
Vol. Grammar	2	1485
Irish Medium	-	-

Special Schools

The following table provides an overview of the special school provision at October 2010 census date in the Armagh City and District Council Area:

Sector	Number of Schools	Number of pupils October 2010
Controlled	1	99

School by school enrolment over past nine years

Total P1 – P7 Actual Enrolment ex Units at October 2010 Census

Controlled Schools

DENI	School Name	Total P1-P7									
		Actual Enrolment ex Units at October Census									
Ref No		2002	2003	2004	2005	2006	2007	2008	2009	2010	% Change
501 1034	Aghavilly Primary	74	68	66	54	42	32	28	22	19	-74.32%
501 6028	Keady Primary	41	37	38	33	27	26	20	19	19	-53.66%
501 1117	Drumsallen Primary	62	67	75	56	46	60	57	51	42	-32.26%
501 0909	Foley Primary	119	114	112	100	83	77	71	66	56	-52.94%
501 1132	Killylea Primary	57	49	51	54	53	55	52	57	64	12.28%
501 6027	Drumhillery Primary	63	68	61	66	64	63	69	63	66	4.76%
501 1153	Lisnadill Primary	91	85	89	89	75	79	74	79	73	-19.78%
501 1161	Mountnorris Primary	81	83	85	81	81	81	83	86	76	-6.17%
501 1157	Derryhale Primary	60	57	54	60	62	69	67	71	82	36.67%
501 1119	Darkley Primary	118	107	92	79	85	85	81	85	86	-27.12%
501 1095	Mullavilly Primary	98	103	98	97	92	88	98	99	89	-9.18%
501 6078	Poyntzpass Primary	61	77	81	87	88	85	99	100	102	67.21%
501 6658	Orchard County Primary					88	93	100	101	108	22.73%
501 6179	Hamiltonsbawn Primary	127	134	135	139	120	120	124	127	122	-3.94%
501 6079	The Cope Primary	172	157	144	146	137	133	123	124	124	-27.91%
501 1142	Clare Primary	88	81	76	87	90	102	108	116	134	52.27%
501 6436	Markethill Primary	233	243	238	241	256	265	287	286	286	22.75%
501 1116	Tandragee Primary	297	306	291	295	310	320	314	303	314	5.72%
501 1112	Hardy Memorial Primary	452	431	430	397	373	371	352	336	318	-29.65%

501 1115	The Armstrong Primary	310	267	277	283	273	285	290	341	351	13.23%
501 0988	Collone Primary	39	36	31	33	27	24				*see note

*Orchard County opened in 2006 after Tullyroan and Annaghmore amalgamated.

*Collone Primary School closed 31 August 2008.

Other Primary School Sector Provision

DENI		Total P1-P7									
Ref No	School Name	Actual Enrolment ex Units at October Census									
		2002	2003	2004	2005	2006	2007	2008	2009	2010	% Change
503 1167	St James' Primary, Drumatee	44	43	30	30	26	25	29	27	19	-56.82%
504 6241	The Drelincourt Primary	18	17	27	28	30	23	19	15	21	16.67%
503 0958	St John's Primary, Eglisli	45	38	37	31	30	30	25	24	31	-31.11%
503 1166	St Michael's Primary, Clady	54	57	58	55	54	52	53	51	46	-14.81%
503 1108	Clea Primary	66	65	67	67	68	72	69	69	70	6.06%
503 6180	St Oliver Plunkett's Primary, B'hegan	107	109	106	100	96	94	89	89	81	-24.30%
503 1171	St Joseph & St James' Primary, P'pass*						114	112	112	108	-5.26%
503 1138	St Joseph's Primary, Madden	117	111	104	112	119	116	110	118	116	-0.85%
503 6598	Our Lady's Primary, Tullysaran	123	127	132	132	137	133	122	122	120	-2.44%
503 6622	St John's Primary, Middletown	119	119	118	120	115	124	123	119	123	3.36%
503 6595	St Peter's Primary, Collegelands	94	104	117	118	125	123	125	131	132	40.43%
503 1172	St Mary's Primary, Granemore	123	122	119	123	126	128	140	148	147	19.51%
503 6121	St Jarlath's Primary	147	147	155	154	158	133	154	152	151	2.72%
503 6610	St Francis' of Assisi Primary	237	230	237	243	226	226	208	182	164	-30.80%
503 6639	Our Lady's and St Mochua's**		129	137	143	152	163	170	172	177	37.21%
503 1133	St Malachy's Primary, Armagh	200	193	197	201	185	198	195	192	196	-2.00%
503 1126	Mount St Catherine's Primary	218	208	197	199	184	208	201	204	209	-4.13%
506 6578	Saints and Scholars Primary School	200	216	216	247	247	247	232	226	209	4.50%
503 1110	Armagh Christian Brothers'	330	311	301	298	288	307	315	322	340	3.03%
503 1183	St Patrick's Primary, Armagh	432	455	446	428	441	438	434	431	417	-3.47%
503 1155	St Colmcille's Primary, Armagh	46	36	28	28	29	24	15	Closed		

*St Joseph & St James Primary School opened after St Joseph's Poyntzpass Primary School and St James' Tandragee Primary School amalgamated in 2007.

**Our Lady's and St. Mochua's Primary School opened after Our Lady's Carrickaduff Primary School and St. Mochua's Primary School amalgamated in 2003.

Post Primary Schools

	2002	2003	2004	2005	2006	2007	2008	2009	2010
Controlled									
Markethill High	478	481	471	472	451	455	469	473	483
City of Armagh High	440	412	397	373	369	316	290	278	245
Tandragee Junior High	270	263	252	237	234	227	249	251	252
Maintained									
St Brigid's Boys' High	314	323	302	280	233	233	207	216	218
St Catherine's College	990	1032	1017	1036	1039	1076	1087	1125	1155
St Patrick's High, Keady	1023	1035	1026	1041	1040	1022	1022	1004	1045
Voluntary Grammar									
St Patrick's Grammar School	750	750	750	780	772	750	796	783	803

Armagh Royal	682	679	666	659	654	657	684	679	682
Integrated									
Armagh Integrated College	-	-	50	107	153	140	61	Closed	Closed
Special Schools	2002	2003	2004	2005	2006	2007	2008	2009	2010
Lisanally School	95	95	102	96	94	94	96	99	99

Demography

Births 2000 – 2008 by Wards

	2000	2001	2002	2003	2004	2005	2006	2007	2008	Average
Abbey Park	31	36	29	37	37	40	44	39	44	37
Ballymartrim	16	38	28	27	26	26	24	42	35	29
Callan Bridge	46	37	33	37	30	43	37	50	62	42
Carrigatuke	22	38	39	39	25	34	42	42	30	35
Charlemount	35	42	29	29	28	34	28	30	42	33
Demesne	44	34	41	37	40	49	44	40	36	41
Derrynoose	62	55	61	52	45	55	67	63	55	57
Downs	45	37	42	42	40	48	42	47	46	43
Hamiltonsbawn	31	37	44	43	28	56	58	42	41	42
Hockley	21	16	23	22	26	24	23	34	21	23
Keady	35	23	30	18	28	32	23	34	30	28
Killeen	18	34	33	45	44	45	29	44	35	36
Killylea	28	35	27	29	33	30	31	32	45	32
Laurelvale	26	39	35	42	49	45	56	56	50	44
Loughgall	22	27	23	29	35	31	55	33	49	34
Markethill	30	23	33	31	37	35	45	41	42	35
Milford	20	22	20	28	26	17	39	38	47	29
Observatory	27	23	27	28	28	26	35	29	32	28
Poyntzpass	29	32	23	25	39	46	35	46	37	35
Rich Hill	36	34	38	36	31	29	39	29	39	35
Tandragee	38	29	41	64	33	39	38	34	40	40
The Mall	27	22	15	23	20	23	21	17	26	22

Source: Adapted from NINIS figures (www.ninis.nisra.gov.uk)

**Religious Make-up of Area by Ward
2001 Census**

Ward	Catholic				Other Than Catholic			
	All Ages	11 to Under 18	4 to Under 11	Birth to Under 4	All Ages	11 to Under 18	4 to Under 11	Birth to Under 4
Abbey	86.89%	95.34%	94.88%	82.31%	13.11%	4.66%	5.12%	17.69%
Ballymartrim	63.71%	71.60%	65.97%	61.59%	36.29%	28.40%	34.03%	38.41%
Callan Bridge	77.84%	83.67%	76.41%	66.86%	22.16%	16.33%	23.59%	33.14%
Carrigatuke	70.55%	84.76%	69.93%	65.89%	29.45%	15.24%	30.07%	34.11%
Charlemont	64.07%	69.17%	63.94%	69.33%	35.93%	30.83%	36.06%	30.67%
Demesne	47.46%	56.52%	51.25%	57.71%	52.54%	43.48%	48.75%	42.29%
Derrynoose	80.82%	84.77%	83.20%	76.89%	19.18%	15.23%	16.80%	23.11%
Downs	90.67%	90.39%	89.23%	85.17%	9.33%	9.61%	10.77%	14.83%
Hamiltonsbawn	6.64%	7.57%	6.90%	6.17%	93.36%	92.43%	93.10%	93.83%
Hockley	14.82%	19.92%	20.94%	16.67%	85.18%	80.08%	79.06%	83.33%
Keady	86.35%	87.55%	87.50%	72.82%	13.65%	12.45%	12.50%	27.18%
Killeen	44.43%	43.90%	56.00%	51.15%	55.57%	56.10%	44.00%	48.85%
Killylea	49.78%	61.21%	53.18%	43.38%	50.22%	38.79%	46.82%	56.62%
Laurelvale	7.95%	8.33%	5.04%	1.92%	92.05%	91.67%	94.96%	98.08%
Loughgall	34.73%	46.43%	38.57%	28.47%	65.27%	53.57%	61.43%	71.53%
Markethill	14.55%	15.36%	17.15%	9.72%	85.45%	84.64%	82.85%	90.28%
Milford	60.05%	73.15%	58.30%	47.90%	39.95%	26.85%	41.70%	52.10%
Observatory	50.87%	57.14%	56.96%	50.98%	49.13%	42.86%	43.04%	49.02%
Poyntz Pass	24.86%	25.62%	20.87%	19.84%	75.14%	74.38%	79.13%	80.16%
Rich Hill	1.76%	0.00%	0.89%	0.00%	98.24%	100.00%	99.11%	100.00%
Tandragee	10.63%	11.59%	9.69%	5.70%	89.37%	88.41%	90.31%	94.30%
The Mall	15.09%	19.91%	13.75%	6.90%	84.91%	80.09%	86.25%	93.10%

Source: Adapted from NISRA figures (www.nisra.gov.uk)

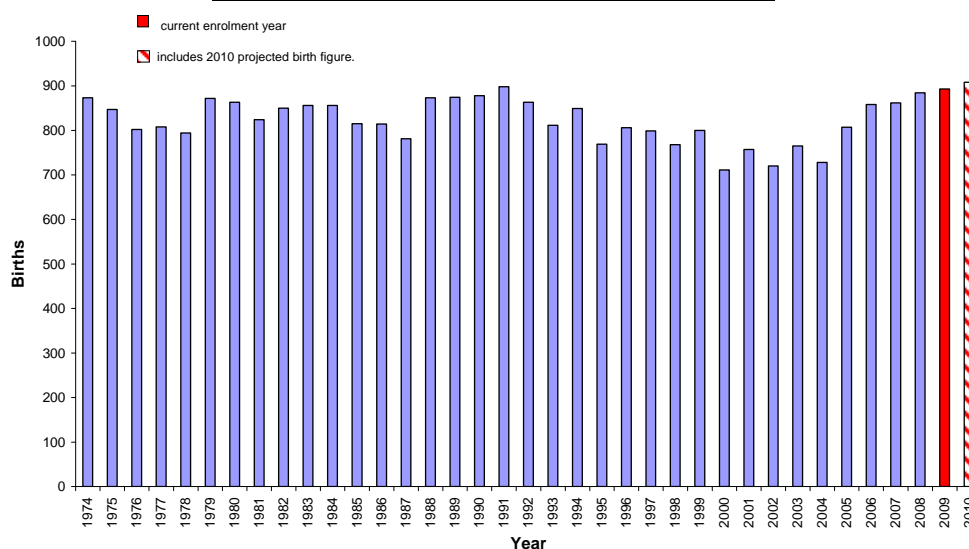
Armagh Live Births – 1974 – 2010

Year	Live births ARMAGH	Year	Live births ARMAGH	Year	Live births ARMAGH
1974	873	1986	814	1998	768
1975	847	1987	781	1999	800
1976	802	1988	873	2000	711
1977	808	1989	874	2001	757
1978	794	1990	878	2002	720
1979	872	1991	898	2003	765
1980	863	1992	863	2004	728
1981	824	1993	811	2005	807
1982	850	1994	849	2006	858
1983	856	1995	769	2007	862
1984	856	1996	806	2008	884
1985	815	1997	799	2009	893
				2010*	908

Source: Adapted from NISRA figures (www.nisra.gov.uk)

*Note that 2010 births are provisional from NISRA – Statistics Press Notice – Births in Northern Ireland (2010)

Armagh City & District Council Live Births 1974 - 2010



*Includes 2010 projected birth figure

Source: Adapted from NISRA figures (www.nisra.gov.uk)

ARMAGH Available Pupils for Primary School 1985 - 2014

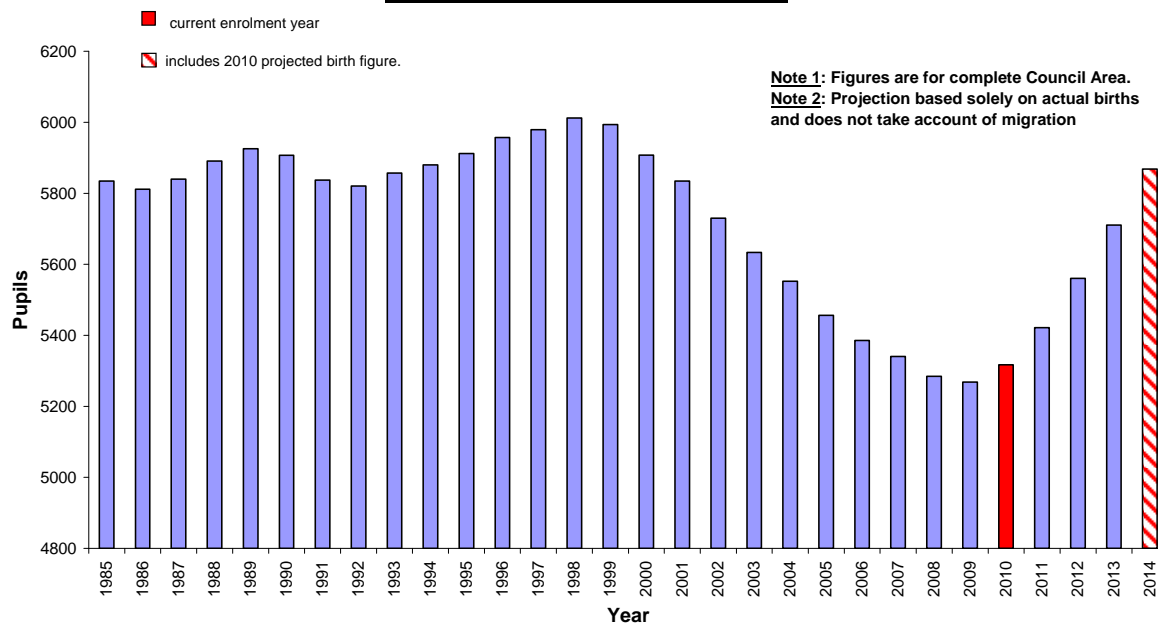
YEAR	P7	P6	P5	P4	P3	P2	P1	TOTAL
1985	860	825	805	801	833	868	844	5835
1986	825	805	801	833	868	844	837	5812
1987	805	801	833	868	844	837	853	5840
1988	801	833	868	844	837	853	856	5891
1989	833	868	844	837	853	856	836	5926
1990	868	844	837	853	856	836	815	5907
1991	844	837	853	856	836	815	798	5837

1992	837	853	856	836	815	798	827	5821
1993	853	856	836	815	798	827	874	5857
1994	856	836	815	798	827	874	876	5880
1995	836	815	798	827	874	876	888	5912
1996	815	798	827	874	876	888	881	5957
1997	798	827	874	876	888	881	837	5980
1998	827	874	876	888	881	837	830	6012
1999	874	876	888	881	837	830	809	5994
2000	876	888	881	837	830	809	788	5908
2001	888	881	837	830	809	788	803	5835
2002	881	837	830	809	788	803	784	5730
2003	837	830	809	788	803	784	784	5634
2004	830	809	788	803	784	784	756	5552
2005	809	788	803	784	784	756	734	5456
2006	788	803	784	784	756	734	739	5386
2007	803	784	784	756	734	739	743	5341
2008	784	784	756	734	739	743	747	5285
2009	784	756	734	739	743	747	768	5269
2010	756	734	739	743	747	768	833	5317
2011	734	739	743	747	768	833	860	5422
2012	739	743	747	768	833	860	873	5561
2013	743	747	768	833	860	873	889	5711
2014	747	768	833	860	873	889	901	5869

Source: Based on NISRA figures (www.nisra.gov.uk)

These figures represent the children who would be available in the designated primary class in any particular year arising from the births. These figures do not include migrants or other changes such as new housing in the area.

Armagh City & District Council Available Pupils for Primary Schools (1985 - 2014) Arising from Births

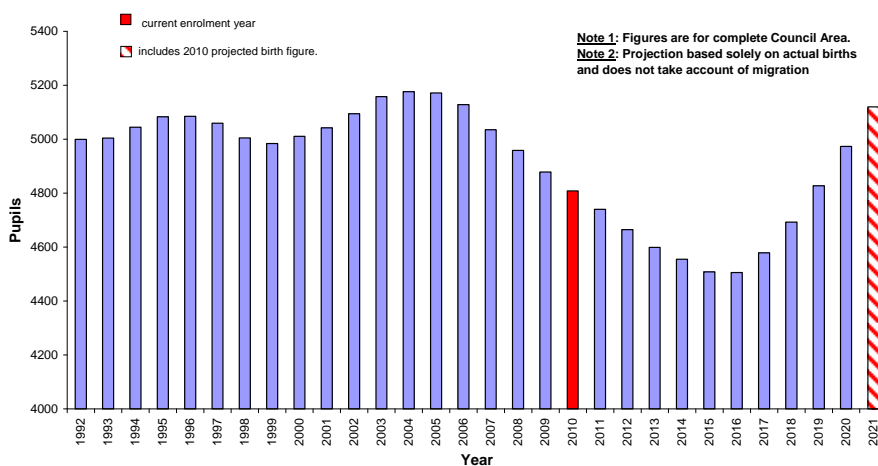


Source: Based on NISRA figures (www.nisra.gov.uk)

ARMAGH Available Pupils for Post-Primary Schools 1992 - 2021

YEAR	Year 14	Year 13	Year 12	Year 11	Year 10	Year 9	Year 8	TOTAL
1992	404	445	805	801	833	868	844	4999
1993	388	435	801	833	868	844	837	5004
1994	378	433	833	868	844	837	853	5045
1995	376	450	868	844	837	853	856	5083
1996	392	468	844	837	853	856	836	5085
1997	408	455	837	853	856	836	815	5059
1998	396	452	853	856	836	815	798	5005
1999	393	461	856	836	815	798	827	4985
2000	401	462	836	815	798	827	874	5011
2001	402	451	815	798	827	874	876	5042
2002	393	440	798	827	874	876	888	5095
2003	383	431	827	874	876	888	881	5158
2004	375	447	874	876	888	881	837	5176
2005	389	472	876	888	881	837	830	5172
2006	411	473	888	881	837	830	809	5128
2007	412	480	881	837	830	809	788	5035
2008	417	475	837	830	809	788	803	4959
2009	414	452	830	809	788	803	784	4878
2010	393	448	809	788	803	784	784	4808
2011	390	437	788	803	784	784	756	4740
2012	380	425	803	784	784	756	734	4665
2013	370	433	784	784	756	734	739	4599
2014	377	423	784	756	734	739	743	4555
2015	368	423	756	734	739	743	747	4509
2016	368	408	734	739	743	747	768	4505
2017	355	396	739	743	747	768	833	4579
2018	345	399	743	747	768	833	860	4693
2019	347	401	747	768	833	860	873	4828
2020	349	403	768	833	860	873	889	4974
2021	351	414	833	860	873	889	901	5120

Armagh City & District Council Available Pupils for Post-Primary Schools (1992 - 2021) Arising from Births



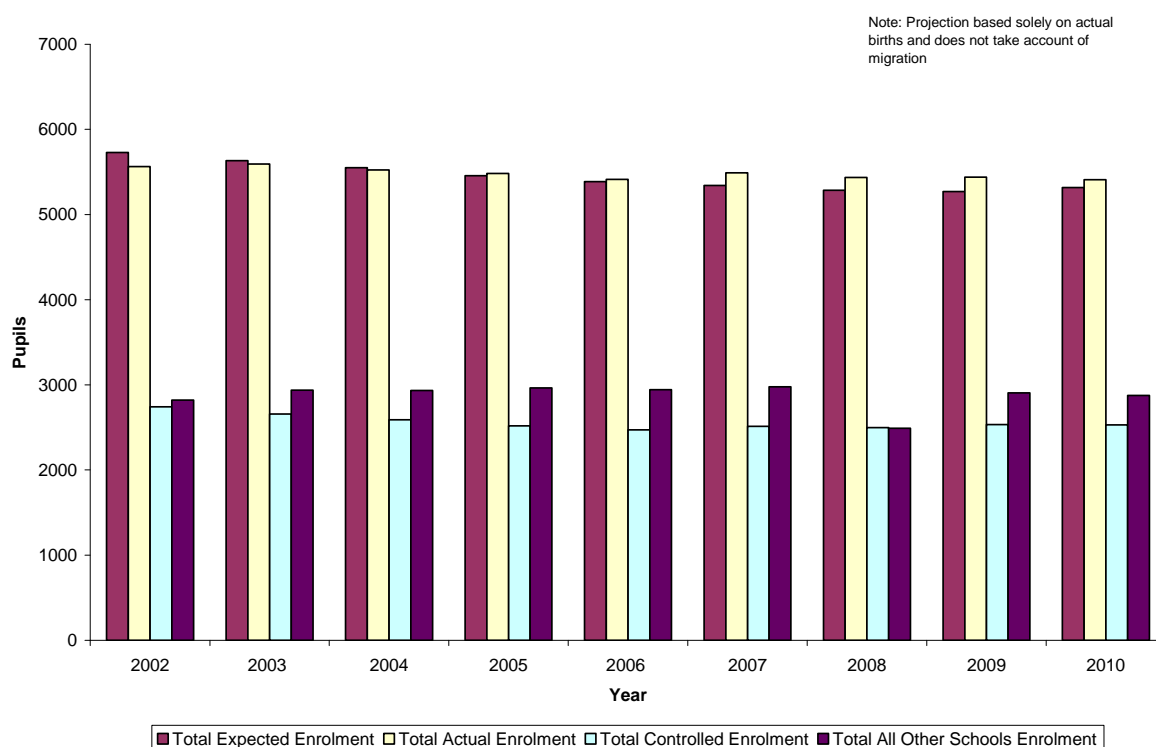
Source: Based on NISRA figures (www.nisra.gov.uk)

These figures represent the children who would be available in the designated post-primary class in any particular year arising from the births. These figures do not include migrants or other changes such as new housing in the area.

Projected enrolment based on Actual Births Vs Actual Enrolments 2002 – 2010

Armagh	2002	2003	2004	2005	2006	2007	2008	2009	2010
Total Expected Enrolment	5730	5634	5552	5456	5386	5341	5285	5269	5317
Total Actual Enrolment	5564	5594	5523	5483	5414	5491	5437	5438	5408
Total Controlled Enrolment	2743	2657	2591	2519	2472	2513	2497	2532	2531
Total All Other Schools Enrolment	2821	2937	2932	2964	2942	2978	2490	2906	2877

Projected Based on Actual Births Vs Actual Enrolment for Primary Schools in Armagh DCA



NOTE: We have not included a comparison chart for post-primary as pupils for post-primary schools come from across the district council boundaries. While there may be some transfers across council boundaries in the primary sector, these are of a more limited nature and are statistically less significant.

Pre-School Age Population Projections in Armagh from NISRA 2006-based LGD projections

Age	2006	2007	2008	2009	2010	2011	2012	2013	2014	2015	2016	2017	2018	2019	2020	2021	% Change
0	838	856	847	859	866	870	872	870	872	876	883	891	897	903	907	911	8.71%
1	824	854	870	861	872	878	882	884	882	883	888	895	901	909	915	919	11.53%
2	783	834	864	880	870	880	887	891	891	890	891	896	902	910	917	923	17.88%
3	764	793	844	873	888	878	888	895	899	899	897	899	904	910	918	924	20.94%
Total	3,209	3,337	3,425	3,473	3,496	3,506	3,529	3,540	3,544	3,548	3,559	3,581	3,604	3,632	3,657	3,677	14.58%
		3.99%	2.64%	1.40%	0.66%	0.29%	0.66%	0.31%	0.11%	0.11%	0.31%	0.62%	0.64%	0.78%	0.69%	0.55%	

Source: Adapted from NISRA figures (www.nisra.gov.uk)

The following table shows the 3-year olds who will be available for pre-school enrolment in Armagh City & District Council Area from 2007 – 2021. The figures are calculated by adding 50% of the projected 3-year olds from two subsequent years (e.g. 2007 figures are calculated by adding 50% of 2006 and 50% of 2007).

Age	2006	2007	2008	2009	2010	2011	2012	2013	2014	2015	2016	2017	2018	2019	2020	2021	% Change
3	-	779	819	859	881	883	883	892	897	899	898	898	902	907	914	921	18.30%
			5.14%	4.89%	2.56%	0.28%	0.00%	0.96%	0.62%	0.22%	-0.11%	0.00%	0.39%	0.61%	0.77%	0.77%	

Source: Adapted from NISRA figures (www.nisra.gov.uk)

Primary School Age Population Projections in Armagh from NISRA 2006-based LGD projections

Age	2006	2007	2008	2009	2010	2011	2012	2013	2014	2015	2016	2017	2018	2019	2020	2021	% Change
4	772	779	807	858	887	902	891	901	908	912	913	911	911	917	923	930	20.47%
5	777	783	789	817	869	897	913	901	910	918	922	922	920	921	927	933	20.08%
6	830	783	789	795	823	873	903	918	906	916	922	926	927	925	927	931	12.17%
7	875	836	789	794	799	828	879	907	923	911	921	928	932	932	930	931	6.40%
8	875	889	848	801	805	810	838	889	918	934	921	932	939	942	942	941	7.54%
9	818	872	886	846	797	802	806	835	886	915	931	919	929	936	940	940	14.91%
10	831	820	875	888	847	799	804	808	836	887	916	932	920	931	937	941	13.24%
Total	5,778	5,762	5,783	5,799	5,827	5,911	6,034	6,159	6,287	6,393	6,446	6,470	6,478	6,504	6,526	6,547	13.31%
		-0.28%	0.36%	0.28%	0.48%	1.44%	2.08%	2.07%	2.08%	1.69%	0.83%	0.37%	0.12%	0.40%	0.34%	0.32%	

Source: Adapted from NISRA figures (www.nisra.gov.uk)

The following table shows the primary school aged children who will be available for primary school enrolment in Armagh City & District Council area from 2007 – 2021. The figures are calculated by adding 50% of the projected children from two subsequent years (e.g. 2007 figures for 4 year olds are calculated by adding 50% of 4 year olds in 2006 and 50% of 4 year olds in 2007).

Age	2006	2007	2008	2009	2010	2011	2012	2013	2014	2015	2016	2017	2018	2019	2020	2021	% Change
4	-	776	793	833	873	895	897	896	905	910	913	912	911	914	920	927	19.47%
5	-	780	786	803	843	883	905	907	906	914	920	922	921	921	924	930	19.23%
6	-	807	786	792	809	848	888	911	912	911	919	924	927	926	926	929	15.19%
7	-	856	813	792	797	814	854	893	915	917	916	925	930	932	931	931	8.77%
8	-	882	869	825	803	808	824	864	904	926	928	927	936	941	942	942	6.75%
9	-	845	879	866	822	800	804	821	861	901	923	925	924	933	938	940	11.24%
10	-	826	848	882	868	823	802	806	822	862	902	924	926	926	934	939	13.75%
Total	-	5770	5773	5791	5813	5869	5973	6097	6223	6340	6420	6458	6474	6491	6515	6537	13.28%
			0.04%	0.32%	0.38%	0.96%	1.76%	2.08%	2.07%	1.88%	1.25%	0.60%	0.25%	0.26%	0.37%	0.33%	

Source: Adapted from NISRA figures (www.nisra.gov.uk)

Post-Primary School Age Population Projections in Armagh from NISRA 2006-based LGD projections

Age	2006	2007	2008	2009	2010	2011	2012	2013	2014	2015	2016	2017	2018	2019	2020	2021	% Change
11	859	834	823	876	890	849	801	805	809	838	889	918	935	921	931	939	9.31%
12	858	869	842	830	885	898	856	807	812	816	845	897	926	942	929	939	9.44%
13	844	860	870	844	831	886	899	857	808	813	817	846	898	927	943	930	10.19%
14	924	844	860	870	843	830	885	898	856	807	812	816	845	896	925	942	1.95%
15	910	930	848	863	874	846	833	888	901	859	810	815	819	848	900	928	1.98%
16	949	921	939	857	872	882	854	841	896	910	867	818	824	826	855	907	-4.43%
17	871	910	884	901	824	839	848	823	810	865	878	838	790	796	797	826	-5.17%
Total	6,215	6,168	6,066	6,041	6,019	6,030	5,976	5,919	5,892	5,908	5,918	5,948	6,037	6,156	6,280	6,411	3.15%
		-0.76%	-1.65%	-0.41%	-0.36%	0.18%	-0.90%	-0.95%	-0.46%	0.27%	0.17%	0.51%	1.50%	1.97%	2.01%	2.09%	

Source: Adapted from NISRA figures (www.nisra.gov.uk)

The following table shows the post-primary school aged children who will be available for post-primary school enrolment in Armagh City & District Council Area from 2007 – 2021. The figures are calculated by adding 50% of the projected children from two subsequent years (e.g. 2007 figures for 11 year olds are calculated by adding 50% of 11 year olds in 2006 and 50% of 11 year olds in 2007).

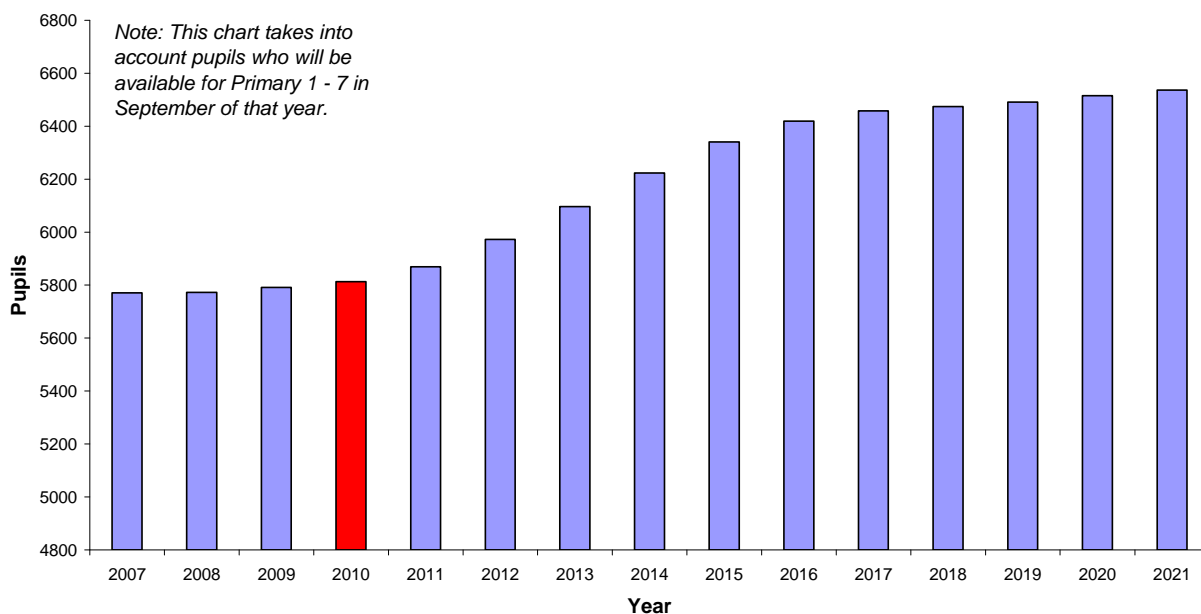
Age	2006	2007	2008	2009	2010	2011	2012	2013	2014	2015	2016	2017	2018	2019	2020	2021	% Change
11	-	847	829	850	883	870	825	803	807	824	864	904	927	928	926	935	10.45%
12	-	864	856	836	858	892	877	832	810	814	831	871	912	934	936	934	8.16%
13	-	852	865	857	838	859	893	878	833	811	815	832	872	913	935	937	9.92%
14	-	884	852	865	857	837	858	892	877	832	810	814	831	871	911	934	5.60%
15	-	920	889	856	869	860	840	861	895	880	835	813	817	834	874	914	-0.65%
16	-	935	930	898	865	877	868	848	869	903	889	843	821	825	841	881	-5.78%
17	-	891	897	893	863	832	844	836	817	838	872	858	814	793	797	812	-8.87%
Total	-	6192	6117	6054	6030	6025	6003	5948	5906	5900	5913	5933	5993	6097	6218	6346	2.49%
			-1.20%	-1.04%	-0.39%	-0.09%	-0.36%	-0.92%	-0.71%	-0.09%	0.22%	0.34%	1.00%	1.74%	1.99%	2.05%	
11 - 15	-	4366	4290	4263	4303	4316	4292	4265	4221	4160	4153	4233	4358	4479	4581	4653	6.57%
			-1.74%	-0.63%	0.94%	0.30%	-0.57%	-0.63%	-1.03%	-1.45%	-0.16%	1.91%	2.95%	2.78%	2.29%	1.57%	

Source: Adapted from NISRA figures (www.nisra.gov.uk)

PLANNING & DEVELOPMENT

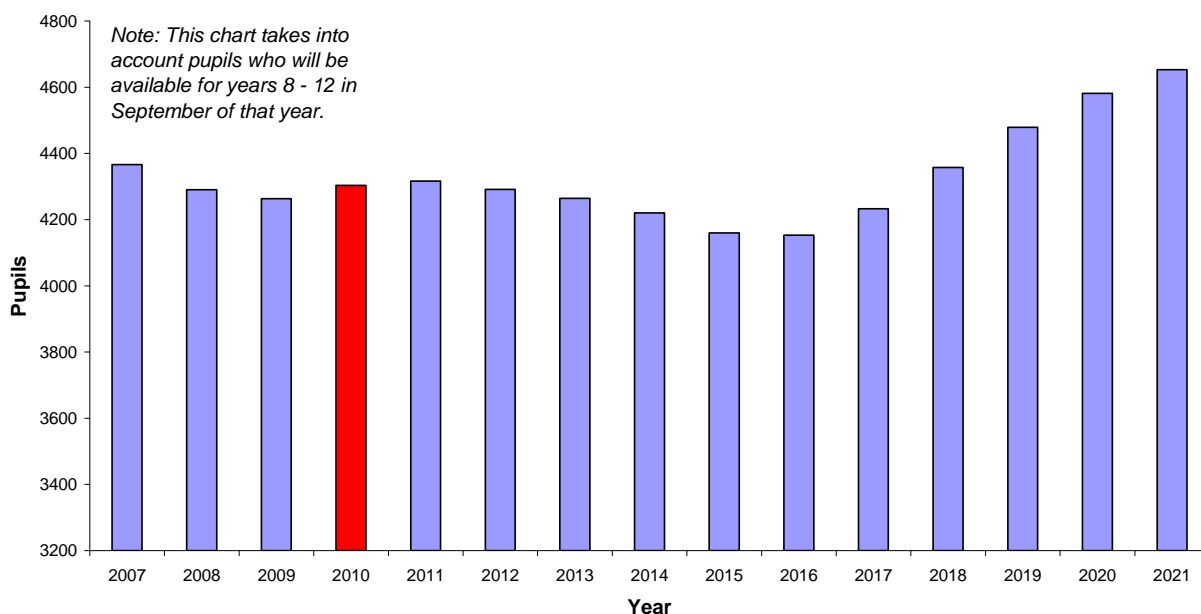
The following two charts, based on the NISRA 2006-based projections, show the pupils who will be available for enrolment in primary and post-primary schools in Armagh City & District Council Area from 2007 – 2021.

Armagh Available Pupils for Primary Schools (2007 - 2021)
based on NISRA 2006-based LGD projections



Source: Based on NISRA figures (www.nisra.gov.uk)

Armagh Available Pupils for Post-Primary Schools (2007 - 2021)
based on NISRA 2006-based LGD projections



Source: Based on NISRA figures (www.nisra.gov.uk)