

Statistical Analysis Post Primary School Sector:

Craigavon Borough Council Area

Post Primary Schools

	2002	2003	2004	2005	2006	2007	2008	2009
Controlled								
Clounagh Junior High	635	677	680	709	683	653	593	597
Craigavon Senior High Portadown Campus								
Craigavon Senior High Lurgan Campus	691	690	651	682	701	661	663	676
Killicomaine Junior High	535	514	506	500	481	450	420	442
Lurgan Junior High	690	699	672	661	675	670	673	640
Brownlow College	361	378	411	423	438	437	448	430
Lurgan College	402	408	416	418	422	430	434	432
Portadown College	794	786	782	772	743	772	803	789
Maintained								
Drumcree College	524	452	382	359	346	276	239	211
Lismore Comprehensive	1080	1087	1065	1051	1065	1068	1099	1109
St Mary's Girls' High, Lurgan	654	649	638	645	618	577	576	563
St Paul's Junior High, Lurgan	521	521	497	477	480	483	470	468
Voluntary Grammar								
St Michael's Grammar	560	570	570	573	570	570	572	567
Special Schools								
Ceara School	74	74	84	91	91	92	93	99

Demography

Births 2000 – 2008 by Wards

	2000	2001	2002	2003	2004	2005	2006	2007	2008	Average
Aghagallon	76	65	59	60	68	70	76	70	75	69
Annagh	32	30	27	45	38	32	36	52	47	38
Ballybay	34	28	17	34	34	36	38	44	51	35
Ballyoran	22	32	38	32	32	34	30	42	42	34
Bleary	50	58	56	63	51	58	48	60	48	55
Brownstown	37	45	32	32	30	46	41	37	32	37
Church	12	22	18	30	25	24	27	22	26	23
Corcrair	36	37	36	43	45	53	61	62	60	48
Court	48	40	34	35	39	45	41	53	51	43
Derrytrasna	57	72	70	83	79	76	87	83	74	76
Donaghcloney	32	33	32	25	38	40	58	45	64	41
Drumgask	67	57	62	72	73	95	94	95	88	78
Drumgor	42	51	42	33	40	46	56	52	51	46
Drumnamoe	46	35	36	32	44	26	33	29	26	34

Edenderry Craigavon	44	28	38	27	35	18	28	43	31	32
Kernan	54	93	55	62	85	85	75	88	99	77
Killycomain	22	29	26	22	33	32	22	21	28	26
Knocknashane	25	22	17	24	32	33	35	37	53	31
Magheralin	59	63	65	77	80	69	104	98	84	78
Mourneview	36	39	31	24	37	27	44	34	48	36
Parklake	28	37	32	20	39	40	51	68	74	43
Taghnevan	31	21	39	38	48	46	56	71	69	47
Tavanagh	25	38	23	26	24	33	30	32	41	30
The Birches	27	24	45	44	32	44	42	51	80	43
Waringstown	36	37	45	34	49	45	54	78	64	49
Woodville	57	63	55	53	46	40	57	49	64	54

Source: Adapted from NINIS figures (www.ninis.nisra.gov.uk)

Craigavon Borough Council Live Births: 1974 – 2009

Year	Live births CRAIGAVON
1974	1413
1975	1352
1976	1295
1977	1310
1978	1340
1979	1561
1980	1471
1981	1401
1982	1362
1983	1400
1984	1392
1985	1513

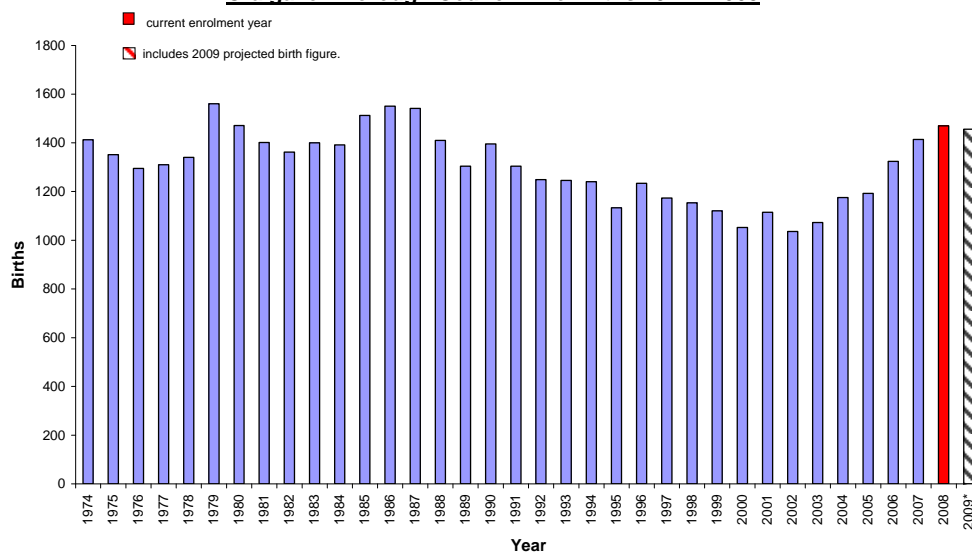
Year	Live births CRAIGAVON
1986	1551
1987	1541
1988	1410
1989	1304
1990	1396
1991	1304
1992	1249
1993	1246
1994	1240
1995	1134
1996	1234
1997	1174

Year	Live births CRAIGAVON
1998	1154
1999	1121
2000	1053
2001	1115
2002	1036
2003	1073
2004	1176
2005	1193
2006	1324
2007	1414
2008	1470
2009*	1456

Source: Adapted from NISRA figures (www.nisra.gov.uk)

*Note that 2009 births are provisional from NISRA – Statistics Press Notice – Births in Northern Ireland (2009)

Craigavon Borough Council Live Births 1974 - 2009



*Includes 2009 projected birth figure

Source: Adapted from NISRA figures (www.nisra.gov.uk)

CRAIGAVON Available Pupils for Post-Primary Schools 1992 - 2020

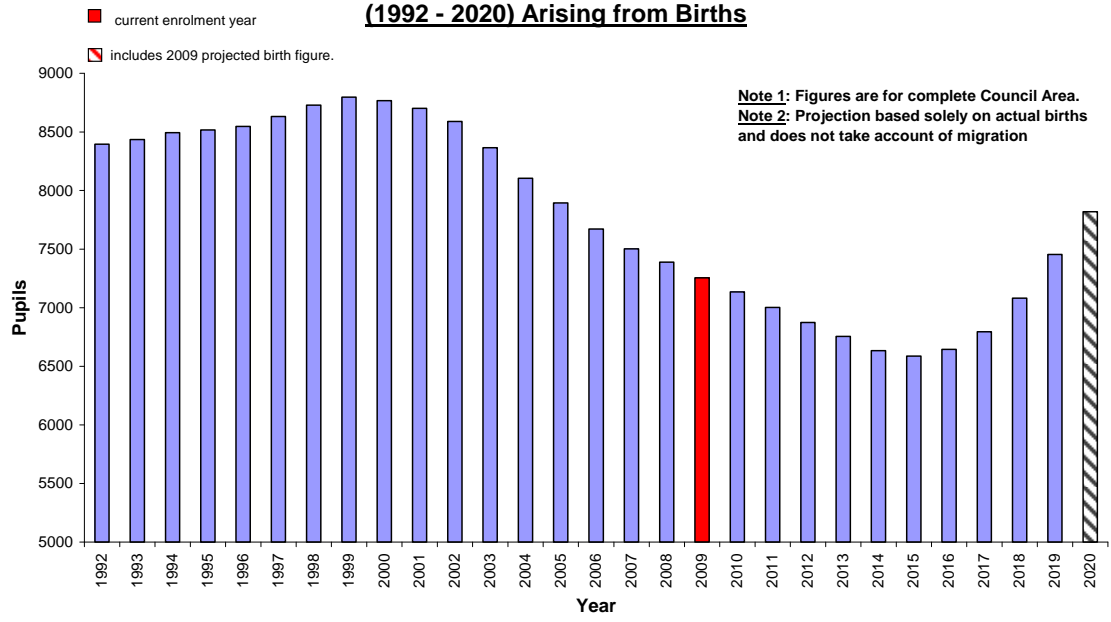
YEAR	Year 14	Year 13	Year 12	Year 11	Year 10	Year 9	Year 8	TOTAL
1992	650	715	1303	1325	1451	1516	1436	8394
1993	622	703	1325	1451	1516	1436	1382	8434
1994	612	716	1451	1516	1436	1382	1381	8493
1995	623	783	1516	1436	1382	1381	1396	8517
1996	682	819	1436	1382	1381	1396	1453	8547
1997	713	775	1382	1381	1396	1453	1532	8631
1998	675	746	1381	1396	1453	1532	1546	8728
1999	649	746	1396	1453	1532	1546	1476	8797
2000	649	754	1453	1532	1546	1476	1357	8766
2001	656	784	1532	1546	1476	1357	1350	8701
2002	683	827	1546	1476	1357	1350	1350	8588
2003	720	835	1476	1357	1350	1350	1277	8364
2004	727	797	1357	1350	1350	1277	1248	8104
2005	693	733	1350	1350	1277	1248	1243	7893
2006	638	729	1350	1277	1248	1243	1187	7671
2007	635	729	1277	1248	1243	1187	1184	7502
2008	635	689	1248	1243	1187	1184	1204	7389
2009	600	674	1243	1187	1184	1204	1164	7256
2010	586	671	1187	1184	1204	1164	1138	7134
2011	584	641	1184	1204	1164	1138	1087	7002
2012	558	639	1204	1164	1138	1087	1084	6874
2013	556	650	1164	1138	1087	1084	1076	6755
2014	566	629	1138	1087	1084	1076	1055	6633
2015	547	614	1087	1084	1076	1055	1125	6587
2016	535	587	1084	1076	1055	1125	1185	6645
2017	511	585	1076	1055	1125	1185	1259	6794
2018	509	581	1055	1125	1185	1259	1369	7081
2019	505	569	1125	1185	1259	1369	1442	7453
2020	496	607	1185	1259	1369	1442	1463	7820

Source: Based on NISRA figures (www.nisra.gov.uk)

These figures represent the children who would be available in the designated post-primary class in any particular year arising from the births. These figures do not include migrants or other changes such as new housing in the area.

Craigavon Borough Council Available Pupils for Post-Primary Schools

(1992 - 2020) Arising from Births



Source: Based on NISRA figures (www.nisra.gov.uk)

Post-Primary School Age Population Projections in Craigavon from NISRA 2006-based LGD projections

Age	2006	2007	2008	2009	2010	2011	2012	2013	2014	2015	2016	2017	2018	2019	2020	2021	% Change
11	1,227	1,254	1,277	1,217	1,200	1,166	1,196	1,162	1,118	1,234	1,327	1,408	1,444	1,414	1,456	1,496	21.92%
12	1,287	1,236	1,262	1,285	1,224	1,207	1,172	1,201	1,168	1,123	1,240	1,333	1,415	1,451	1,421	1,463	13.68%
13	1,321	1,303	1,251	1,275	1,298	1,237	1,218	1,183	1,213	1,179	1,133	1,251	1,345	1,427	1,463	1,433	8.48%
14	1,315	1,328	1,310	1,255	1,281	1,303	1,241	1,223	1,186	1,217	1,183	1,136	1,255	1,349	1,432	1,468	11.63%
15	1,352	1,332	1,343	1,323	1,268	1,293	1,316	1,252	1,234	1,197	1,227	1,193	1,146	1,266	1,361	1,444	6.80%
16	1,334	1,368	1,346	1,357	1,336	1,280	1,305	1,326	1,262	1,244	1,207	1,238	1,203	1,156	1,276	1,372	2.85%
17	1,267	1,335	1,368	1,344	1,354	1,334	1,279	1,305	1,326	1,262	1,244	1,207	1,237	1,202	1,155	1,274	0.55%
Total	9,103	9,156	9,157	9,056	8,961	8,820	8,727	8,652	8,507	8,456	8,561	8,766	9,045	9,265	9,564	9,950	9.30%
		0.58%	0.01%	-1.10%	-1.05%	-1.57%	-1.05%	-0.86%	-1.68%	-0.60%	1.24%	2.39%	3.18%	2.43%	3.23%	4.04%	

Source: Adapted from NISRA figures (www.nisra.gov.uk)

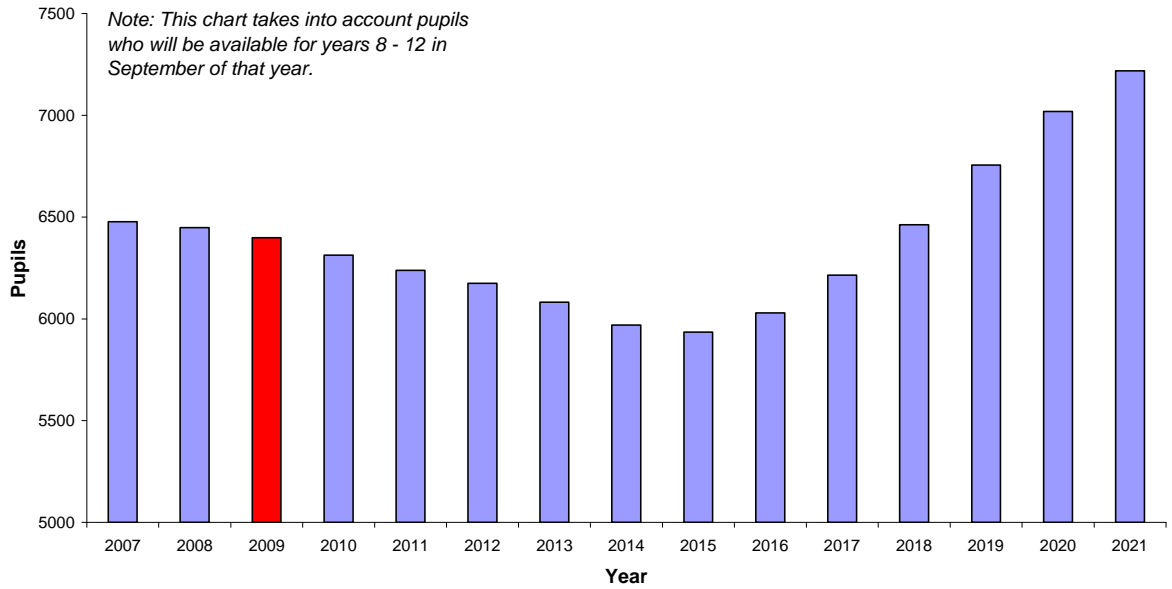
The following table shows the post-primary school aged children who will be available for post-primary school enrolment in Craigavon Borough Council Area from 2007 – 2021. The figures are calculated by adding 50% of the projected children from two subsequent years (e.g. 2007 figures for 11 year olds are calculated by adding 50% of 11 year olds in 2006 and 50% of 11 year olds in 2007).

Age	2006	2007	2008	2009	2010	2011	2012	2013	2014	2015	2016	2017	2018	2019	2020	2021	% Change
11	-	1241	1266	1247	1209	1183	1181	1179	1140	1176	1281	1368	1426	1429	1435	1476	18.98%
12	-	1262	1249	1274	1255	1216	1190	1187	1185	1146	1182	1287	1374	1433	1436	1442	14.31%
13	-	1312	1277	1263	1287	1268	1228	1201	1198	1196	1156	1192	1298	1386	1445	1448	10.37%
14	-	1322	1319	1283	1268	1292	1272	1232	1205	1202	1200	1160	1196	1302	1391	1450	9.72%
15	-	1342	1338	1333	1296	1281	1305	1284	1243	1216	1212	1210	1170	1206	1314	1403	4.51%
16	-	1351	1357	1352	1347	1308	1293	1316	1294	1253	1226	1223	1221	1180	1216	1324	-2.00%
17	-	1301	1352	1356	1349	1344	1307	1292	1316	1294	1253	1226	1222	1220	1179	1215	-6.65%
Total	-	9130	9157	9107	9009	8891	8774	8690	8580	8482	8509	8664	8906	9155	9415	9757	6.87%
			0.30%	-0.55%	-1.08%	-1.31%	-1.32%	-0.96%	-1.27%	-1.14%	0.32%	1.82%	2.79%	2.80%	2.83%	3.64%	
11 - 15	-	6478	6448	6399	6313	6239	6175	6082	5970	5935	6030	6216	6463	6756	7020	7219	11.44%
			-0.46%	-0.76%	-1.34%	-1.18%	-1.03%	-1.50%	-1.84%	-0.59%	1.61%	3.08%	3.98%	4.53%	3.91%	2.83%	

Source: Adapted from NISRA figures (www.nisra.gov.uk)

The following chart, based on the NISRA 2006-based projections, show the pupils who will be available for enrolment in post-primary schools in Craigavon Borough Council Area from 2007 – 2021.

Craigavon Available Pupils for Post-Primary Schools (2007 - 2021)
based on NISRA 2006-based LGD projections



Source: Based on NISRA figures (www.nisra.gov.uk)