

Statistical Analysis Post Primary School Sector:

Cookstown District Council Area

Post Primary Schools

	2002	2003	2004	2005	2006	2007	2008	2009
Controlled								
Cookstown High	1118	1118	1110	1008	982	980	933	931
Maintained								
Holy Trinity College	841	831	800	789	748	744	746	792

Demography

Births 2000 – 2008 by Wards

	2000	2001	2002	2003	2004	2005	2006	2007	2008	Average
Ardboe	21	28	31	24	29	33	43	40	40	32
Coagh	17	21	18	16	21	19	28	39	23	22
Dunnamore	24	35	35	31	38	43	28	29	41	34
Gortalowry	58	50	37	34	36	45	38	52	55	45
Killycolpy	33	33	35	26	32	32	41	37	42	35
Killymoon	38	28	24	21	32	27	23	30	31	28
Lissan	23	26	25	23	19	18	23	20	18	22
Moneymore	25	34	38	40	40	54	44	43	40	40
Newbuildings	28	22	23	25	30	24	33	30	36	28
Oaklands	16	32	27	28	28	25	28	27	28	27
Oldtown	22	35	37	33	61	43	36	41	42	39
Pomeroy	29	24	26	29	32	27	33	33	35	30
Sandholes	19	12	15	17	18	20	24	14	17	17
Stewartstown	18	25	25	23	25	22	23	27	27	24
The Loop	29	29	30	23	37	32	36	48	39	34
Tullagh	25	33	23	17	24	19	18	30	19	23

Source: Adapted from NINIS figures (www.ninis.nisra.gov.uk)

Cookstown District Council Area Live Births – 1974 - 2009

Year	Live births COOKSTOWN
1974	497
1975	504
1976	513
1977	528
1978	520
1979	565
1980	453
1981	525
1982	504
1983	585
1984	600
1985	471

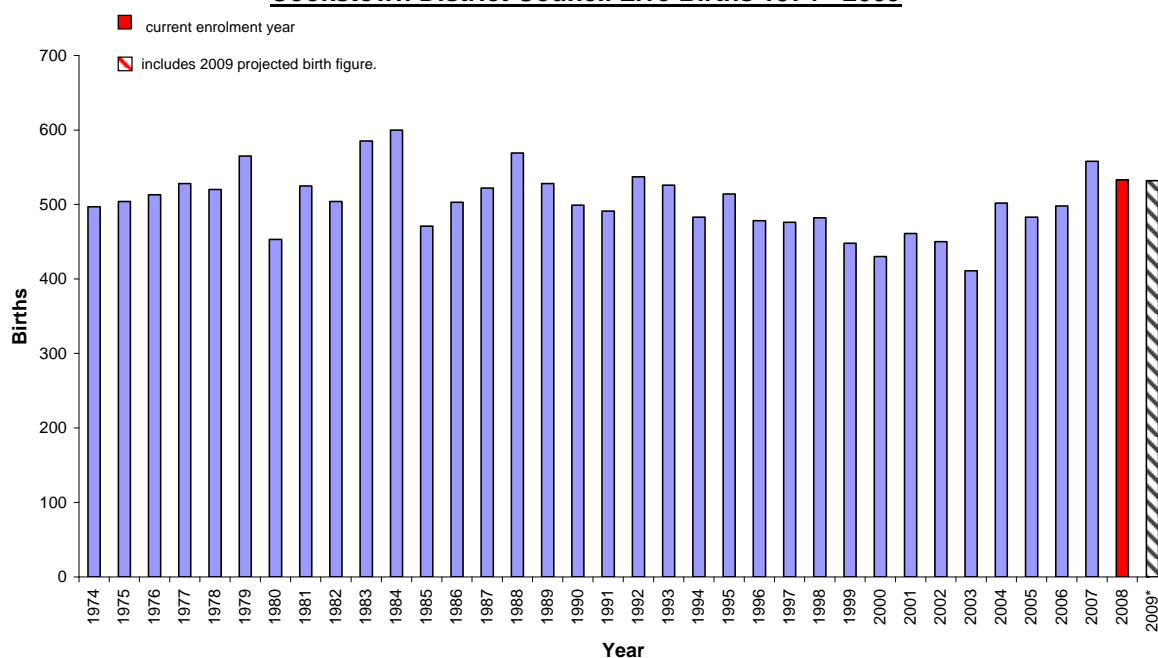
Year	Live births COOKSTOWN
1986	503
1987	522
1988	569
1989	528
1990	499
1991	491
1992	537
1993	526
1994	483
1995	514
1996	478
1997	476

Year	Live births COOKSTOWN
1998	482
1999	448
2000	430
2001	461
2002	450
2003	411
2004	502
2005	483
2006	498
2007	558
2008	533
2009*	532

Source: Adapted from NISRA figures (www.nisra.gov.uk)

*Note that 2009 births are provisional from NISRA – Statistics Press Notice – Births in Northern Ireland (2009)

Cookstown District Council Live Births 1974 - 2009



*Includes 2009 projected birth figure

Source: Adapted from NISRA figures (www.nisra.gov.uk)

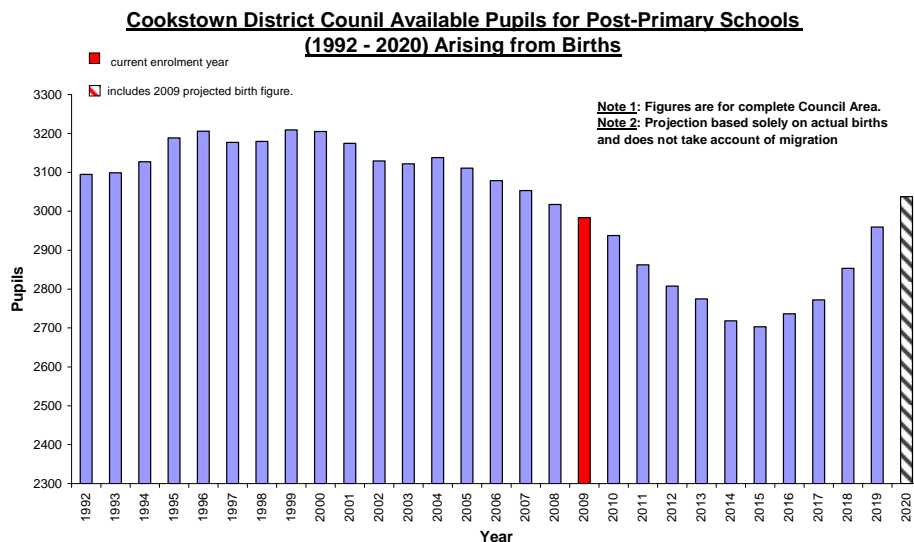
COOKSTOWN Available Pupils for Post-Primary Schools 1992 - 2020

YEAR	Year 14	Year 13	Year 12	Year 11	Year 10	Year 9	Year 8	TOTAL
1992	235	275	521	524	543	509	489	3095
1993	239	281	524	543	509	489	515	3099
1994	245	283	543	509	489	515	545	3127
1995	246	293	509	489	515	545	593	3189

1996	255	275	489	515	545	593	536	3206
1997	239	264	515	545	593	536	487	3177
1998	230	278	545	593	536	487	513	3180
1999	242	294	593	536	487	513	546	3209
2000	256	320	536	487	513	546	549	3205
2001	278	289	487	513	546	549	514	3175
2002	252	263	513	546	549	514	495	3130
2003	229	277	546	549	514	495	514	3122
2004	241	295	549	514	495	514	532	3138
2005	256	296	514	495	514	532	505	3111
2006	258	277	495	514	532	505	499	3079
2007	241	267	514	532	505	499	496	3053
2008	233	278	532	505	499	496	477	3018
2009	242	287	505	499	496	477	479	2984
2010	250	272	499	496	477	479	465	2938
2011	237	269	496	477	479	465	439	2862
2012	234	268	477	479	465	439	446	2808
2013	233	258	479	465	439	446	456	2775
2014	224	259	465	439	446	456	431	2718
2015	225	251	439	446	456	431	457	2703
2016	219	237	446	456	431	457	493	2736
2017	206	241	456	431	457	493	491	2772
2018	209	246	431	457	493	491	528	2853
2019	214	232	457	493	491	528	546	2960
2020	202	247	493	491	528	546	533	3038

Source: Based on NISRA figures (www.nisra.gov.uk)

These figures represent the children who would be available in the designated post-primary class in any particular year arising from the births. These figures do not include migrants or other changes such as new housing in the area.



Source: Based on NISRA figures (www.nisra.gov.uk)

Post-Primary School Age Population Projections in Cookstown from NISRA 2006-based LGD projections

Age	2006	2007	2008	2009	2010	2011	2012	2013	2014	2015	2016	2017	2018	2019	2020	2021	% Change
11	541	521	528	494	508	512	464	483	469	541	587	546	552	598	613	627	15.90%
12	507	545	525	530	497	511	515	468	487	472	543	591	550	555	602	616	21.50%
13	528	509	547	527	532	499	513	517	468	487	473	545	592	550	557	602	14.02%
14	574	528	509	547	526	532	498	512	516	468	487	473	544	592	550	556	-3.14%
15	590	577	530	511	549	528	533	500	513	517	469	489	474	546	594	552	-6.44%
16	582	583	570	525	505	543	522	528	495	508	512	464	484	469	540	587	0.86%
17	573	581	581	567	521	503	541	521	526	492	505	509	463	481	467	537	-6.28%
Total	3,895	3,844	3,790	3,701	3,638	3,628	3,586	3,529	3,474	3,485	3,576	3,617	3,659	3,791	3,923	4,077	4.67%
		-1.31%	-1.40%	-2.35%	-1.70%	-0.27%	-1.16%	-1.59%	-1.56%	0.32%	2.61%	1.15%	1.16%	3.61%	3.48%	3.93%	

Source: Adapted from NISRA figures (www.nisra.gov.uk)

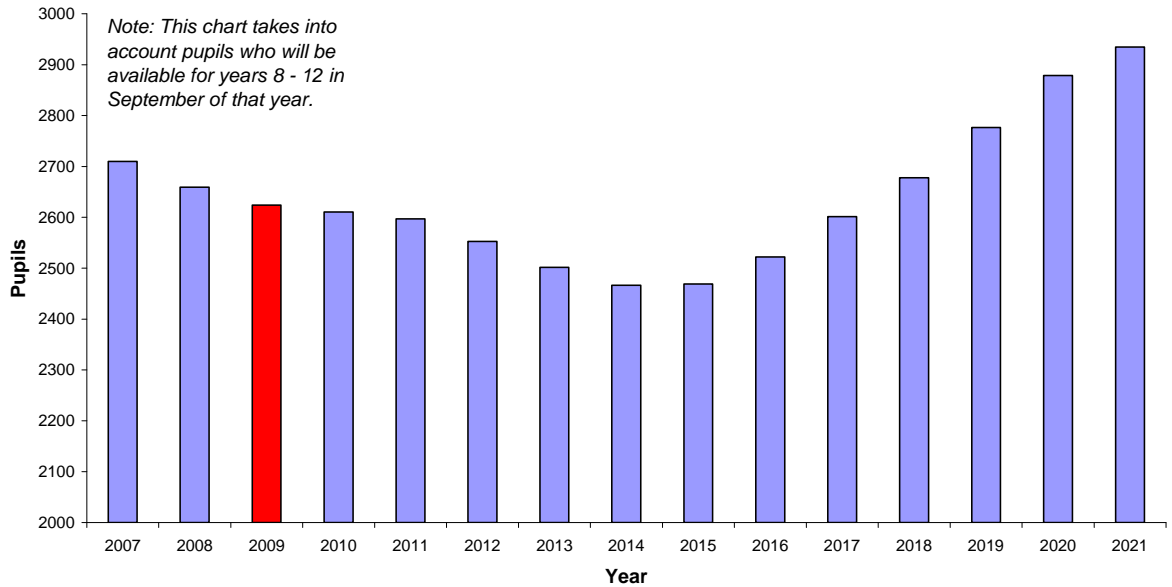
The following table shows the post-primary school aged children who will be available for post-primary school enrolment in Cookstown District Council Area from 2007 – 2021. The figures are calculated by adding 50% of the projected children from two subsequent years (e.g. 2007 figures for 11 year olds are calculated by adding 50% of 11 year olds in 2006 and 50% of 11 year olds in 2007).

Age	2006	2007	2008	2009	2010	2011	2012	2013	2014	2015	2016	2017	2018	2019	2020	2021	% Change
11	-	531	525	511	501	510	488	474	476	505	564	567	549	575	606	620	16.76%
12	-	526	535	528	514	504	513	492	478	480	508	567	571	553	579	609	15.78%
13	-	519	528	537	530	516	506	515	493	478	480	509	569	571	554	580	11.76%
14	-	551	519	528	537	529	515	505	514	492	478	480	509	568	571	553	0.36%
15	-	584	554	521	530	539	531	517	507	515	493	479	482	510	570	573	-1.80%
16	-	583	577	548	515	524	533	525	512	502	510	488	474	477	505	564	-3.26%
17	-	577	581	574	544	512	522	531	524	509	499	507	486	472	474	502	-13.00%
Total	-	3870	3817	3746	3670	3633	3607	3558	3502	3480	3531	3597	3638	3725	3857	4000	3.37%
			-1.36%	-1.87%	-2.03%	-0.99%	-0.72%	-1.37%	-1.57%	-0.63%	1.47%	1.87%	1.15%	2.39%	3.54%	3.71%	
11 - 15	-	2710	2660	2624	2611	2597	2553	2502	2467	2469	2522	2602	2678	2777	2879	2935	8.28%
			-1.86%	-1.33%	-0.51%	-0.52%	-1.71%	-2.00%	-1.40%	0.10%	2.15%	3.15%	2.94%	3.68%	3.67%	1.95%	

Source: Adapted from NISRA figures (www.nisra.gov.uk)

The following chart, based on the NISRA 2006-based projections, show the pupils who will be available for enrolment in post-primary schools in Cookstown District Council Area from 2007 – 2021.

Cookstown Available Pupils for Post-Primary Schools (2007 - 2021)
based on NISRA 2006-based LGD projections



Source: Based on NISRA figures (www.nisra.gov.uk)