

Dungannon and South Tyrone Borough Council Area

Current school provision summary including all school sectors:

Pre- School Education - Playgroups

The following table provides a summary of the funded pre-school provision at October 2009 census date in the Dungannon and South Tyrone Borough Council Area:

Sector	Number of groups	Number of funded places October 2009
Pre-school playgroups	19	435
Irish Medium	2	34
Total	21	469

Pre- School Education - Nursery

The following table provides a summary of funded nursery provision at October 2009 census date in the Dungannon and South Tyrone Borough Council Area:

Sector	Number of groups	Number of funded places October 2009
Controlled	2 Nursery Schools	78
Maintained	1 Nursery School 2 Nursery Units	52 104
Integrated	1 Nursery Unit	27
Irish Medium	0	0
Total	6	261

Primary

The following table provides an overview of the primary school provision at October 2009 census date in the Dungannon and South Tyrone Borough Council Area:

Sector	Number of Schools	Number of P1 to P7 excluding Special Units October 2009	Number of P1 to P7 including Special Units October 2009
Controlled	16	1557	1582
Maintained	25	3528	3563
Integrated	1	202	202
Irish Medium	1	131	131
Total	43	5418	5478

Post-Primary

The following table provides an overview of the post-primary school provision at October 2009 census date in the Dungannon and South Tyrone Borough Council Area:

Sector	Number of Schools	Number of pupils October 2009
Controlled	3	975
Maintained	3	1757
Integrated	1	461
Vol. Grammar	3	2593
Irish Medium	0	0
Total	10	5786

Special Schools

The following table provides an overview of the special school provision at October 2009 census date in the Dungannon and South Tyrone Borough Council Area:

Sector	Number of Schools	Number of pupils October 2009
Controlled	1	87
Total	1	87

School by school enrolment over past seven years

Total P1 – P7 Actual Enrolment ex Units at October 2009 Census Controlled Schools

DENI	School Name	Total P1-P7								
		Actual Enrolment ex Units at October Census								
Ref No		2002	2003	2004	2005	2006	2007	2008	2009	% Change
501 2659	Clogher Regional Primary	31	28	25	30	24	20	19	17	-45.16%
501 2635	Augher Central Primary	42	40	42	33	32	33	37	38	-9.52%
501 2636	Moy Regional Primary	54	50	48	42	36	34	34	39	-27.78%
501 2632	Donaghmore Primary	44	50	45	44	54	52	44	49	11.36%
501 2611	Lisfearthy Primary	53	45	52	47	54	45	52	50	-5.66%
501 2719	Newmills Primary	74	63	61	62	65	57	63	58	-21.62%
501 2538	Churchill Primary	45	54	58	53	57	54	66	66	46.67%
501 2696	Carntall Primary	78	78	83	82	86	86	87	78	0.00%
501 2657	Walker Memorial Primary	70	61	66	71	68	69	74	85	21.43%
501 6643	Richmond Primary		26	92	87	92	96	93	89	-3.26%
501 2621	Aughnacloy Regional Primary	108	109	104	97	95	103	99	105	-2.78%
501 6195	Killyman Primary	85	85	85	85	89	92	109	116	36.47%
501 6088	Fivemiletown Primary	171	169	172	165	167	160	162	170	-0.58%
501 6391	Bush Primary	169	170	166	171	169	166	172	175	3.55%
501 2720	Dungannon Primary	173	186	161	178	222	211	198	188	8.67%
501 2646	Howard Primary	241	238	225	217	201	208	217	234	-2.90%
501 2629	Tamnamore Primary	46	43	32	29	28	23			see note*
501 2451	Benburb Primary	32	34	37	35	37	22	11		*see note

*Ballygawley Primary School and Innishmogh Primary School amalgamated in January 2004 to become Richmond Primary School

*Tamnamore Primary School closed 31 August 2008 and amalgamated with Killyman Primary School

* Benburb Primary School closed 30 June 2009

Other Primary School Sector Provision

DENI		Total P1-P7								
Ref No	School Name	Actual Enrolment ex Units at October Census								
		2002	2003	2004	2005	2006	2007	2008	2009	% Change
503 1080	Clintyclay Primary	37	35	34	30	34	31	30	29	-21.62%
503 6463	St Joseph's Primary, Caledon	41	40	36	36	34	34	32	36	-12.20%
503 2736	St Mary's Primary, Fivemiletown	41	38	33	35	36	36	36	39	-4.88%
503 2306	St Malachy's Primary, Glencull	52	52	47	40	39	36	34	40	-23.08%
503 2727	St Brigid's Primary, Augher	53	45	40	45	44	47	46	42	-20.75%
503 2592	St Mary's Primary, Lisbuoy	67	67	71	72	68	62	60	49	-26.87%
503 2697	St Patrick's Primary, A'adarragh	60	65	61	61	63	61	62	59	-1.67%
503 2558	Laghey Primary	41	37	44	40	42	49	57	62	51.22%
503 2624	St Mac Carten's Convent Primary	84	79	79	83	74	65	66	66	-21.43%
503 2729	St John's Primary, Kingisland	102	101	93	87	66	66	72	67	-34.31%
503 2714	Aughamullan Primary	50	48	51	54	67	78	85	81	62.00%
503 2591	Roan Primary	64	67	69	71	74	80	82	87	35.94%
503 6363	St Mary's Primary, Aghnacloy	60	63	66	78	82	88	94	91	51.67%
503 2463	Blessed Patrick O'Loughran	95	90	87	78	83	86	91	94	-1.05%
503 2387	Derrylatinee Primary	88	91	85	86	89	95	96	96	9.09%
503 2735	St Mary's Primary, Ballygawley	94	94	87	88	94	111	108	111	18.09%
503 2698	St Brigid's Primary, Mountjoy	125	119	114	114	128	135	129	126	0.80%
504 6637	Gaelscoil Ui Neill	84	86	98	103	104	113	126	131	55.95%
503 6033	St Joseph's Primary, Galbally	164	166	176	177	180	179	170	170	3.66%
503 2715	St John's Primary, Moy	180	177	172	182	189	197	189	182	1.11%
503 2678	St Patrick's Primary, Donaghmore	177	173	164	162	175	176	183	194	9.60%
506 6554	Windmill Integrated Primary	196	191	196	199	203	207	207	202	3.06%
503 2734	St Mary's Primary, Cabra	168	163	172	176	189	212	217	220	30.95%
503 6047	St Patrick's Primary, Annaghmore	218	216	239	224	218	216	216	222	1.83%
503 2585	Edendork Primary	285	287	272	262	249	247	249	259	-9.12%
503 6590	Primate Dixon Memorial Primary	491	479	456	457	458	439	413	448	-8.76%
503 6504	St Patrick's Primary, Dungannon	506	501	510	538	577	600	631	658	30.04%

Post Primary Schools

	2002	2003	2004	2005	2006	2007	2008	2009
Controlled								
Aghnacloy College	119	145	165	177	187	197	179	176
Drumglass High	435	429	416	408	401	369	382	387
Fivemiletown College	427	414	391	386	371	371	383	412
Maintained								
St Ciaran's High	794	760	810	795	783	786	776	779
St Joseph's College, Coalisland	523	515	500	504	454	453	414	378
St Patrick's College, Dungannon	561	536	553	553	521	547	581	600
Voluntary Grammar								

St Joseph's Donaghmore	494	500	500	495	501	515	506	527
St Patrick's Academy	1690	1685	1611	1565	1543	1480	1465	1420
Dungannon Royal	651	646	654	654	647	650	656	646
Integrated								
Integrated College Dungannon	460	489	486	486	460	462	465	461
Special Schools								
Sperrinview School	70	71	69	71	78	83	84	87

Demography

Births 2000 – 2008 by Wards

	2000	2001	2002	2003	2004	2005	2006	2007	2008	Average
Altmore	28	36	31	23	31	36	40	29	39	33
Augher	19	27	27	18	36	26	24	34	25	26
Aughnacloy	19	38	25	22	22	28	34	33	41	29
Ballygawley	31	30	30	36	34	43	37	35	36	35
Ballysaggart	38	43	26	34	38	41	36	51	54	40
Benburb	26	29	34	37	33	33	48	43	52	37
Caledon	32	25	28	19	34	29	24	29	24	27
Castlecaulfield	43	27	34	25	35	38	30	32	41	34
Clogher	28	30	29	25	29	21	28	29	25	27
Coalisland North	50	48	62	51	59	50	60	65	62	56
Coalisland South	37	47	35	35	49	55	41	42	58	44
Coalisland West & Newmills	30	44	39	52	46	42	38	50	48	43
Coolhill	36	28	38	27	42	40	53	47	47	40
Donaghmore	17	38	28	25	30	32	30	34	43	31
Drumglass	20	26	20	20	28	30	29	40	38	28
Fivemiletown	21	26	29	19	21	24	29	23	25	24
Killyman	27	19	27	18	30	32	30	43	44	30
Killymeal	24	16	22	37	38	35	44	40	45	33
Moy	28	48	35	34	48	43	46	62	47	43
Moygashel	22	33	26	21	25	23	32	33	30	27
Mullaghmore	20	29	37	32	31	30	37	39	39	33
Washing Bay	33	50	45	40	44	29	31	43	47	40

Source: Adapted from NINIS figures (www.ninis.nisra.gov.uk)

**Religious Make-up of Area by Ward
2001 Census**

Wards	Catholic				Other Than Catholic			
	All Ages	11 to Under 18	4 to Under 11	Birth to Under 4	All Ages	11 to Under 18	4 to Under 11	Birth to Under 4
Altmore	79.32%	83.67%	84.27%	74.47%	20.68%	16.33%	15.73%	25.53%
Augher	55.18%	67.66%	62.77%	50.00%	44.82%	32.34%	37.23%	50.00%
Aughnacloy	26.33%	31.93%	25.22%	23.89%	73.67%	68.07%	74.78%	76.11%
Ballygawley	69.81%	71.57%	71.49%	75.95%	30.19%	28.43%	28.51%	24.05%
Ballysaggart	73.56%	82.54%	71.62%	61.54%	26.44%	17.46%	28.38%	38.46%
Benburb	49.80%	51.27%	51.47%	58.41%	50.20%	48.73%	48.53%	41.59%
Caledon	44.76%	55.24%	55.51%	52.85%	55.24%	44.76%	44.49%	47.15%
Castlecaulfield	52.55%	59.81%	60.62%	52.27%	47.45%	40.19%	39.38%	47.73%
Clogher	57.39%	67.52%	71.29%	53.23%	42.61%	32.48%	28.71%	46.77%
Coalisland North	93.84%	95.60%	96.97%	93.05%	6.16%	4.40%	3.03%	6.95%
Coalisland South	87.71%	88.99%	86.12%	85.35%	12.29%	11.01%	13.88%	14.65%
Coalisland West & Newmills	68.88%	78.21%	73.62%	57.03%	31.12%	21.79%	26.38%	42.97%
Coolhill	19.20%	17.47%	15.38%	23.94%	80.80%	82.53%	84.62%	76.06%
Donaghmore	67.65%	70.70%	70.99%	74.80%	32.35%	29.30%	29.01%	25.20%
Drumglass	80.48%	82.94%	84.62%	82.83%	19.52%	17.06%	15.38%	17.17%
Fivemiletown	18.60%	20.21%	13.90%	16.49%	81.40%	79.79%	86.10%	83.51%
Killyman	13.25%	20.49%	13.73%	10.78%	86.75%	79.51%	86.27%	89.22%
Killymeal	38.86%	47.20%	38.36%	38.64%	61.14%	52.80%	61.64%	61.36%
Moy	54.79%	55.82%	68.42%	74.00%	45.21%	44.18%	31.58%	26.00%
Moygashel	15.00%	18.42%	18.93%	23.85%	85.00%	81.58%	81.07%	76.15%
Mullaghmore	83.27%	95.41%	85.19%	81.58%	16.73%	4.59%	14.81%	18.42%
Washing Bay	92.23%	94.68%	90.85%	84.35%	7.77%	5.32%	9.15%	15.65%

Source: Adapted from NISRA figures (www.nisra.gov.uk)

Dungannon & South Tyrone Borough Council Live Births: 1974 - 2009

Year	Live births DUNGANNON
1974	940
1975	924
1976	986
1977	874
1978	932
1979	951
1980	988
1981	950
1982	928
1983	998
1984	933
1985	967

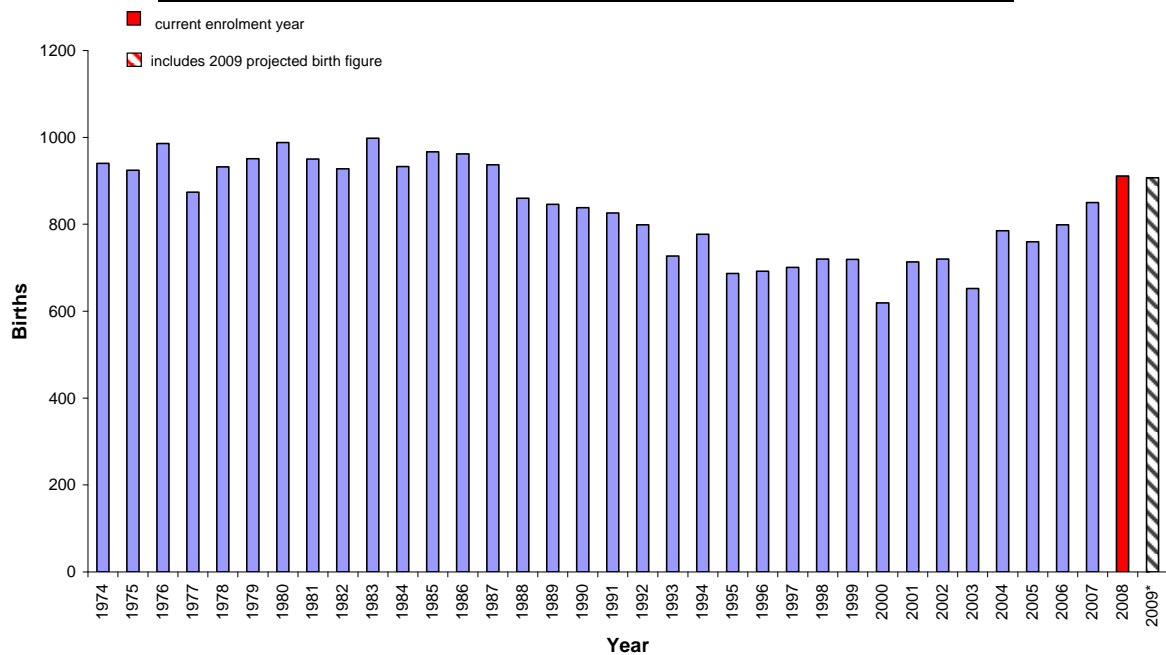
Year	Live births DUNGANNON
1986	962
1987	937
1988	860
1989	846
1990	838
1991	826
1992	799
1993	727
1994	777
1995	687
1996	692
1997	701

Year	Live births DUNGANNON
1998	720
1999	719
2000	619
2001	713
2002	720
2003	652
2004	785
2005	760
2006	799
2007	850
2008	911
2009*	907

Source: Adapted from NISRA figures (www.nisra.gov.uk)

*Note that 2009 births are provisional from NISRA – Statistics Press Notice – Births in Northern Ireland (2009)

Dungannon & South Tyrone Borough Council Live Births 1974 - 2009



*Includes 2009 projected birth figure

Source: Adapted from NISRA figures (www.nisra.gov.uk)

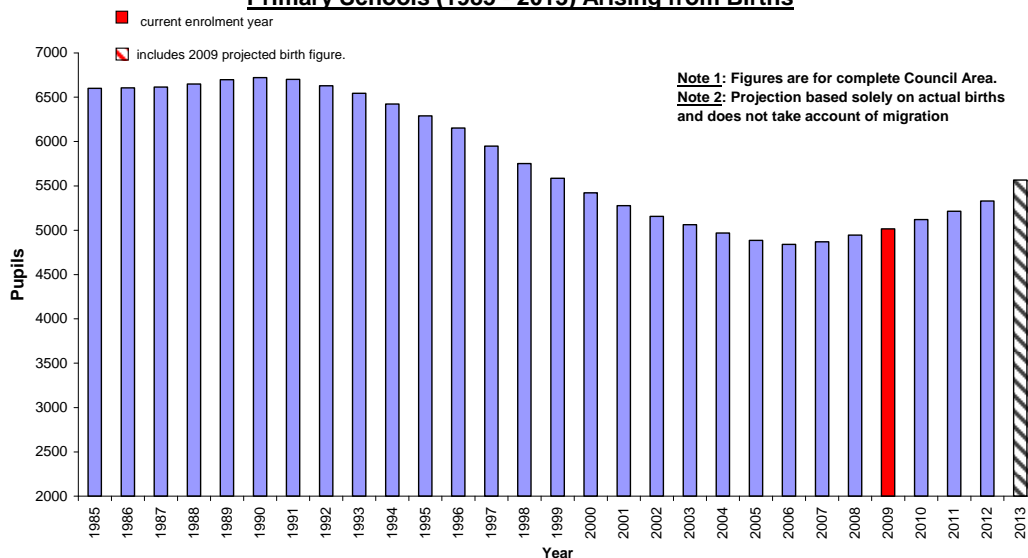
DUNGANNON Available Pupils for Primary School 1985 - 2013

YEAR	P7	P6	P5	P4	P3	P2	P1	TOTAL
1985	932	955	930	903	942	970	969	6600
1986	955	930	903	942	970	969	939	6607
1987	930	903	942	970	969	939	963	6615
1988	903	942	970	969	939	963	966	6651
1989	942	970	969	939	963	966	950	6698
1990	970	969	939	963	966	950	965	6721
1991	969	939	963	966	950	965	950	6701
1992	939	963	966	950	965	950	899	6630
1993	963	966	950	965	950	899	853	6544
1994	966	950	965	950	899	853	842	6423
1995	950	965	950	899	853	842	832	6290
1996	965	950	899	853	842	832	813	6152
1997	950	899	853	842	832	813	763	5951
1998	899	853	842	832	813	763	752	5753
1999	853	842	832	813	763	752	732	5587
2000	842	832	813	763	752	732	690	5423
2001	832	813	763	752	732	690	697	5278
2002	813	763	752	732	690	697	711	5156
2003	763	752	732	690	697	711	720	5063
2004	752	732	690	697	711	720	669	4969
2005	732	690	697	711	720	669	670	4887
2006	690	697	711	720	669	670	686	4841
2007	697	711	720	669	670	686	719	4870
2008	711	720	669	670	686	719	773	4946
2009	720	669	670	686	719	773	780	5015
2010	669	670	686	719	773	780	825	5120
2011	716	717	686	719	773	780	825	5214
2012	670	686	719	773	780	825	881	5331
2013	683	719	773	780	825	881	909	5567

Source: Based on NISRA figures (www.nisra.gov.uk)

These figures represent the children who would be available in the designated primary class in any particular year arising from the births. These figures do not include migrants or other changes such as new housing in the area.

**Dungannon & South Tyrone Borough Council Available Pupils for
Primary Schools (1985 - 2013) Arising from Births**



Source: Based on NISRA figures (www.nisra.gov.uk)

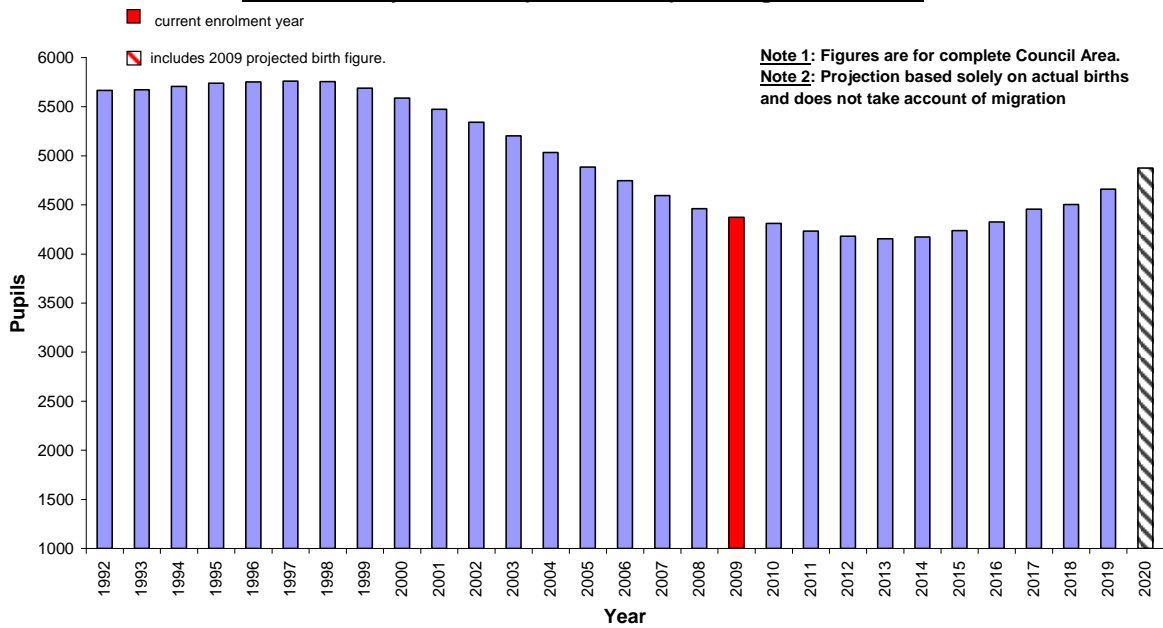
DUNGANNON Available Pupils for Post-Primary Schools 1992 - 2020								
YEAR	Year 14	Year 13	Year 12	Year 11	Year 10	Year 9	Year 8	TOTAL
1992	438	516	930	903	942	970	969	5667
1993	449	502	903	942	970	969	939	5673
1994	437	488	942	970	969	939	963	5707
1995	424	508	970	969	939	963	966	5739
1996	443	524	969	939	963	966	950	5753
1997	456	523	939	963	966	950	965	5761
1998	455	507	963	966	950	965	950	5755
1999	441	520	966	950	965	950	899	5689
2000	453	521	950	965	950	899	853	5589
2001	454	513	965	950	899	853	842	5474
2002	447	521	950	899	853	842	832	5342
2003	453	513	899	853	842	832	813	5204
2004	446	485	853	842	832	813	763	5034
2005	422	461	842	832	813	763	752	4884
2006	401	455	832	813	763	752	732	4747
2007	396	449	813	763	752	732	690	4594
2008	391	439	763	752	732	690	697	4463
2009	382	412	752	732	690	697	711	4374
2010	359	406	732	690	697	711	720	4313
2011	353	395	690	697	711	720	669	4234
2012	344	372	697	711	720	669	670	4181
2013	324	376	711	720	669	670	686	4155
2014	327	384	720	669	670	686	719	4174
2015	334	389	669	670	686	719	773	4238
2016	338	361	670	686	719	773	780	4325

2017	314	362	686	719	773	780	825	4457
2018	337	387	686	719	773	780	825	4504
2019	315	370	719	773	780	825	881	4661
2020	321	388	773	780	825	881	909	4875

Source: Based on NISRA figures (www.nisra.gov.uk)

These figures represent the children who would be available in the designated post-primary class in any particular year arising from the births. These figures do not include migrants or other changes such as new housing in the area.

Dungannon & South Tyrone Borough Council Available Pupils for Post-Primary Schools (1992 - 2020) Arising from Births



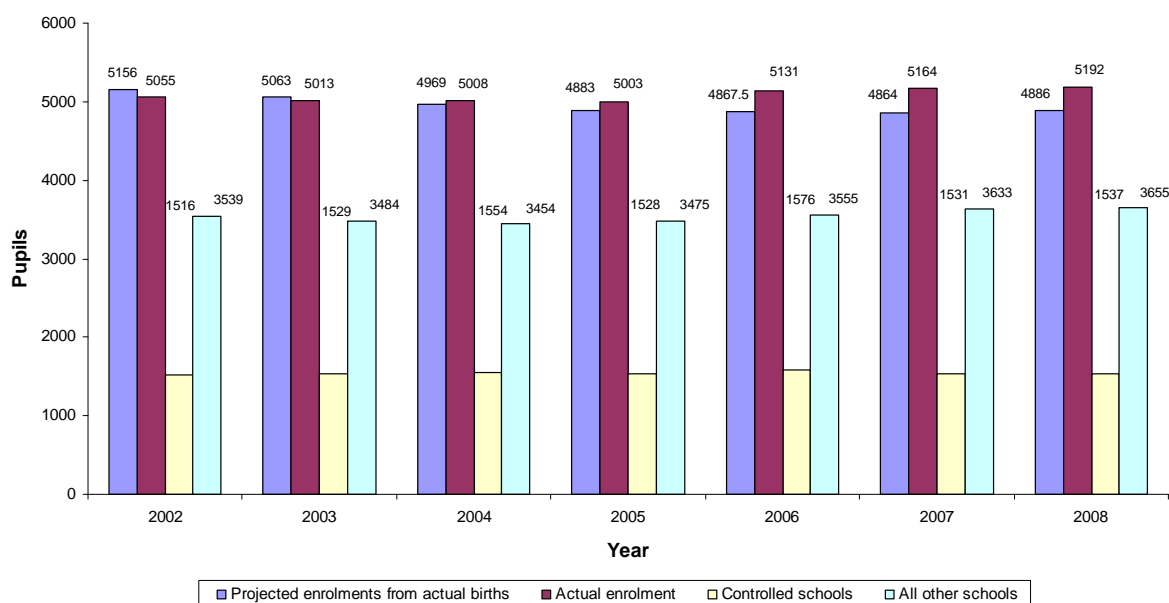
Source: Based on NISRA figures (www.nisra.gov.uk)

Projected enrolment based on actual births Vs Actual Enrolments 2002 - 2009

	2002	2003	2004	2005	2006	2007	2008	2009
Total Expected Enrolment	5156	5063	4969	4883	4868	4864	4886	5015
Total Actual Enrolment	5055	5013	5008	5003	5131	5164	5192	5418
Total Controlled Schools	1516	1529	1554	1528	1576	1531	1537	1557
Total All Other Schools	3539	3484	3454	3475	3555	3633	3655	3861

Projected Based on Actual Births Vs Actual Enrolment for Primary Schools in Dungannon DCA

Note: Projection based solely on actual births and does not take account of migration



NOTE: We have not included a comparison chart for post-primary as pupils for post-primary schools come from across the district council boundaries. While there may be some transfers across council boundaries in the primary sector, these are of a more limited nature and are statistically less significant.

Pre-School Age Population Projections in Dungannon from NISRA 2006-based LGD projections

Age	2006	2007	2008	2009	2010	2011	2012	2013	2014	2015	2016	2017	2018	2019	2020	2021	% Change
0	777	830	882	919	952	982	1,005	1,023	1,044	1,069	1,092	1,114	1,134	1,150	1,162	1,170	50.58%
1	833	803	849	902	938	971	1,000	1,023	1,041	1,063	1,087	1,110	1,132	1,153	1,169	1,181	41.78%
2	743	840	805	849	901	938	971	1,000	1,022	1,041	1,063	1,088	1,111	1,133	1,153	1,170	57.47%
3	681	752	844	809	852	906	941	974	1,003	1,027	1,045	1,066	1,091	1,115	1,136	1,157	69.90%
Total	3,034	3,225	3,380	3,479	3,643	3,797	3,917	4,020	4,110	4,200	4,287	4,378	4,468	4,551	4,620	4,678	54.19%
		6.30%	4.81%	2.93%	4.71%	4.23%	3.16%	2.63%	2.24%	2.19%	2.07%	2.12%	2.06%	1.86%	1.52%	1.26%	

Source: Adapted from NISRA figures (www.nisra.gov.uk)

The following table shows the 3-year olds who will be available for pre-school enrolment in Dungannon & South Tyrone Borough Council Area from 2007 – 2021. The figures are calculated by adding 50% of the projected 3-year olds from two subsequent years (e.g. 2007 figures are calculated by adding 50% of 2006 and 50% of 2007).

Age	2006	2007	2008	2009	2010	2011	2012	2013	2014	2015	2016	2017	2018	2019	2020	2021	% Change
3	-	804	856	901	936	967	994	1014	1034	1057	1081	1103	1124	1142	1156	1166	45.12%
			6.53%	5.20%	3.89%	3.37%	2.74%	2.06%	1.92%	2.23%	2.27%	2.08%	1.90%	1.60%	1.23%	0.87%	

Source: Adapted from NISRA figures (www.nisra.gov.uk)

Primary School Age Population Projections in Dungannon from NISRA 2006-based LGD projections

Age	2006	2007	2008	2009	2010	2011	2012	2013	2014	2015	2016	2017	2018	2019	2020	2021	% Change
4	758	691	759	851	814	858	912	947	980	1,010	1,033	1,051	1,072	1,098	1,121	1,144	50.92%
5	667	775	699	769	861	825	869	921	958	991	1,020	1,043	1,062	1,084	1,109	1,132	69.72%
6	751	683	789	712	782	874	836	881	935	970	1,005	1,034	1,057	1,075	1,097	1,123	49.53%
7	750	743	676	780	705	773	865	828	872	925	962	995	1,024	1,048	1,067	1,088	45.07%
8	736	767	756	686	791	715	783	876	839	883	936	973	1,007	1,036	1,059	1,079	46.60%
9	783	752	778	767	696	802	723	793	887	849	894	948	985	1,018	1,048	1,072	36.91%
10	750	802	766	792	780	708	814	734	804	900	861	907	960	998	1,032	1,062	41.60%
Total	5,195	5,213	5,223	5,357	5,429	5,555	5,802	5,980	6,275	6,528	6,711	6,951	7,167	7,357	7,533	7,700	48.22%
		0.35%	0.19%	2.57%	1.34%	2.32%	4.45%	3.07%	4.93%	4.03%	2.80%	3.58%	3.11%	2.65%	2.39%	2.22%	

Source: Adapted from NISRA figures (www.nisra.gov.uk)

The following table shows the primary school aged children who will be available for primary school enrolment in Dungannon & South Tyrone Borough Council Area from 2007 – 2021. The figures are calculated by adding 50% of the projected children from two subsequent years (e.g. 2007 figures for 4 year olds are calculated by adding 50% of 4 year olds in 2006 and 50% of 4 year olds in 2007).

Age	2006	2007	2008	2009	2010	2011	2012	2013	2014	2015	2016	2017	2018	2019	2020	2021	% Change
4	-	725	725	805	833	836	885	930	964	995	1022	1042	1062	1085	1110	1133	56.31%
5	-	721	737	734	815	843	847	895	940	975	1006	1032	1053	1073	1097	1121	55.41%
6	-	717	736	751	747	828	855	859	908	953	988	1020	1046	1066	1086	1110	54.81%
7	-	747	710	728	743	739	819	847	850	899	944	979	1010	1036	1058	1078	44.34%
8	-	752	762	721	739	753	749	830	858	861	910	955	990	1022	1048	1069	42.25%
9	-	768	765	773	732	749	763	758	840	868	872	921	967	1002	1033	1060	38.11%
10	-	776	784	779	786	744	761	774	769	852	881	884	934	979	1015	1047	34.92%
Total	-	5204	5218	5290	5393	5492	5679	5891	6128	6402	6620	6831	7059	7262	7445	7617	46.36%
			0.27%	1.38%	1.95%	1.84%	3.40%	3.74%	4.01%	4.47%	3.41%	3.20%	3.34%	2.88%	2.52%	2.30%	

Source: Adapted from NISRA figures (www.nisra.gov.uk)

Post-Primary School Age Population Projections in Dungannon from NISRA 2006-based LGD projections

Age	2006	2007	2008	2009	2010	2011	2012	2013	2014	2015	2016	2017	2018	2019	2020	2021	% Change
11	741	761	811	774	799	786	713	821	739	811	907	868	913	967	1,005	1,039	40.22%
12	790	748	765	815	778	801	788	716	824	741	813	911	871	916	971	1,008	27.59%
13	795	791	748	765	814	777	800	787	715	823	740	812	910	870	915	970	22.01%
14	827	809	800	756	772	821	783	807	795	722	829	746	820	916	876	922	11.49%
15	864	838	815	807	761	777	828	788	812	800	726	835	751	825	923	882	2.08%
16	850	876	846	822	813	767	784	833	794	819	805	731	841	757	830	928	9.18%
17	796	858	877	846	823	814	769	785	834	796	820	807	732	842	757	831	4.40%
Total	5,663	5,681	5,662	5,585	5,560	5,543	5,465	5,537	5,513	5,512	5,640	5,710	5,838	6,093	6,277	6,580	16.19%
		0.32%	-0.33%	-1.36%	-0.45%	-0.31%	-1.41%	1.32%	-0.43%	-0.02%	2.32%	1.24%	2.24%	4.37%	3.02%	4.83%	

Source: Adapted from NISRA figures (www.nisra.gov.uk)

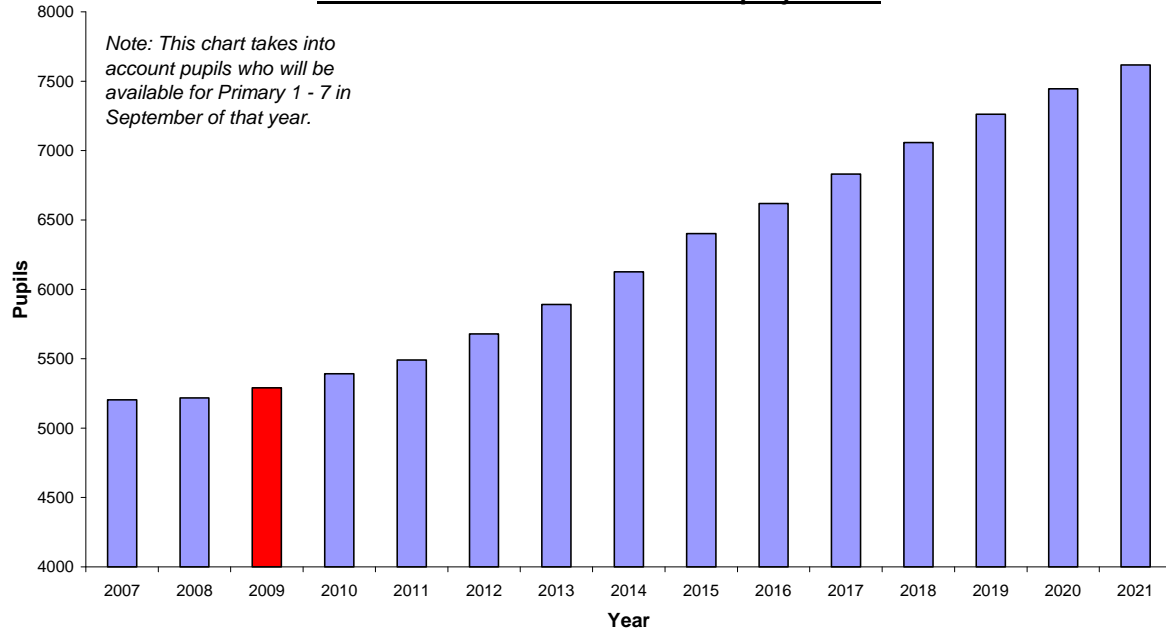
The following table shows the post-primary school aged children who will be available for post-primary school enrolment in Dungannon & South Tyrone Borough Council Area from 2007 – 2021. The figures are calculated by adding 50% of the projected children from two subsequent years (e.g. 2007 figures for 11 year olds are calculated by adding 50% of 11 year olds in 2006 and 50% of 11 year olds in 2007).

Age	2006	2007	2008	2009	2010	2011	2012	2013	2014	2015	2016	2017	2018	2019	2020	2021	% Change
11	-	751	786	793	787	793	750	767	780	775	859	888	891	940	986	1022	36.09%
12	-	769	757	790	797	790	795	752	770	783	777	862	891	894	944	990	28.67%
13	-	793	770	757	790	796	789	794	751	769	782	776	861	890	893	943	18.85%
14	-	818	805	778	764	797	802	795	801	759	776	788	783	868	896	899	9.90%
15	-	851	827	811	784	769	803	808	800	806	763	781	793	788	874	903	6.05%
16	-	863	861	834	818	790	776	809	814	807	812	768	786	799	794	879	1.85%
17	-	827	868	862	835	819	792	777	810	815	808	814	770	787	800	794	-3.99%
Total	-	5672	5672	5624	5573	5552	5504	5501	5525	5513	5576	5675	5774	5966	6185	6429	13.34%
			-0.01%	-0.85%	-0.91%	-0.38%	-0.86%	-0.05%	0.44%	-0.23%	1.15%	1.78%	1.74%	3.32%	3.68%	3.94%	
11 - 15	-	3982	3943	3928	3921	3943	3937	3916	3902	3891	3956	4094	4219	4380	4592	4756	19.42%
			-0.98%	-0.38%	-0.19%	0.57%	-0.15%	-0.55%	-0.34%	-0.28%	1.67%	3.48%	3.05%	3.82%	4.85%	3.56%	

Source: Adapted from NISRA figures (www.nisra.gov.uk)

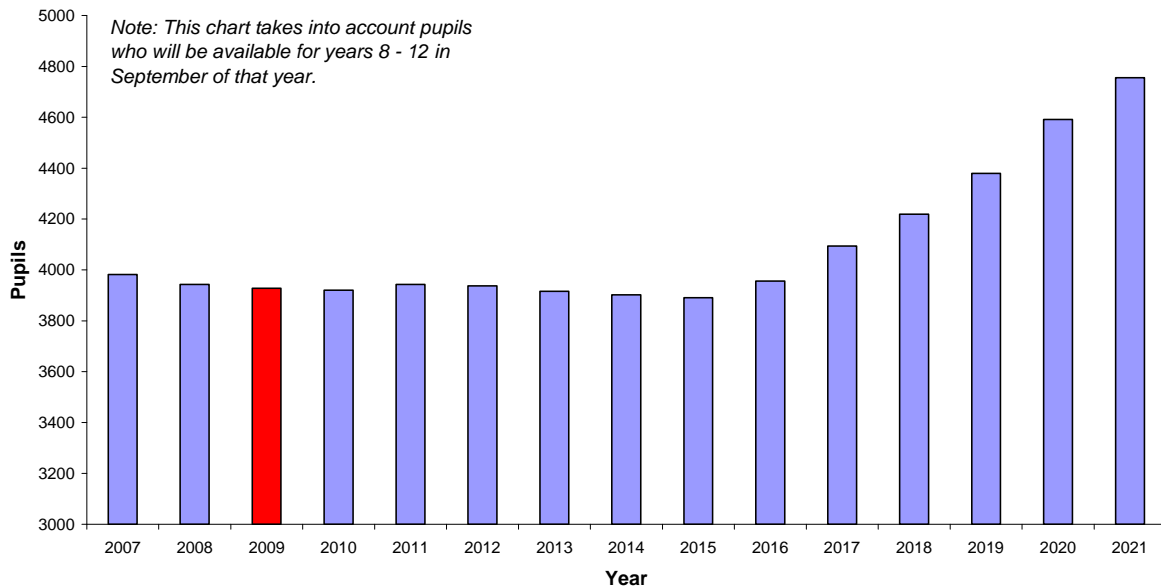
The following two charts, based on the NISRA 2006-based projections, show the pupils who will be available for enrolment in primary and post-primary schools in Dungannon & South Tyrone Borough Council Area from 2007 – 2021.

Dungannon Available Pupils for Primary Schools (2007 - 2021)
based on NISRA 2006-based LGD projections



Source: Based on NISRA figures (www.nisra.gov.uk)

Dungannon Available Pupils for Post-Primary Schools (2007 - 2021)
based on NISRA 2006-based LGD projections



Source: Based on NISRA figures (www.nisra.gov.uk)