

Cookstown District Council Area

Current school provision summary including all school sectors:

Pre- School Education - Playgroups

The following table provides a summary of the funded pre-school provision at October 2009 census date in the Cookstown District Council Area:

Sector	Number of groups	Number of funded places October 2009
Pre-school playgroups	11	237
Irish Medium	1	8
Total	12	245

Pre- School Education - Nursery

The following table provides a summary of funded nursery provision at October 2009 census date in the Cookstown District Council Area:

Sector	Number of groups	Number of funded places October 2009
Controlled	1 nursery school	52
	2 nursery units	53
Maintained	2 nursery units	79
Total	5	184

Primary

The following table provides an overview of the primary school provision at October 2009 census date in the Cookstown District Council Area:

Sector	Number of Schools	Number of P1 to P7 excluding Special Units October 2009	Number of P1 to P7 including Special Units October 2009
Controlled	10	1193	1213
Maintained	15	2112	2128
Integrated	1	126	126
Irish Medium	0	0	0
Total	26	3431	3467

Post-Primary

The following table provides an overview of the post-primary school provision at October 2009 census date in the Cookstown District Council Area:

Sector	Number of Schools	Number of pupils October 2009
Controlled	1	931
Maintained	1	792
Integrated	0	0
Vol. Grammar	0	0
Irish Medium	0	0
Total	2	1723

Special Schools

The following table provides an overview of the special school provision at October 2009 census date in the Cookstown District Council Area:

Sector	Number of Schools	Number of pupils October 2009
Controlled	0	0
Total	0	0

School by school enrolment over past seven years

Total P1 – P7 Actual Enrolment ex Units at October 2009 Census

Controlled Schools

DENI		Total P1-P7								
Ref No	School Name	Actual Enrolment ex Units at October Census								
		2002	2003	2004	2005	2006	2007	2008	2009	% Change
501 2643	Stewartstown Primary	39	42	38	35	34	35	30	29	-25.64%
501 6200	Queen Elizabeth II Primary	78	58	51	40	28	31	27	31	-60.26%
501 6141	Churchtown Primary	24	29	38	38	35	43	47	42	75.00%
501 2649	Coagh Primary	91	88	85	74	63	51	49	51	-43.96%
501 2615	Ballytrea Primary	88	91	85	91	97	96	95	91	3.41%
501 6224	Donaghey Primary	96	105	105	106	108	105	106	107	11.46%
501 3702	Woods Primary	110	91	95	101	109	117	121	136	23.64%
501 2280	Moneymore Primary	153	152	156	155	151	155	156	158	3.27%
501 6221	Orritor Primary	151	166	162	177	180	183	185	177	17.22%
501 2726	Cookstown Primary	578	524	523	484	455	400	380	371	-35.81%

Other Primary School Sector Provision

DENI		Total P1-P7								
Ref No	School Name	Actual Enrolment ex Units at October Census								
		2002	2003	2004	2005	2006	2007	2008	2009	% Change
503 6057	St Malachy's Primary, Drumullan	51	48	38	35	36	32	36	36	-29.41%
503 2693	Crievagh Primary	35	33	34	37	34	34	40	39	11.43%
503 2208	Ballylifford Primary	64	63	62	57	57	56	56	60	-6.25%
503 6120	St Patrick's Primary, Moneymore	77	88	85	83	87	92	92	87	12.99%
503 2262	Lissan Primary	91	82	93	89	95	92	96	96	5.49%
503 6108	St Joseph's Primary, Killeenan	73	78	70	68	70	78	91	97	32.88%
503 6136	Sacred Heart Primary, Rock	120	108	105	98	97	93	100	98	-18.33%
503 2713	Derrychrin Primary	117	116	114	113	105	107	99	101	-13.68%
503 2692	St Mary's Primary, Stewartstown	104	103	100	104	109	110	114	119	14.42%
506 6557	Phoenix Integrated Primary School			18	41	59	79	104	126	*see note
503 6031	St Patrick's Primary, Loup	144	136	126	116	119	120	117	135	-6.25%
503 2703	St Peters' Primary, Moortown	153	150	155	170	158	158	158	160	4.58%
503 6118	St Mary's Primary, Pomeroy	192	192	185	189	176	172	181	166	-13.54%
503 2717	St Patrick's Primary, Mullinahoe	212	202	187	181	184	172	173	170	-19.81%
503 2699	St Mary's Primary, Dunamore	162	159	164	168	163	167	172	173	6.79%
503 6567	Holy Trinity Primary	659	654	669	729	635	638	632	575	-12.75%

*Phoenix Integrated School opened in 2004

Post Primary Schools

	2002	2003	2004	2005	2006	2007	2008	2009
Controlled								
Cookstown High	1118	1118	1110	1008	982	980	933	931
Maintained								
Holy Trinity College	841	831	800	789	748	744	746	792

Demography

Births 2000 – 2008 by Wards

	2000	2001	2002	2003	2004	2005	2006	2007	2008	Average
Ardboe	21	28	31	24	29	33	43	40	40	32
Coagh	17	21	18	16	21	19	28	39	23	22
Dunnamore	24	35	35	31	38	43	28	29	41	34
Gortallowry	58	50	37	34	36	45	38	52	55	45
Killycolpy	33	33	35	26	32	32	41	37	42	35
Killymoon	38	28	24	21	32	27	23	30	31	28
Lissan	23	26	25	23	19	18	23	20	18	22
Moneymore	25	34	38	40	40	54	44	43	40	40
Newbuildings	28	22	23	25	30	24	33	30	36	28
Oaklands	16	32	27	28	28	25	28	27	28	27
Oldtown	22	35	37	33	61	43	36	41	42	39
Pomeroy	29	24	26	29	32	27	33	33	35	30
Sandholes	19	12	15	17	18	20	24	14	17	17
Stewartstown	18	25	25	23	25	22	23	27	27	24
The Loop	29	29	30	23	37	32	36	48	39	34
Tullagh	25	33	23	17	24	19	18	30	19	23

Source: Adapted from NINIS figures (www.ninis.nisra.gov.uk)

**Religious Make-up of Area by Ward
2001 Census**

Wards	Catholic				Other Than Catholic			
	All Ages	11 to Under 18	4 to Under 11	Birth to Under 4	All Ages	11 to Under 18	4 to Under 11	Birth to Under 4
Ardboe	95.32%	94.75%	97.61%	93.75%	4.68%	5.25%	2.39%	6.25%
Coagh	36.71%	42.08%	37.27%	25.00%	63.29%	57.92%	62.73%	75.00%
Dunnamore	92.09%	95.29%	92.43%	83.70%	7.91%	4.71%	7.57%	16.30%
Gortalowry	72.42%	77.49%	76.02%	79.21%	27.58%	22.51%	23.98%	20.79%
Killycolpy	84.78%	91.07%	84.94%	85.59%	15.22%	8.93%	15.06%	14.41%
Killymoon	45.90%	46.03%	55.33%	52.90%	54.10%	53.97%	44.67%	47.10%
Lissan	36.54%	35.24%	41.67%	35.11%	63.46%	64.76%	58.33%	64.89%
Moneymore	36.10%	39.47%	42.51%	54.69%	63.90%	60.53%	57.49%	45.31%
Newbuildings	31.76%	34.88%	34.29%	30.34%	68.24%	65.12%	65.71%	69.66%
Oaklands	38.70%	52.73%	39.19%	34.74%	61.30%	47.27%	60.81%	65.26%
Oldtown	19.30%	19.18%	18.14%	20.44%	80.70%	80.82%	81.86%	79.56%
Pomeroy	77.43%	75.63%	75.76%	80.49%	22.57%	24.37%	24.24%	19.51%
Sandholes	13.03%	15.12%	9.66%	14.93%	86.97%	84.88%	90.34%	85.07%
Stewartstown	35.87%	35.83%	39.06%	28.57%	64.13%	64.17%	60.94%	71.43%
The Loop	63.29%	69.93%	71.22%	60.58%	36.71%	30.07%	28.78%	39.42%
Tullagh	71.70%	75.41%	78.32%	83.02%	28.30%	24.59%	21.68%	16.98%

Source: Adapted from NISRA figures (www.nisra.gov.uk)

Cookstown District Council Area Live Births – 1974 - 2009

Year	Live births COOKSTOWN
1974	497
1975	504
1976	513
1977	528
1978	520
1979	565
1980	453
1981	525
1982	504
1983	585
1984	600
1985	471

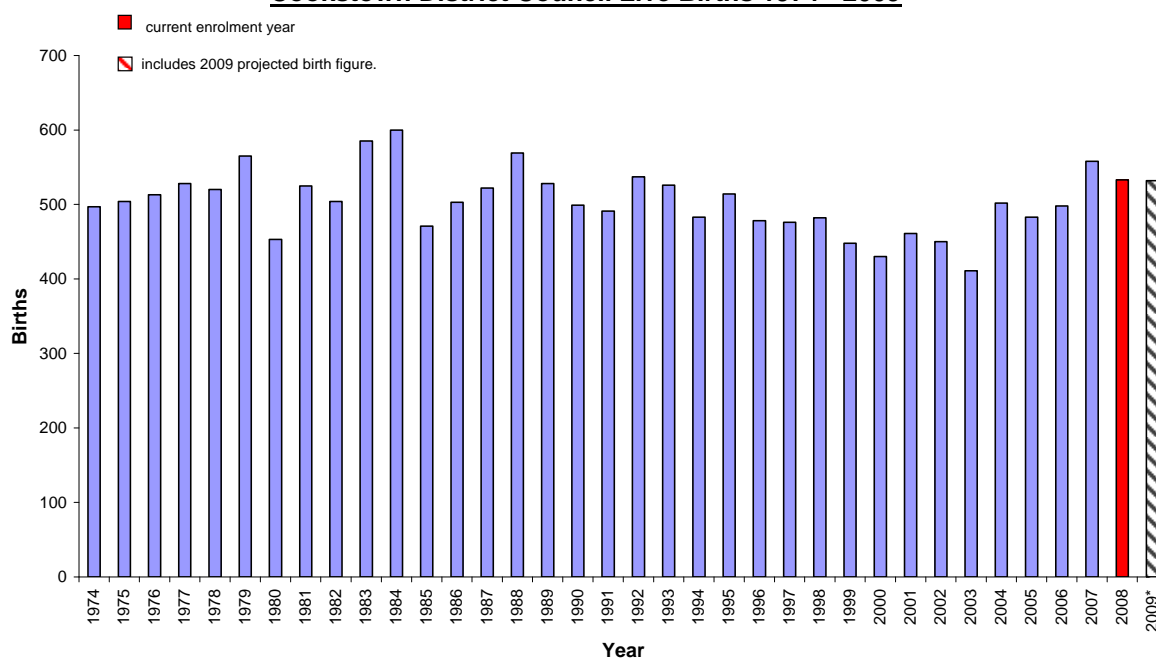
Year	Live births COOKSTOWN
1986	503
1987	522
1988	569
1989	528
1990	499
1991	491
1992	537
1993	526
1994	483
1995	514
1996	478
1997	476

Year	Live births COOKSTOWN
1998	482
1999	448
2000	430
2001	461
2002	450
2003	411
2004	502
2005	483
2006	498
2007	558
2008	533
2009*	532

Source: Adapted from NISRA figures (www.nisra.gov.uk)

*Note that 2009 births are provisional from NISRA – Statistics Press Notice – Births in Northern Ireland (2009)

Cookstown District Council Live Births 1974 - 2009



*Includes 2009 projected birth figure

Source: Adapted from NISRA figures (www.nisra.gov.uk)

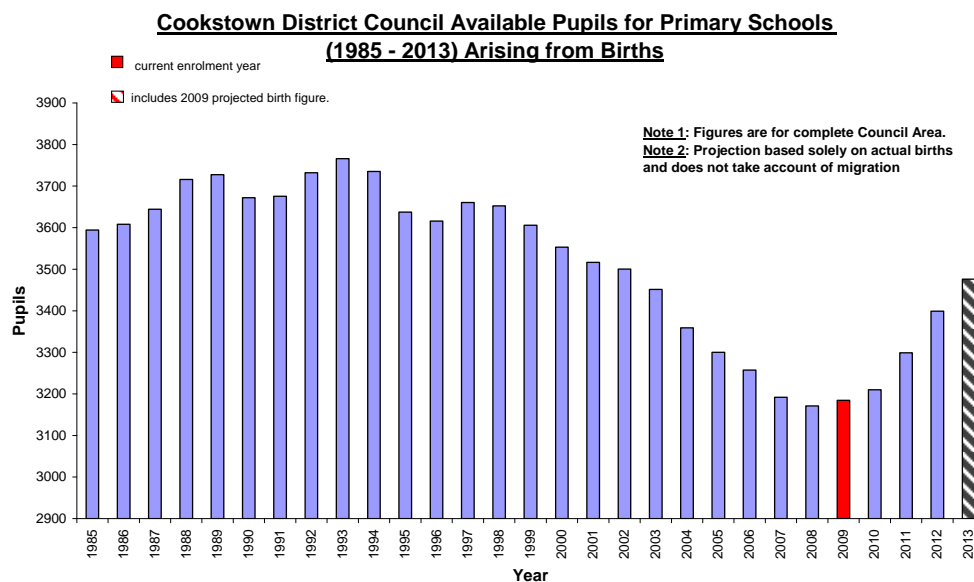
COOKSTOWN Available Pupils for Primary School 1985 - 2013

YEAR	P7	P6	P5	P4	P3	P2	P1	TOTAL
1985	501	509	521	524	543	509	489	3594
1986	509	521	524	543	509	489	515	3608
1987	521	524	543	509	489	515	545	3644
1988	524	543	509	489	515	545	593	3716

1989	543	509	489	515	545	593	536	3728
1990	509	489	515	545	593	536	487	3672
1991	489	515	545	593	536	487	513	3676
1992	515	545	593	536	487	513	546	3732
1993	545	593	536	487	513	546	549	3766
1994	593	536	487	513	546	549	514	3735
1995	536	487	513	546	549	514	495	3638
1996	487	513	546	549	514	495	514	3616
1997	513	546	549	514	495	514	532	3661
1998	546	549	514	495	514	532	505	3653
1999	549	514	495	514	532	505	499	3606
2000	514	495	514	532	505	499	496	3553
2001	495	514	532	505	499	496	477	3517
2002	514	532	505	499	496	477	479	3501
2003	532	505	499	496	477	479	465	3452
2004	505	499	496	477	479	465	439	3359
2005	499	496	477	479	465	439	446	3300
2006	496	477	479	465	439	446	456	3257
2007	477	479	465	439	446	456	431	3192
2008	479	465	439	446	456	431	457	3171
2009	465	439	446	456	431	457	493	3185
2010	439	446	456	431	457	493	491	3210
2011	446	456	431	457	493	491	528	3299
2012	456	431	457	493	491	528	546	3399
2013	431	457	493	491	528	546	533	3476

Source: Based on NISRA figures (www.nisra.gov.uk)

These figures represent the children who would be available in the designated primary class in any particular year arising from the births. These figures do not include migrants or other changes such as new housing in the area.



Source: Based on NISRA figures (www.nisra.gov.uk)

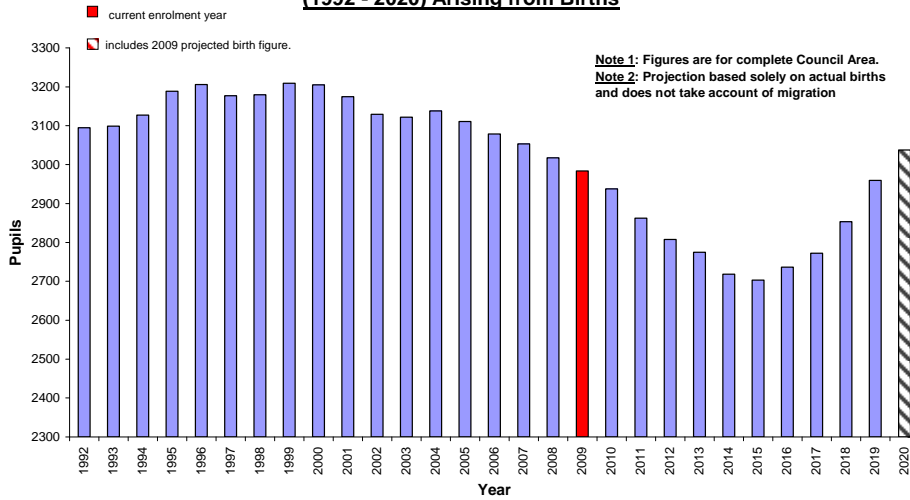
COOKSTOWN Available Pupils for Post-Primary Schools 1992 - 2020

YEAR	Year 14	Year 13	Year 12	Year 11	Year 10	Year 9	Year 8	TOTAL
1992	235	275	521	524	543	509	489	3095
1993	239	281	524	543	509	489	515	3099
1994	245	283	543	509	489	515	545	3127
1995	246	293	509	489	515	545	593	3189
1996	255	275	489	515	545	593	536	3206
1997	239	264	515	545	593	536	487	3177
1998	230	278	545	593	536	487	513	3180
1999	242	294	593	536	487	513	546	3209
2000	256	320	536	487	513	546	549	3205
2001	278	289	487	513	546	549	514	3175
2002	252	263	513	546	549	514	495	3130
2003	229	277	546	549	514	495	514	3122
2004	241	295	549	514	495	514	532	3138
2005	256	296	514	495	514	532	505	3111
2006	258	277	495	514	532	505	499	3079
2007	241	267	514	532	505	499	496	3053
2008	233	278	532	505	499	496	477	3018
2009	242	287	505	499	496	477	479	2984
2010	250	272	499	496	477	479	465	2938
2011	237	269	496	477	479	465	439	2862
2012	234	268	477	479	465	439	446	2808
2013	233	258	479	465	439	446	456	2775
2014	224	259	465	439	446	456	431	2718
2015	225	251	439	446	456	431	457	2703
2016	219	237	446	456	431	457	493	2736
2017	206	241	456	431	457	493	491	2772
2018	209	246	431	457	493	491	528	2853
2019	214	232	457	493	491	528	546	2960
2020	202	247	493	491	528	546	533	3038

Source: Based on NISRA figures (www.nisra.gov.uk)

These figures represent the children who would be available in the designated post-primary class in any particular year arising from the births. These figures do not include migrants or other changes such as new housing in the area.

**Cookstown District Council Available Pupils for Post-Primary Schools
(1992 - 2020) Arising from Births**



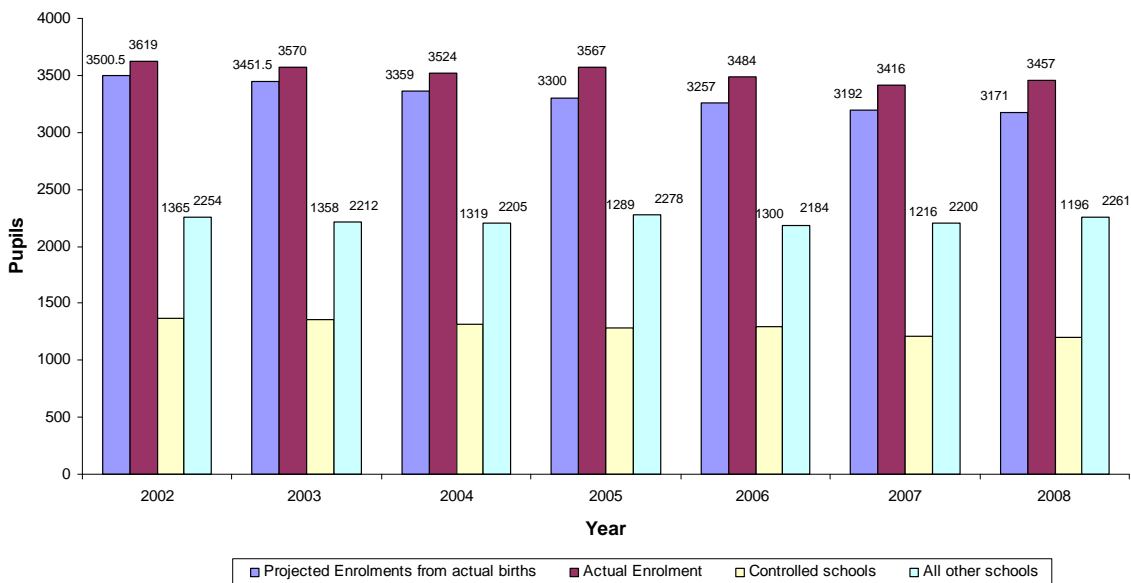
Source: Based on NISRA figures (www.nisra.gov.uk)

Projected enrolment based on Actual Births Vs Actual Enrolments 2002 - 2009

	2002	2003	2004	2005	2006	2007	2008	2009
Total Expected Enrolment	3501	3452	3359	3300	3257	3192	3171	3185
Total Actual Enrolment	3619	3570	3524	3567	3484	3416	3457	3431
Total Controlled Enrolment	1365	1358	1319	1289	1300	1216	1196	1193
Total All Other Schools Enrolment	2254	2212	2205	2278	2184	2200	2261	2238

**Projected Based on Actual Births Vs Actual Enrolment
for Primary Schools in Cookstown DCA**

Note: Projection based solely on actual births and does not take account of migration



NOTE: We have not included a comparison chart for post-primary as pupils for post-primary schools come from across the district council boundaries. While there may be some transfers across council boundaries in the primary sector, these are of a more limited nature and are statistically less significant.

Pre-School Age Population Projections in Cookstown from NISRA 2006-based LGD projections

Age	2006	2007	2008	2009	2010	2011	2012	2013	2014	2015	2016	2017	2018	2019	2020	2021	% Change
0	504	511	555	570	583	594	601	605	609	615	619	621	623	621	619	615	22.02%
1	541	505	512	556	570	583	593	601	605	609	615	619	622	622	621	618	14.23%
2	503	549	512	518	562	576	590	600	607	611	615	621	625	628	629	627	24.65%
3	443	512	559	519	525	570	585	597	608	615	619	624	629	634	636	637	43.79%
Total	1,991	2,077	2,138	2,163	2,240	2,323	2,369	2,403	2,429	2,450	2,468	2,485	2,499	2,505	2,505	2,497	25.41%
		4.32%	2.94%	1.17%	3.56%	3.71%	1.98%	1.44%	1.08%	0.86%	0.73%	0.69%	0.56%	0.24%	0.00%	-0.32%	

Source: Adapted from NISRA figures (www.nisra.gov.uk)

The following table shows the 3-year olds who will be available for pre-school enrolment in Cookstown District Council Area from 2007 – 2021. The figures are calculated by adding 50% of the projected 3-year olds from two subsequent years (e.g. 2007 figures are calculated by adding 50% of 2006 and 50% of 2007).

Age	2006	2007	2008	2009	2010	2011	2012	2013	2014	2015	2016	2017	2018	2019	2020	2021	% Change
3	-	478	536	539	522	548	578	591	603	612	617	622	627	632	635	637	33.30%
			12.15%	0.65%	-3.15%	4.89%	5.48%	2.34%	1.95%	1.49%	0.90%	0.73%	0.80%	0.80%	0.55%	0.24%	

Source: Adapted from NISRA figures (www.nisra.gov.uk)

Primary School Age Population Projections in Cookstown from NISRA 2006-based LGD projections

Age	2006	2007	2008	2009	2010	2011	2012	2013	2014	2015	2016	2017	2018	2019	2020	2021	% Change
4	463	451	519	565	526	533	577	592	605	615	623	627	631	637	641	644	39.09%
5	450	469	456	525	572	532	538	582	598	611	621	629	633	637	643	647	43.78%
6	496	451	470	457	526	572	533	539	583	598	611	622	630	634	638	644	29.84%
7	496	502	456	475	461	531	577	536	543	588	603	616	627	634	638	642	29.44%
8	490	503	509	461	480	466	537	584	543	549	594	610	623	634	641	645	31.63%
9	524	491	506	510	463	482	468	538	585	544	550	596	611	624	635	643	22.71%
10	517	524	491	505	509	461	480	466	538	585	543	549	595	609	623	634	22.63%
Total	3,436	3,391	3,407	3,498	3,537	3,577	3,710	3,837	3,995	4,090	4,145	4,249	4,350	4,409	4,459	4,499	30.94%
		-1.31%	0.47%	2.67%	1.11%	1.13%	3.72%	3.42%	4.12%	2.38%	1.34%	2.51%	2.38%	1.36%	1.13%	0.90%	

Source: Adapted from NISRA figures (www.nisra.gov.uk)

The following table shows the primary school aged children who will be available for primary school enrolment in Cookstown District Council area from 2007 – 2021. The figures are calculated by adding 50% of the projected children from two subsequent years (e.g. 2007 figures for 4 year olds are calculated by adding 50% of 4 year olds in 2006 and 50% of 4 year olds in 2007).

Age	2006	2007	2008	2009	2010	2011	2012	2013	2014	2015	2016	2017	2018	2019	2020	2021	% Change
4	-	457	485	542	546	530	555	585	599	610	619	625	629	634	639	643	40.59%
5	-	460	463	491	549	552	535	560	590	605	616	625	631	635	640	645	40.37%
6	-	474	461	464	492	549	553	536	561	591	605	617	626	632	636	641	35.37%
7	-	499	479	466	468	496	554	557	540	566	596	610	622	631	636	640	28.26%
8	-	497	506	485	471	473	502	561	564	546	572	602	617	629	638	643	29.51%
9	-	508	499	508	487	473	475	503	562	565	547	573	604	618	630	639	25.91%
10	-	521	508	498	507	485	471	473	502	562	564	546	572	602	616	629	20.75%
Total	-	3414	3399	3453	3518	3557	3644	3774	3916	4043	4118	4197	4300	4380	4434	4479	31.21%
			-0.42%	1.57%	1.88%	1.12%	2.43%	3.57%	3.78%	3.23%	1.86%	1.93%	2.44%	1.86%	1.24%	1.01%	

Source: Adapted from NISRA figures (www.nisra.gov.uk)

Post-Primary School Age Population Projections in Cookstown from NISRA 2006-based LGD projections

Age	2006	2007	2008	2009	2010	2011	2012	2013	2014	2015	2016	2017	2018	2019	2020	2021	% Change
11	541	521	528	494	508	512	464	483	469	541	587	546	552	598	613	627	15.90%
12	507	545	525	530	497	511	515	468	487	472	543	591	550	555	602	616	21.50%
13	528	509	547	527	532	499	513	517	468	487	473	545	592	550	557	602	14.02%
14	574	528	509	547	526	532	498	512	516	468	487	473	544	592	550	556	-3.14%
15	590	577	530	511	549	528	533	500	513	517	469	489	474	546	594	552	-6.44%
16	582	583	570	525	505	543	522	528	495	508	512	464	484	469	540	587	0.86%
17	573	581	581	567	521	503	541	521	526	492	505	509	463	481	467	537	-6.28%
Total	3,895	3,844	3,790	3,701	3,638	3,628	3,586	3,529	3,474	3,485	3,576	3,617	3,659	3,791	3,923	4,077	4.67%
		-1.31%	-1.40%	-2.35%	-1.70%	-0.27%	-1.16%	-1.59%	-1.56%	0.32%	2.61%	1.15%	1.16%	3.61%	3.48%	3.93%	

Source: Adapted from NISRA figures (www.nisra.gov.uk)

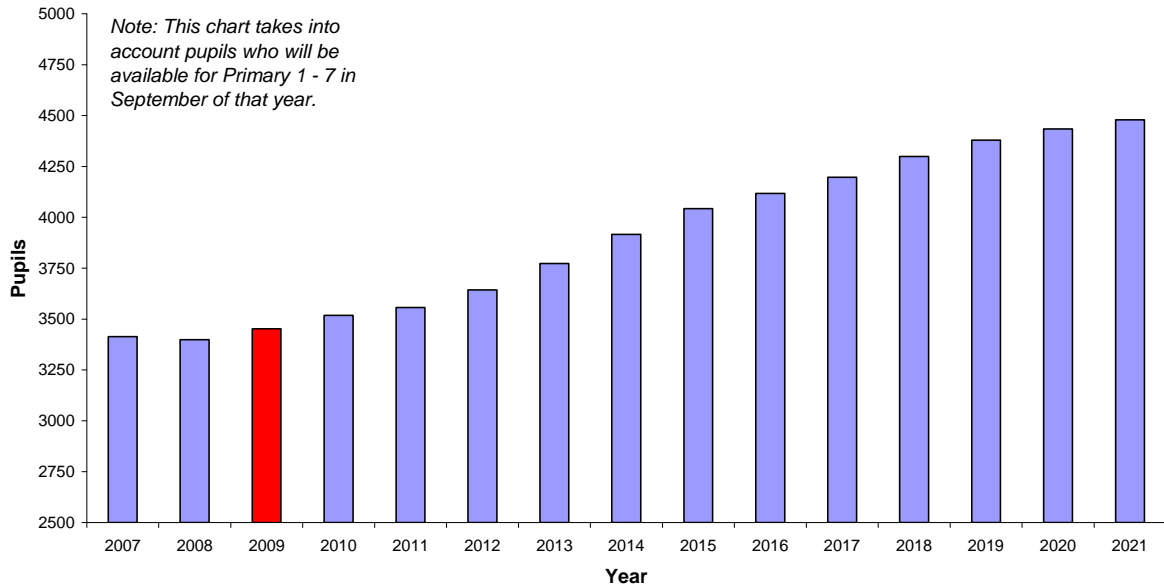
The following table shows the post-primary school aged children who will be available for post-primary school enrolment in Cookstown District Council Area from 2007 – 2021. The figures are calculated by adding 50% of the projected children from two subsequent years (e.g. 2007 figures for 11 year olds are calculated by adding 50% of 11 year olds in 2006 and 50% of 11 year olds in 2007).

Age	2006	2007	2008	2009	2010	2011	2012	2013	2014	2015	2016	2017	2018	2019	2020	2021	% Change
11	-	531	525	511	501	510	488	474	476	505	564	567	549	575	606	620	16.76%
12	-	526	535	528	514	504	513	492	478	480	508	567	571	553	579	609	15.78%
13	-	519	528	537	530	516	506	515	493	478	480	509	569	571	554	580	11.76%
14	-	551	519	528	537	529	515	505	514	492	478	480	509	568	571	553	0.36%
15	-	584	554	521	530	539	531	517	507	515	493	479	482	510	570	573	-1.80%
16	-	583	577	548	515	524	533	525	512	502	510	488	474	477	505	564	-3.26%
17	-	577	581	574	544	512	522	531	524	509	499	507	486	472	474	502	-13.00%
Total	-	3870	3817	3746	3670	3633	3607	3558	3502	3480	3531	3597	3638	3725	3857	4000	3.37%
			-1.36%	-1.87%	-2.03%	-0.99%	-0.72%	-1.37%	-1.57%	-0.63%	1.47%	1.87%	1.15%	2.39%	3.54%	3.71%	
11 - 15	-	2710	2660	2624	2611	2597	2553	2502	2467	2469	2522	2602	2678	2777	2879	2935	8.28%
			-1.86%	-1.33%	-0.51%	-0.52%	-1.71%	-2.00%	-1.40%	0.10%	2.15%	3.15%	2.94%	3.68%	3.67%	1.95%	

Source: Adapted from NISRA figures (www.nisra.gov.uk)

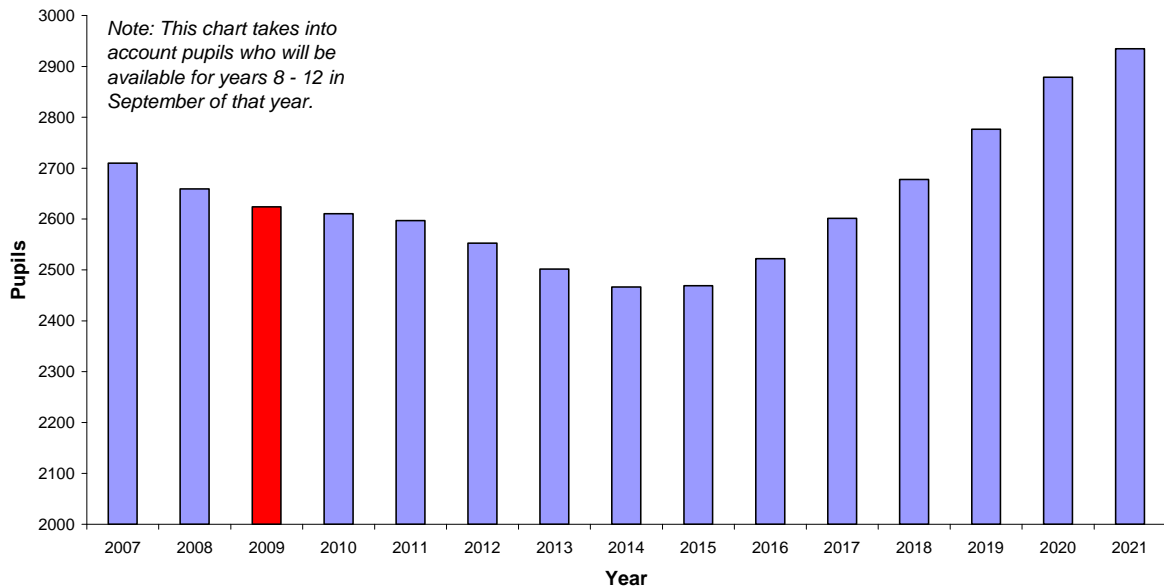
The following two charts, based on the NISRA 2006-based projections, show the pupils who will be available for enrolment in primary and post-primary schools in Cookstown District Council Area from 2007 – 2021.

Cookstown Available Pupils for Primary Schools (2007 - 2021)
based on NISRA 2006-based LGD projections



Source: Based on NISRA figures (www.nisra.gov.uk)

Cookstown Available Pupils for Post-Primary Schools (2007 - 2021)
based on NISRA 2006-based LGD projections



Source: Based on NISRA figures (www.nisra.gov.uk)